

WDM[®]

PUMPS

Frame Mounted



Close Coupled



- Flow rates up to 1600 GPM
- Flanges discharge up to 6"
- Motors up to 75 HP

- Gray cast iron impeller (Plastic in some models).
- Temperatures up to 158° F (70° C)

- Cast iron case
- Mechanical seal
- Frequency 60 Hz



Technical Book

High Pressure Line
End Suction Pumps

WDM PUMPS



www.wdmpumps.com

WDM Water Systems

WDM Pumps has expanded its brand as an international manufacturer of fluid handling pumps by consistently meeting and exceeding the needs of our customers.

Continuing a tradition of more than 60 years, WDM Pumps manufactures quality electric and engine driven pumps for diverse commercial and industrial applications. Our continued growth is based on a commitment to high standards for efficient product design, production, sales, and customer support.

Our customers rely on our world-class team of experienced WDM Pumps engineers, technicians, and product application specialists.

WDM offers pump products and related equipment for a wide variety of industries. WDM Pumps manufactured and distributed self priming, flexible coupled, close coupled, horizontal split case, vertical inline, UL/FM listed fire pumps, vertical multistage, ANSI, submersible sump and sewage and vertical turbine.

WDM Pumps plants are strategically located throughout the Americas with USA offices located in Tulsa Oklahoma.





North
Pacific
Ocean

North
Atlantic
Ocean

Other factories:

- Mexico
- Guatemala
- Panama
- Colombia
- Ecuador
- Peru
- Brasil
- Chile
- Argentina

INDEX



Pump Family		Content	Pag.
High Pressure Pumps	HE/QE/KE HE/QE/KE HE/QE/KE HE/QE/KE HE/QE/KE HE/QE/KE HE/QE/KE	Sectional	6-7
		Dimensions	8-11
		Performance Curves	12-54

HE / QE / KE / HU / QU / OU

High Pressure Line End Suction Pumps Close Coupled Frame Mounted

Features:

- Centrifugal pumps with close coupled construction
- Case and impelleres in gray cast iron, plastic impellers in some models.
- Suction: Up to 6" and discharge up to 6"
- Motor: Electrics three-phase with powers up to 2 HP up to 75HP, single-phase from 2 HP up to 10 HP.
- Pressure up to 175 mca*
- Flow Rate up to 1600 gpm**
- Mechanical seal

*mca = Meters water column

** gpm = Gallons per minute



Benefits:

- End suction pumps line
- Low and easy maintenance
- IE3 Premium efficiency motors

Nomenclature:

H E 2 100 -2 -1 CE

Motor brand

CE = Century (If it is WEG, this box is omitted)

Phases

1 = Single-phase (If is three-phase, this box is omitted)

Stages number

2 = 2 Stages (If it has one stage, this box is omitted)

Motor power multiplied x 10

100 = 10 HP

Discharge diameter in inches

2= 2"

Motor power supply

E= Electric (D = Diesel, G= Gasoline,
U = Universal coupling)

Pump family

H = High Pressure (Q= High flow K = High pressure and flow)

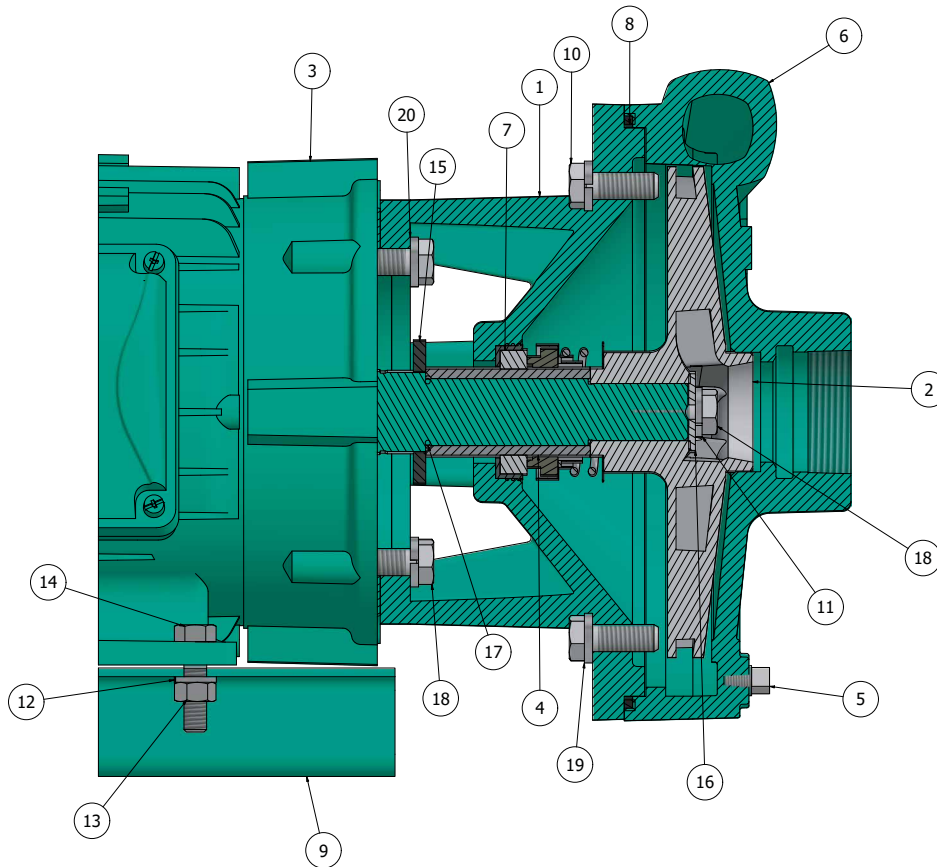
Sectional HE/QE/KE

High Pressure Line
Close Coupled
Pumps



www.wdmpumps.com

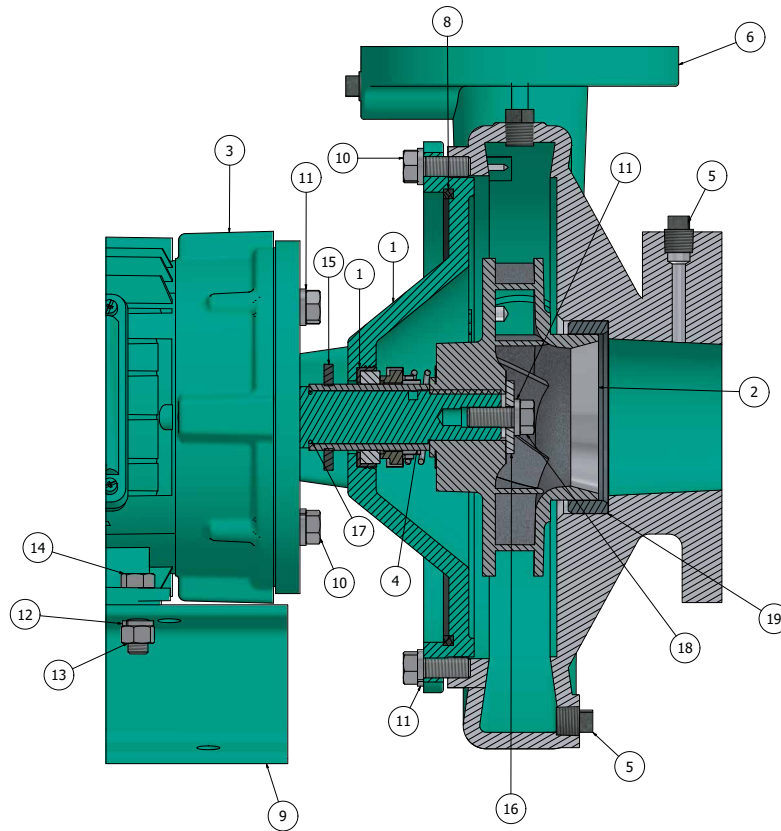
High Pressure Pumps - 2 poles



ITEM	QTY	DESCRIPTION	MATERIAL
1	1	BRACKET	CAST IRON ASTM A48
2	1	IMPELLER	CAST IRON ASTM A48
3	1	ELECTRIC MOTOR	CHECK INFO WITH SUPPLIER
4	1	SHAFT SLEEVE	STAINLESS STEEL AISI 304
5	6	PLUG	CARBON STEEL
6	1	CASING	CAST IRON ASTM A48
7	1	MECHANICAL SEAL	CARBON / CERAMIC / BUNA
8	1	SQUARE RING	BUNA
9	1	BASE	CARBON STEEL
10	13	BOLT	CARBON STEEL

ITEM	QTY	DESCRIPTION	MATERIAL
11	13	LOCK WASHER	STAINLESS STEEL AISI 304
12	4	LOCK WASHER	CARBON STEEL
13	4	NUT	CARBON STEEL
14	4	BOLT	CARBON STEEL
15	1	WASHER	BUNA
16	1	WASHER IMPELLER	STAINLESS STEEL AISI 304
17	1	O-RING	BUNA
18	1	BOLT	STAINLESS STEEL AISI 304
19	4	LOCK WASHER	CARBON STEEL
20	4	LOCK WASHER	CARBON STEEL

High Pressure Pumps - 2 poles and 4 poles



ITEM	QTY	DESCRIPTION	MATERIAL
1	1	BRACKET	CAST IRON ASTM A48
2	1	IMPELLER	CAST IRON ASTM A48
3	1	ELECTRIC MOTOR	CHECK INFO WITH SUPPLIER
4	1	SHAFT SLEEVE	STAINLESS STEEL AISI 304
5	6	PLUG	CARBON STEEL
6	1	CASING	CAST IRON ASTM A48
7	1	MECHANIC SEAL	CARBON / CERAMIC / BUNA
8	1	SQUARE RING	BUNA
9	1	BASE	CARBON STEEL
10	13	BOLT	CARBON STEEL
11	13	LOCK WASHER	STAINLESS STEEL AISI 304

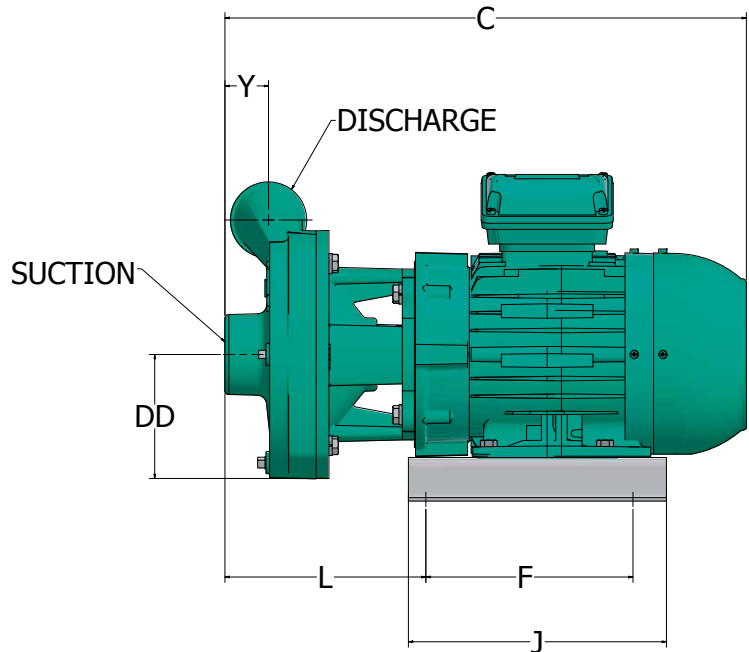
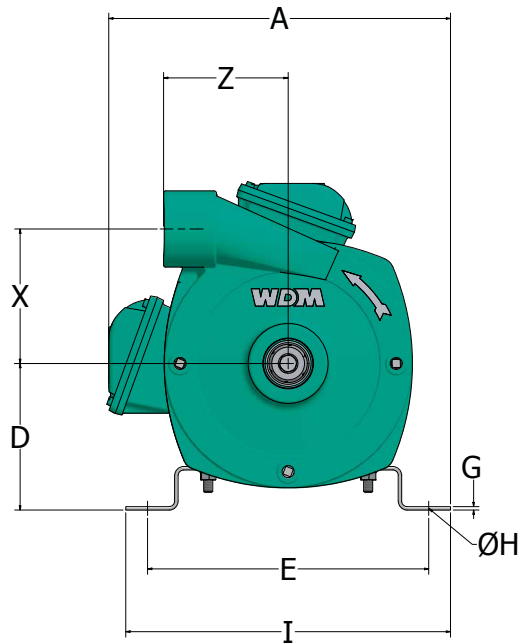
ITEM	QTY	DESCRIPTION	MATERIAL
12	4	LOCK WASHER	CARBON STEEL
13	4	NUT	CARBON STEEL
14	4	BOLT	CARBON STEEL
15	1	WASHER	BUNA
16	1	WASHER	STAINLESS STEEL AISI 304
17	1	O-RING	BUNA
18	1	BOLT	STAINLESS STEEL AISI 304
19	1	WEAR RING	CAST IRON ASTM A48
19	4	LOCK WASHER	CARBON STEEL
20		LOCK WASHER	CARBON STEEL

Dimensions High Pressure Line

QE - HE - KE Pumps
Close Coupled



www.wdmpumps.com



QE - Dimensions (Inches)

Model	Ref.	A	C	D	DD	E	F	G	H	I	L	J	X	Y	Z	Frame	Suc	Dis
QE 1.5 30	1E0510	11,757	17,93	5,04	4,28	9,67	7,13	0,13	0,38	11,17	6,91	8,88	4,63	1,50	4,28	143JM	1.5" NPT	1.5" NPT
QE 1.5 50	1E0580	13,76	19,67	6,25	4,28	10,99	7,00	0,13	0,44	12,49	7,42	12,25	4,63	1,50	4,28	182JM	1.5" NPT	1.5" NPT
QE 2 30	1E0583	11,27	18,33	5,04	4,90	9,67	7,13	0,13	0,38	11,17	8,49	8,88	5,56	2,25	2,25	143JM	2" NPT	2" NPT
QE 2 50	1E0515	13,76	20,07	6,25	4,90	10,99	7,00	0,13	0,44	12,49	7,82	12,25	5,56	2,25	2,25	182JM	2" NPT	2" NPT
QE 2 75	1E0518P	15,39	23,54	6,95	5,43	11,99	7,00	0,13	0,44	13,49	11,29	12,25	6,38	2,81	2,50	215JM	2" NPT	2" NPT
QE 2 100	1E0584	15,39	23,54	6,95	5,43	11,99	7,00	0,13	0,44	13,49	11,29	12,25	6,38	2,81	2,50	215JM	2" NPT	2" NPT
QE 2 150	1E0585P	18,22	28,04	8,50	5,43	13,88	8,94	0,25	0,44	15,88	13,94	16,00	6,38	2,81	2,50	254JM	2" NPT	2" NPT
QE 3 50	1E0586	13,76	20,95	6,25	5,43	10,99	7,00	0,13	0,44	12,49	10,92	12,25	6,38	3,04	3,75	184JM	3" NPT	3" NPT
QE 3 50-1 TC	1E0679TC	14,70	23,85	6,23	5,43	10,99	7,00	0,13	0,44	12,49	9,56	12,25	6,38	3,04	3,75	184JM	3" NPT	3" NPT
QE 3 75	1E0519P	15,39	23,74	7,00	5,43	11,99	7,00	0,13	0,44	13,49	10,75	12,25	6,38	3,04	3,75	213JM	3" NPT	3" NPT
QE 3 100	1E0520	15,39	23,74	7,00	5,43	11,99	7,00	0,13	0,44	13,49	10,75	12,25	6,38	3,04	3,75	213JM	3" NPT	3" NPT
QE 3 150	1E0521P	18,24	28,24	8,50	5,43	13,88	8,94	0,25	0,44	15,88	11,74	16,00	6,38	3,04	3,75	254JM	3" NPT	3" NPT



Dimensions High Pressure Line

HE - KE Pumps
Close Coupled

www.wdmpumps.com

HE - Dimensions (inches)

Model	Ref.	A	C	D	DD	E	F	G	H	I	L	J	X	Y	Z	Frame	Suc	Dis
HE 1.5 20-1	1E0506	8,54	15,72	5,13	4,28	5,00	3,00	0,13	0,44	7,12	5,51	6,79	4,63	1,50	4,28	56J	1.5" NPT	1.5" NPT
HE 1.5 20	1E0508	11,78	16,95	5,04	4,28	9,67	7,13	0,13	0,44	11,17	6,90	8,88	4,63	1,50	4,28	145JM	1.5" NPT	1.5" NPT
HE 1.5 30-1	1E0190	11,78	16,95	5,04	4,28	9,67	7,13	0,13	0,44	11,17	6,90	8,88	4,63	1,50	4,28	145JM	1.5" NPT	1.5" NPT
HE 1.5 30	1E0509	11,78	16,95	5,04	4,28	9,67	7,13	0,13	0,44	11,17	6,90	8,88	4,63	1,50	4,28	145JM	1.5" NPT	1.5" NPT
HE 1.5 50-1	1E0415	14,67	23,21	6,23	5,16	10,99	7,00	0,13	0,44	12,49	8,92	12,25	5,13	2,92	5,00	184JM	1.5" NPT	1.5" NPT
HE 1.5 50	1E0511	14,67	23,21	6,23	5,16	10,99	7,00	0,13	0,44	12,49	8,92	12,25	5,13	2,92	5,00	184JM	1.5" NPT	1.5" NPT
HE 1.5 75	1E0514P	15,39	21,85	7,00	5,16	11,99	7,00	0,13	0,44	13,49	8,83	12,25	5,13	2,92	5,00	213JM	1.5" NPT	1.5" NPT
HE 1.5 100	1E0390	15,39	23,10	7,00	5,16	11,99	7,00	0,13	0,44	13,49	8,62	12,25	5,13	2,92	5,00	215JM	1.5" NPT	1.5" NPT

HE - Dimensions (inches)

Model	Ref.	A	C	D	DD	E	F	G	H	I	L	J	X	Y	Z	Frame	Suc	Dis
HE 2 30-1	1E0218	11,06	19,94	5,25	4,90	8,99	7,00	0,13	0,44	10,49	10,32	12,25	5,56	2,25	2,25	145JM	2" NPT	2" NPT
HE 2 30	1E0581	11,75	18,33	5,00	4,90	9,66	7,13	0,13	0,44	11,16	8,55	8,88	5,56	2,27	2,25	145JM	2" NPT	2" NPT
"HE 2 50-1	1E0529	11,06	19,94	5,25	4,90	8,99	7,00	0,13	0,44	10,49	10,32	12,25	5,56	2,25	2,25	145JM	2" NPT	2" NPT
HE 2 50	1E0528	13,76	20,07	6,25	4,90	10,99	7,00	0,13	0,44	12,49	7,80	12,25	5,56	2,26	2,25	182JM	2" NPT	2" NPT
HE 2 75	1E0531P	15,39	23,75	7,00	5,43	11,99	7,00	0,13	0,44	13,49	10,76	12,25	6,38	2,81	2,50	213JM	2" NPT	2" NPT
HE 2 100	1E0582	15,39	23,75	7,00	5,43	11,99	7,00	0,13	0,44	13,49	10,76	12,25	6,38	2,81	2,50	215JM	2" NPT	2" NPT
HE 2 100-2	1E0546	15,39	23,75	7,00	5,43	11,99	7,00	0,13	0,44	13,49	10,76	12,25	6,38	2,81	2,50	215JM	2" NPT	2" NPT
HE 2 150-2	1E0547P	15,39	23,75	7,00	5,43	11,99	7,00	0,13	0,44	13,49	10,76	12,25	6,38	2,81	2,50	215JM	2" NPT	2" NPT

HE 3 75	1E0065P	15,39	23,74	7,00	5,43	11,99	7,00	0,12	0,44	13,49	10,76	12,25	6,38	3,04	3,75	215JM	3" NPT	3" NPT
HE 3 100	1E0532	15,39	23,74	7,00	5,43	11,99	7,00	0,12	0,44	13,49	10,76	12,25	6,38	3,04	3,75	215JM	3" NPT	3" NPT
HE 3 200-2	1E0567	18,22	31,14	8,50	6,17	13,88	8,94	0,25	0,44	15,88	14,64	16,00	9,31	5,56	0,00	254JM	3" NPT	3" NPT
HE 3 250-2	1E0568P	19,34	34,33	9,34	6,17	14,86	8,94	0,25	0,44	16,86	17,50	16,00	9,31	5,56	0,00	284JM	3" NPT	3" NPT

KE - Dimensions (inches)

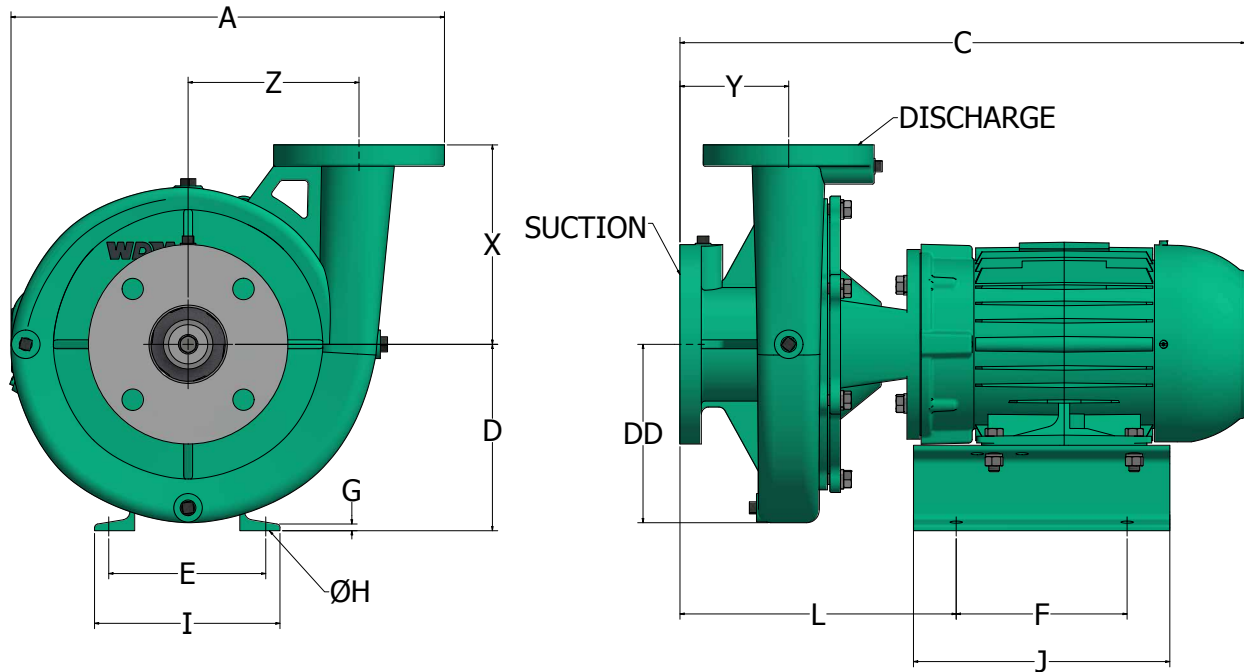
Model	Ref.	A	C	D	DD	E	F	G	H	I	L	J	X	Y	Z	Frame	Suc	Dis
KE 1.5 100	1E0525	11,75	23,10	7,00	5,16	11,99	7,00	0,12	0,44	13,49	8,62	12,25	5,13	2,92	5,29	215JM	2"NPT	1.5"NPT
KE 1.5 150	1E0526P	16,98	28,06	6,25	5,18	9,86	8,25	0,71	0,53	11,50	13,09	10,00	4,25	3,59	5,50	254JM	2"NPT	1.5"NPT
KE 1.5 200	1E0557	16,98	28,06	6,25	5,18	9,86	8,25	0,71	0,53	11,50	13,09	10,00	4,25	3,59	5,50	254JM	2"NPT	1.5"NPT
KE 1.5 250	1E0527	16,98	28,06	6,25	5,18	9,86	8,25	0,71	0,53	11,50	13,09	10,00	4,25	3,59	5,50	254JM	2"NPT	1.5"NPT
KE 3 150	1E0534P	16,97	28,20	6,25	5,43	10,00	8,25	0,70	0,53	11,50	13,23	10,00	6,38	3,04	3,75	254JM	3"NPT	3"NPT
KE 3 200	1E0587	16,97	28,20	6,25	5,43	10,00	8,25	0,70	0,53	11,50	13,23	10,00	6,38	3,04	3,75	254JM	3"NPT	3"NPT
KE 3 250	1E0535P	18,25	30,77	7,00	5,43	11,00	9,50	1,02	0,53	13,78	13,73	11,58	6,38	3,04	4,08	284JM	3"NPT	3"NPT

Dimensions High Pressure Line

QE (B) Pumps
Close Coupled



www.wdmpumps.com



QE (B) - Dimensions (mm)

Model	Ref.	A	C	D	DD	E	F	G	H	I	L	J	X	Y	Z	Frame	Suc	Dis
QE 2 150 (B)	1E0522P	19,28	28,61	8,50	6,26	13,88	8,94	0,25	0,44	15,88	12,11	16,00	7,00	3,82	6,00	254JM	2.5" B	2" B
QE 2 200 (B)	1E0588	19,28	28,61	8,50	6,26	13,88	8,94	0,25	0,44	15,88	12,11	16,00	7,00	3,82	6,00	254JM	2.5" B	2" B
QE 2 250 (B)	1E0523P	19,92	32,68	9,09	6,26	14,86	8,94	0,25	0,44	16,86	15,83	16,00	7,00	3,82	6,00	284JM	2.5" B	2" B
QE 2 300 (B)	1E0524	19,92	32,68	9,09	6,26	14,86	8,94	0,25	0,44	16,86	15,83	16,00	7,00	3,82	6,00	286JM	2.5" B	2" B
QE 2 400 (B)	1E0589	21,38	33,73	11,87	6,26	12,52	145,00	0,25	0,56	13,97	10,38	18,00	7,00	3,82	6,00	324JM	2.5" B	2" B
QE 2.5 150 (B)	1E0590P	20,83	28,11	8,50	7,79	13,88	8,94	0,13	0,44	15,88	11,61	16,00	8,25	3,75	7,00	254JM	3" B	2.5" B
QE 2.5 200 (B)	1E0591	20,83	28,11	8,50	7,79	13,88	8,94	0,13	0,44	15,88	11,61	16,00	8,25	3,75	7,00	254JM	3" B	2.5" B
QE 2.5 250 (B)	1E0592P	21,44	32,19	11,09	7,79	10,98	11,81	0,25	0,56	12,36	13,08	21,26	8,25	3,75	7,00	286JM	3" B	2.5" B
QE 2.5 300 (B)	1E0593	21,44	32,19	11,09	7,79	10,98	11,81	0,25	0,56	12,36	13,08	21,26	8,25	3,75	7,00	286JM	3" B	2.5" B
QE 2.5 400 (B)	1E0594	22,88	33,24	11,87	7,79	12,52	11,81	0,25	0,56	13,89	13,55	21,28	8,25	3,75	7,00	324JM	3" B	2.5" B
QE 2.5 500 (B)	1E0595	22,88	33,24	11,87	7,79	12,52	11,81	0,25	0,56	13,89	13,55	21,28	8,25	3,75	7,00	324JM	3" B	2.5" B
QE 3 200 (B)	1E0596	21,30	28,25	8,50	4,50	13,88	8,94	0,25	0,44	15,88	11,75	16,00	8,38	3,95	7,25	254JM	4" B	3" B
QE 3 250 (B)	1E0597P	21,94	30,82	9,34	8,26	14,86	8,94	0,25	0,44	16,86	13,99	16,00	8,38	3,95	7,25	284JM	4" B	3" B
QE 3 300 (B)	1E0598	21,94	30,82	9,34	8,26	14,86	8,94	0,25	0,44	16,86	13,99	16,00	8,38	3,95	7,25	284JM	4" B	3" B
QE 3 400 (B)	1E0599	23,38	34,86	11,87	8,26	12,52	17,50	0,25	0,56	14,77	8,93	25,63	8,38	3,95	7,25	324JM	4" B	3" B
QE 3 500 (B)	1E0600	23,38	34,86	11,87	8,26	12,52	17,50	0,25	0,56	14,77	8,93	25,63	8,38	3,95	7,25	326JM	4" B	3" B
QE 3 600 (B)	1E0601	26,92	37,60	13,00	8,26	14,02	17,50	0,25	0,56	16,27	9,55	25,63	8,38	3,95	7,25	364JM	4" B	3" B
QE 3 750 (B)	1E0602	26,92	37,60	13,00	8,26	14,02	17,50	0,25	0,56	16,27	9,55	25,63	8,38	3,95	7,25	364JM	4" B	3" B
QE 4 400 (B)	1E0603	24,38	37,30	11,87	8,76	12,52	14,50	0,25	0,56	13,97	13,95	18,00	11,25	5,35	7,50	324JM	5" B	4" B
QE 4 500 (B)	1E0604	24,38	37,30	11,87	8,76	12,52	14,50	0,25	0,56	13,97	13,95	18,00	11,25	5,35	7,50	324JM	5" B	4" B
QE 4 600 (B)	1E0605	28,00	40,16	15,00	8,76	14,02	17,50	0,25	0,56	15,61	12,11	25,63	11,25	5,35	7,50	364JM	5" B	4" B
QE 4 750 (B)	1E0606	28,00	40,16	15,00	8,76	14,02	17,50	0,25	0,56	15,61	12,11	25,63	11,25	5,35	7,50	364JM	5" B	4" B

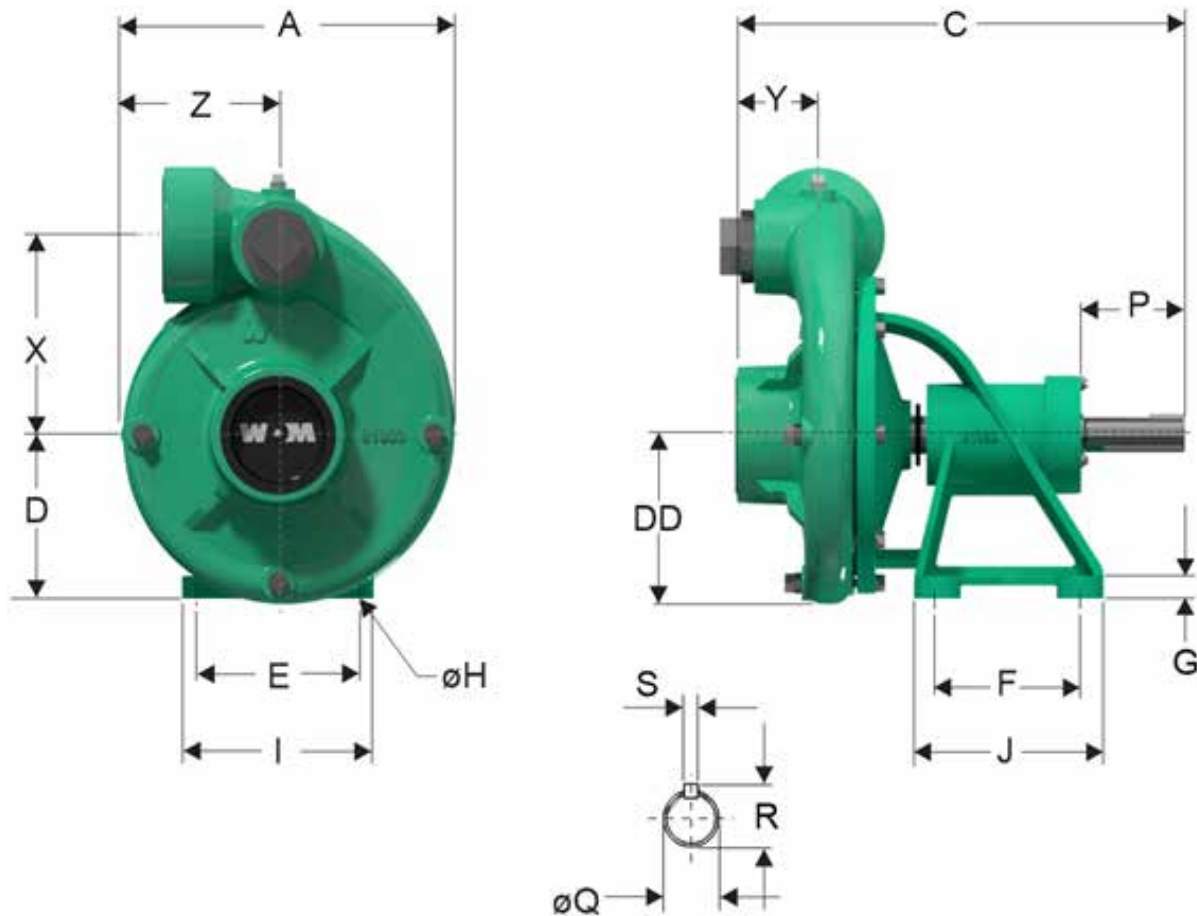
QE (B) - Dimensions (mm)																		
Model	Ref.	A	C	D	DD	E	F	G	H	I	L	J	X	Y	Z	Frame	Suc	Dis
QE 2 15-4	1E0607	15,22	19,85	6,54	6,26	5,51	6,00	0,13	0,44	6,51	9,70	9,00	7,00	3,82	6,00	145JM	2.5B	2B
QE 2 20-4	1E0608	15,22	19,85	6,54	6,26	5,51	6,00	0,13	0,44	6,51	9,70	9,00	7,00	3,82	6,00	145JM	2.5B	2B
QE 2 30-4	1E0609	16,52	21,58	6,25	6,26	11,00	7,00	0,13	0,44	12,49	9,33	12,25	7,00	3,82	6,00	182JM	2.5B	2B
QE 2 50-4	1E0610	16,52	21,58	7,16	6,26	11,00	7,13	0,13	0,44	12,49	9,62	11,88	7,00	3,82	6,00	182JM	2.5B	2B
QE 2.5 50-4	1E0611	18,19	21,64	8,50	7,79	7,50	8,31	0,13	0,44	9,13	9,07	11,81	8,25	3,75	7,00	184JM	3B	2.5B
QE 2.5 75-4	1E0612	19,14	24,48	8,25	7,79	8,50	6,00	0,13	0,44	9,50	12,11	9,00	8,25	3,75	7,00	213JM	3B	2.5B
QE 2.5 100-4	1E0613	19,14	24,48	9,25	7,79	8,50	8,31	0,13	0,44	10,13	9,68	11,81	8,25	3,75	7,00	215JM	3B	2.5B
QE 2.5 150-4	1E0614	20,83	28,11	8,50	7,79	13,88	8,94	0,13	0,44	15,88	11,61	16,00	8,25	3,75	7,00	254JM	3B	2.5B
QE 3 75-4	1E0615	19,64	24,60	9,25	8,26	8,50	8,31	0,13	0,44	10,13	9,80	11,81	8,38	3,95	7,25	213JM	4B	3B
QE 3 100-4	1E0616	19,64	24,60	9,25	8,26	8,50	8,31	0,13	0,44	10,13	9,80	11,81	8,38	3,95	7,25	215JM	4B	3B
QE 3 150-4	1E0617	21,27	28,25	8,50	8,26	13,88	8,94	0,13	0,44	15,88	11,75	16,00	8,38	3,95	7,25	254JM	4B	3B
QE 3 200-4	1E0618	21,27	28,25	8,50	8,26	13,88	8,94	0,13	0,44	15,88	11,75	16,00	8,38	3,95	7,25	256JM	4B	3B
QE 4 150-4	1E0619	22,28	30,81	12,25	8,88	10,00	11,81	0,13	0,44	11,37	15,25	21,26	11,25	5,35	7,50	254JM	5B	4B
QE 4 200-4	1E0620	22,28	30,81	12,25	8,88	10,00	11,81	0,13	0,44	11,37	15,25	21,26	11,25	5,35	7,50	256JM	5B	4B
QE 4 250-4	1E0621	22,94	33,37	11,09	8,76	10,98	14,50	0,13	0,44	12,43	16,59	18,00	11,25	5,35	7,50	284JM	5B	4B
QE 4 300-4	1E0622	22,94	33,37	11,09	8,76	10,98	14,50	0,13	0,44	12,43	16,59	18,00	11,25	5,35	7,50	286JM	5B	4B
QE 6 200-4	1E0623	25,68	29,21	12,25	11,35	10,00	11,81	0,13	0,56	12,00	10,97	19,69	11,00	4,11	9,50	254JM	6B	6B
QE 6 250-4	1E0624	25,92	31,77	13,00	11,35	11,00	11,81	0,13	0,56	12,37	13,01	21,26	11,00	4,11	9,50	284JM	6B	6B
QE 6 300-4	1E0625	25,91	33,27	13,09	11,35	11,00	11,81	0,13	0,56	12,00	11,48	19,69	11,00	4,11	9,50	286JM	6B	6B
QE 6 400-4	1E0626	27,38	34,33	13,87	11,35	12,50	11,42	0,13	0,56	14,12	12,87	19,29	11,00	4,11	9,50	324JM	6B	6B
QE 6 500-4	1E0627	27,38	34,33	13,87	11,35	12,50	11,42	0,13	0,56	14,12	12,87	19,29	11,00	4,11	9,50	326JM	6B	6B
QE 6 600-4	1E0628	31,00	38,81	15,00	11,35	14,00	17,50	0,13	0,56	15,60	10,76	25,63	11,00	4,11	9,50	364JM	6B	6B
QE 6 750-4	1E0629	30,90	41,79	12,86	11,35	14,00	17,50	0,13	0,56	16,27	12,96	25,63	11,00	4,11	9,50	365JP	6B	6B

Dimensions High Pressure Line

HU-QU Pumps
Close Coupled

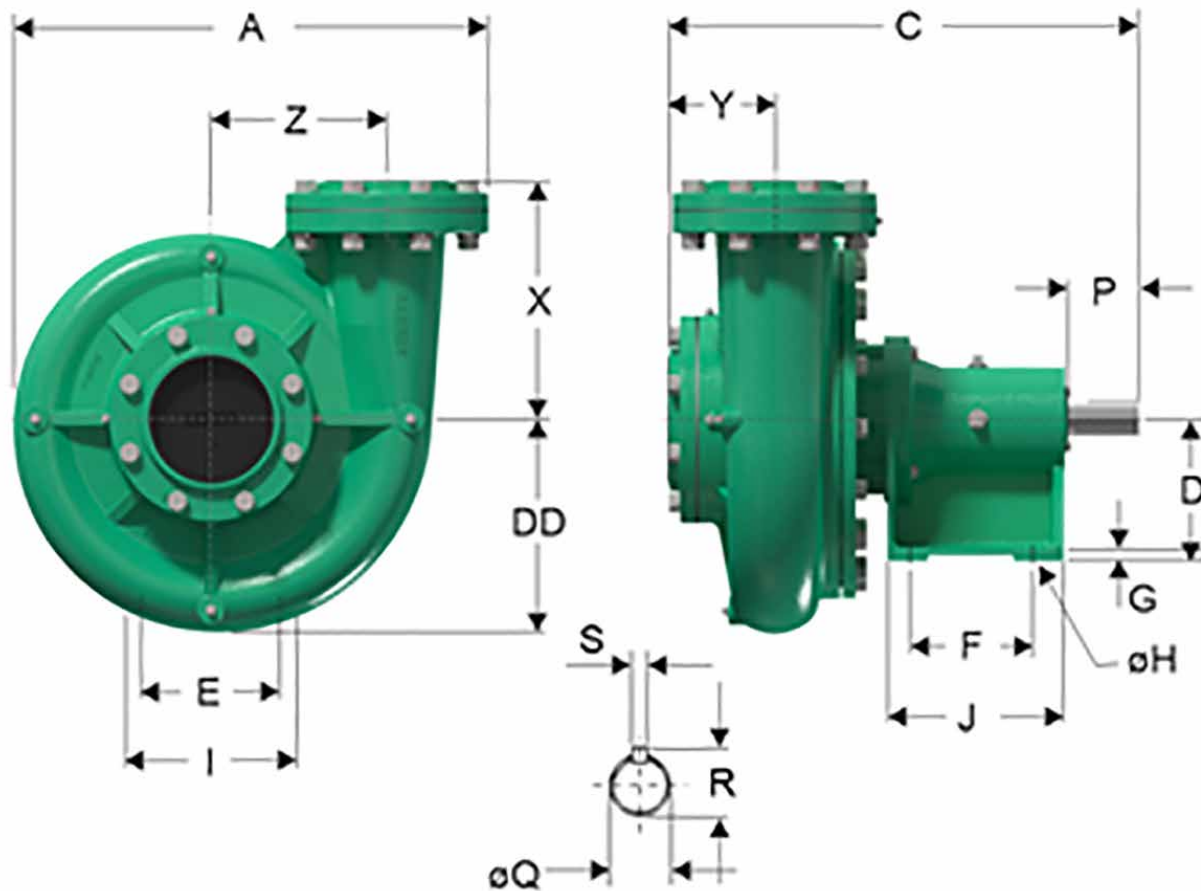


www.wdmpumps.com



HU - Dimensions (Inches)

Model	Ref.	A	C	D	DD	E	F	G	øH	I	J	X	Y	Z	P	Q	R	S	Suc	Dis
HU 1,5	1E0086	10,425	14,897	5,250	5,431	5,000	4,687	0,733	0,437	6,300	6,237	5,062	2,922	5,000	3,409	1,124	1,236	0,250	1-1/2	1-1/2
HU 2	1E0002	10,972	14,782	5,250	5,431	5,000	4,687	0,733	0,437	6,300	6,237	6,375	2,687	3,750	3,409	1,124	1,236	0,250	2	2
HU 2-2	1E0494	12,566	22,115	8,500	5,518	8,500	6,000	0,786	0,562	10,125	8,250	7,924	4,965	7,125	3,867	1,375	1,513	0,312	2	2
HU 3	1E0011	10,968	14,718	5,250	5,431	5,000	4,687	0,733	0,437	6,300	6,237	6,375	2,687	3,750	3,409	1,124	1,236	0,250	3	3
QU 3	1E0020	10,968	14,718	5,250	5,431	5,000	4,687	0,733	0,437	6,300	6,237	6,375	2,687	3,750	3,409	1,124	1,236	0,250	3	3
HU 3-2	1E0495	13,817	24,937	8,500	6,171	8,500	6,000	0,786	0,562	10,125	8,250	9,312	5,562	7,719	3,867	1,375	1,513	0,312	3	3



QU - Dimensions (Inches)																				
Model	Ref.	A	C	D	DD	E	F	G	H	I	J	X	Y	Z	P	Q	R	S	Suc	Dis
QU 2	1E0025	15,218	21,952	7,093	6,263	5,500	9,500	0,750	0,562	7,000	11,062	7,000	3,851	6,000	3,647	1,375	1,513	0,312	2-1/2	2
HU 2,5	1E0018	18,190	21,500	7,093	7,750	5,500	9,500	0,750	0,562	7,000	11,062	8,250	3,750	7,000	3,650	1,375	1,513	0,312	3	2-1/2
QU 4-2	1E0022	20,879	26,746	7,093	9,375	5,500	9,500	0,750	0,562	7,000	11,062	13,250	8,272	7,625	3,647	1,375	1,513	0,312	4	4
QU 4	1E0023	19,250	20,437	7,000	8,750	10,000	6,500	0,698	0,562	11,250	9,500	12,750	6,912	7,500	3,000	1,750	1,906	0,375	5	4
QU 6	1E0024	25,698	25,072	7,500	11,350	10,000	6,500	0,698	0,562	11,250	9,500	12,672	5,692	9,500	3,000	1,750	1,906	0,375	6	6

High Pressure Line

HE 1.5

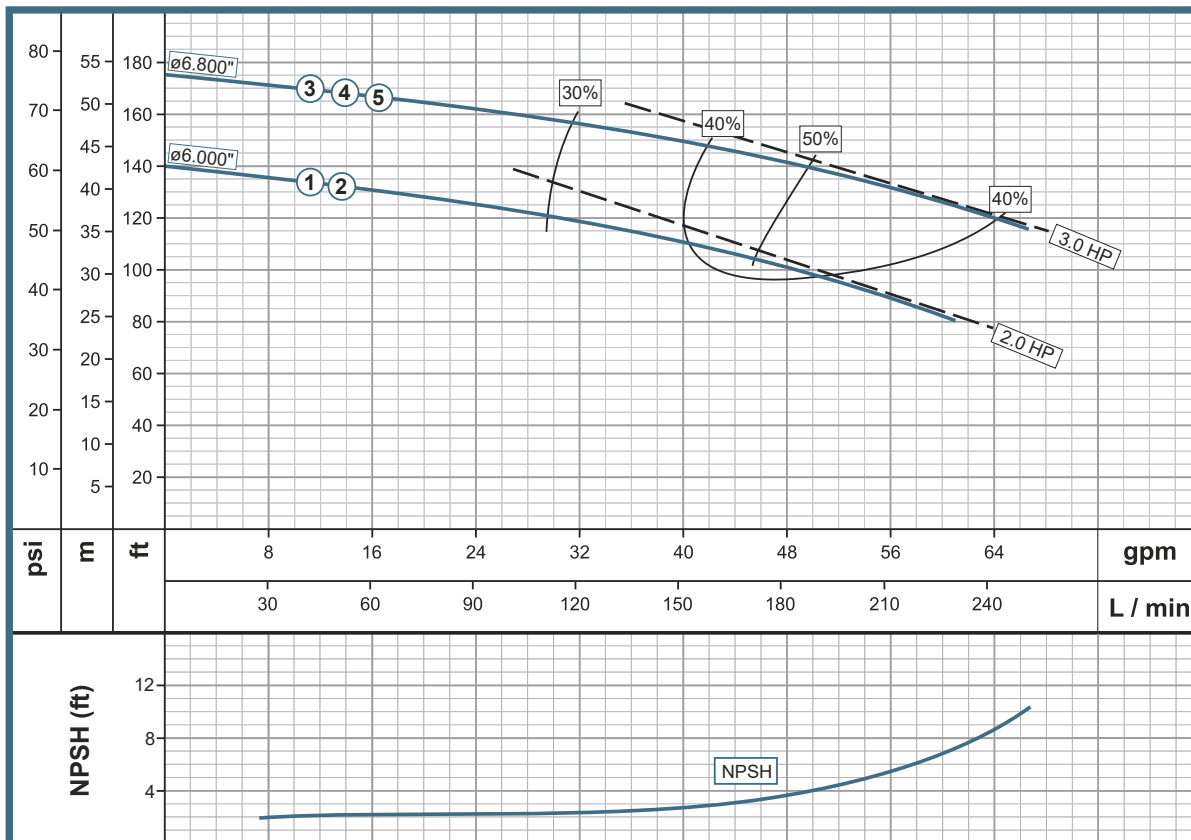


www.wdmpumps.com

Pump Features					
Pump Type		Design		Impeller	
Centrifuge		Close Coupled		Enclosed / Noryl	
Stages		Mechanical Seal		Fluid temperature	
1		5/8" T06 1-1/4" T01		158° F (70° C)	
Model	Reference	Ø Suction	Ø Discharge	Ø Impeller	
1	HE 1.5 20-1	1E0506	1.5" NPT	1.5" NPT	5.700"
2	HE 1.5 20	1E0508	1.5" NPT	1.5" NPT	6.000"
3	HE 1.5 30-1	1E0559	1.5" NPT	1.5" NPT	6.800"
4	HE 1.5 30	1E0509	1.5" NPT	1.5" NPT	6.800"
5	HE 1.5 30-1-CE	1E0507	1.5" NPT	1.5" NPT	6.800"

Motor Features				
Drive		Speed (RPM)	Frequency (Hz)	
Electric		3600	60	
Power (hp)	Phases	Voltage (V)	Frame	
2	1	127/230	ODP	
2	3	230/460	TEFC	
3	1	230	ODP	
3	3	230/460	TEFC	
3	1	230	ODP	

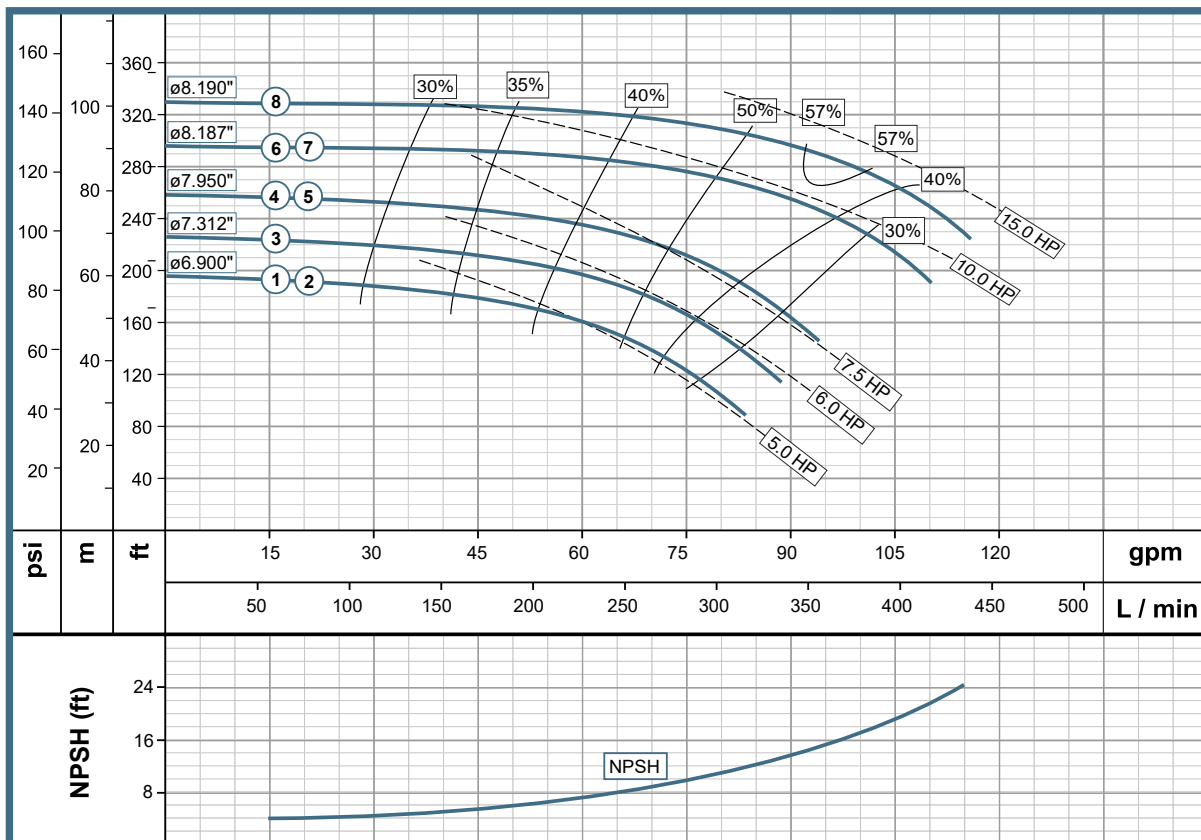
Performance Curve



Pump Features					
Pump Type		Design		Impeller	
Centrifuge		Close Coupled		Enclosed	
Stages		Mechanical Seal		Fluid temperature	
1		1-1/4" T01		158° F (70° C)	
Model	Reference	Ø Suction	Ø Discharge	Ø Impeller	
1	HE 1.5 50	1E0511	1.5" NPT	1.5" NPT 6,90	
2	HE 1.5 50-1	1E0512 / 1E0415	1.5" NPT	1.5" NPT 6,90	
3	HE 1.5 60	1E0513	1.5" NPT	1.5" NPT 7,312	
4	HE 1.5 75	1E0514P	1.5" NPT	1.5" NPT 7,950	
5	HE 1.5 75-1	1E0669	1.5" NPT	1.5" NPT 7,950	
6	HE 1.5 100	1E0390	1.5" NPT	1.5" NPT 8,187	
7	HE 1.5 100-1	1E0665	1.5" NPT	1.5" NPT 8,187	
8	HE 1.5 150	1E0388	1.5" NPT	1.5" NPT 8,187	

Motor Features				
Drive		Speed (RPM)	Frequency (Hz)	
Electric		3600	60	
Power (hp)	Phases	Voltage (V)	Frame	
5	3	230/460	TEFC	
5	1	230	ODP / TEFC	
6	3	230/460	TEFC	
7,5	3	230/460	TEFC	
7,5	1	230	ODP	
10	3	230/460	TEFC	
10	1	230	ODP	
15	3	230/460	TEFC	

Performance Curve



High Pressure Line

QE 1.5

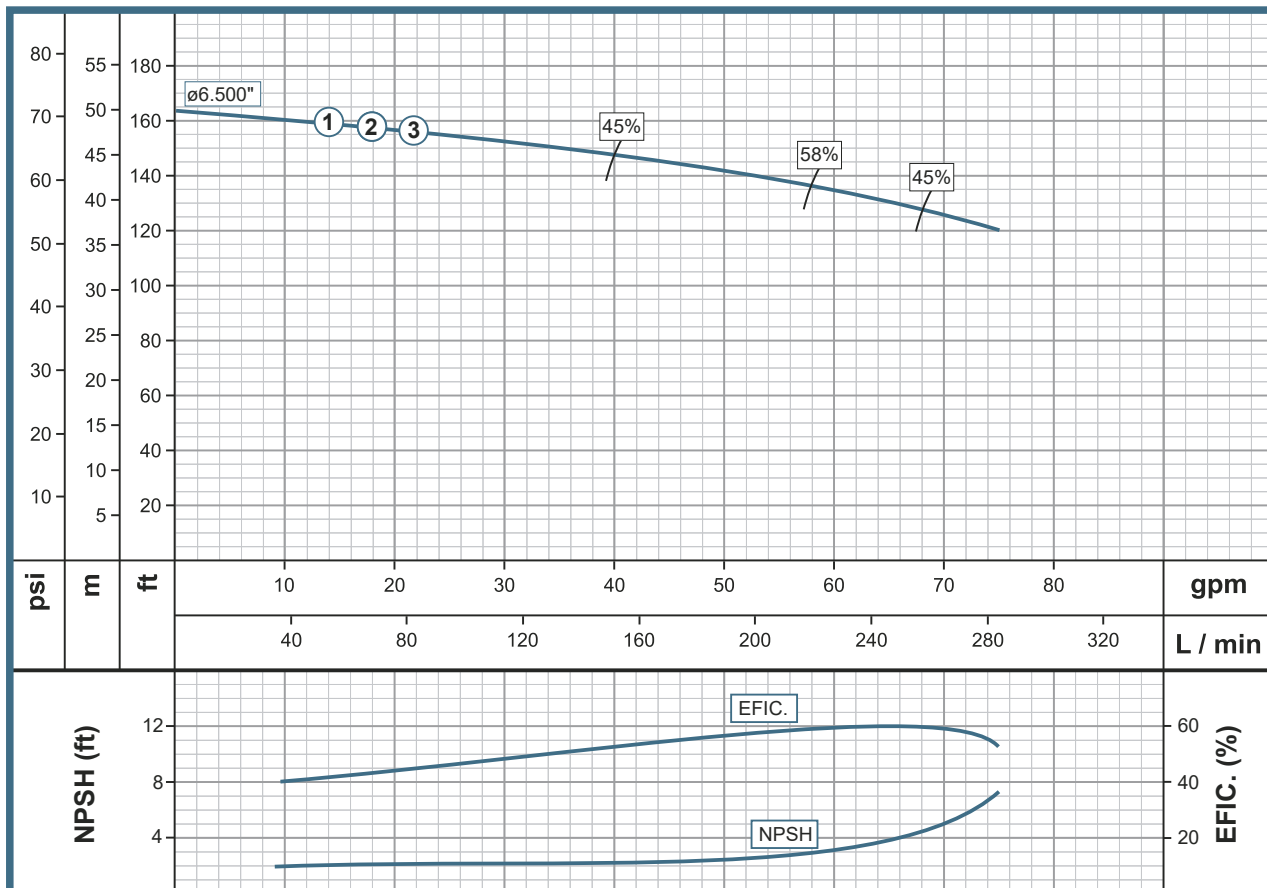


www.wdmpumps.com

Pump Features					
Pump Type		Design		Impeller	
Centrifuge		Close Coupled		Enclosed	
Stages		Mechanical Seal		Fluid temperature	
1		5/8" T06 1-1/4" T01		158° F (70° C)	
Model		Reference	Ø Suction	Ø Discharge	Ø Impeller
1	QE 1.5 30	1E0510	1.5" NPT	1.5" NPT	6.500"
2	QE 1.5 30-1	1E0565	1.5" NPT	1.5" NPT	6.500"
3	QE 1.5 30-1 CE	1E0031	1.5" NPT	1.5" NPT	6.500"

Motor Features			
Drive		Speed (RPM)	Frequency (Hz)
Electric		3600	60
Power (hp)	Phases	Voltage (V)	Frame
3	3	230/460	TEFC
3	1	230	ODP
3	1	230	ODP

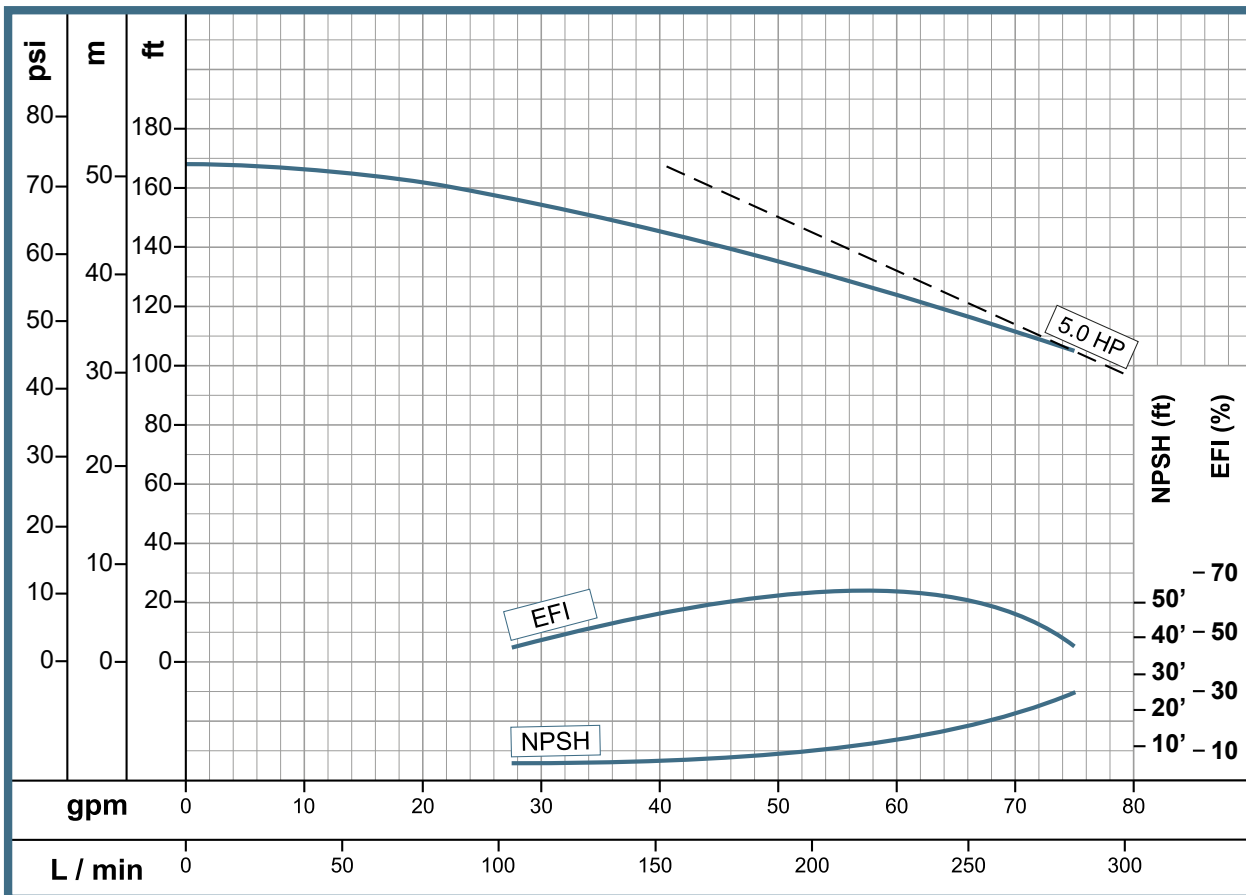
Performance Curve



Pump Features					
Pump Type		Design		Impeller	
Centrifuge		Close Coupled		Enclosed	
Stages		Mechanical Seal		Fluid temperature	
1		1-1/4" T01		158° F (70° C)	
Model		Reference	Ø Suction	Ø Discharge	Ø Impeller
1	QE 1.5 50	1E0580	1.5" NPT	1.5" NPT	6.800"

Motor Features			
Drive		Speed (RPM)	Frequency (Hz)
Electric		3600	60
Power (hp)	Phases	Voltage (V)	Enclosure
5	3	220/440	TEFC

Performance Curve



High Pressure Line

KE 1.5

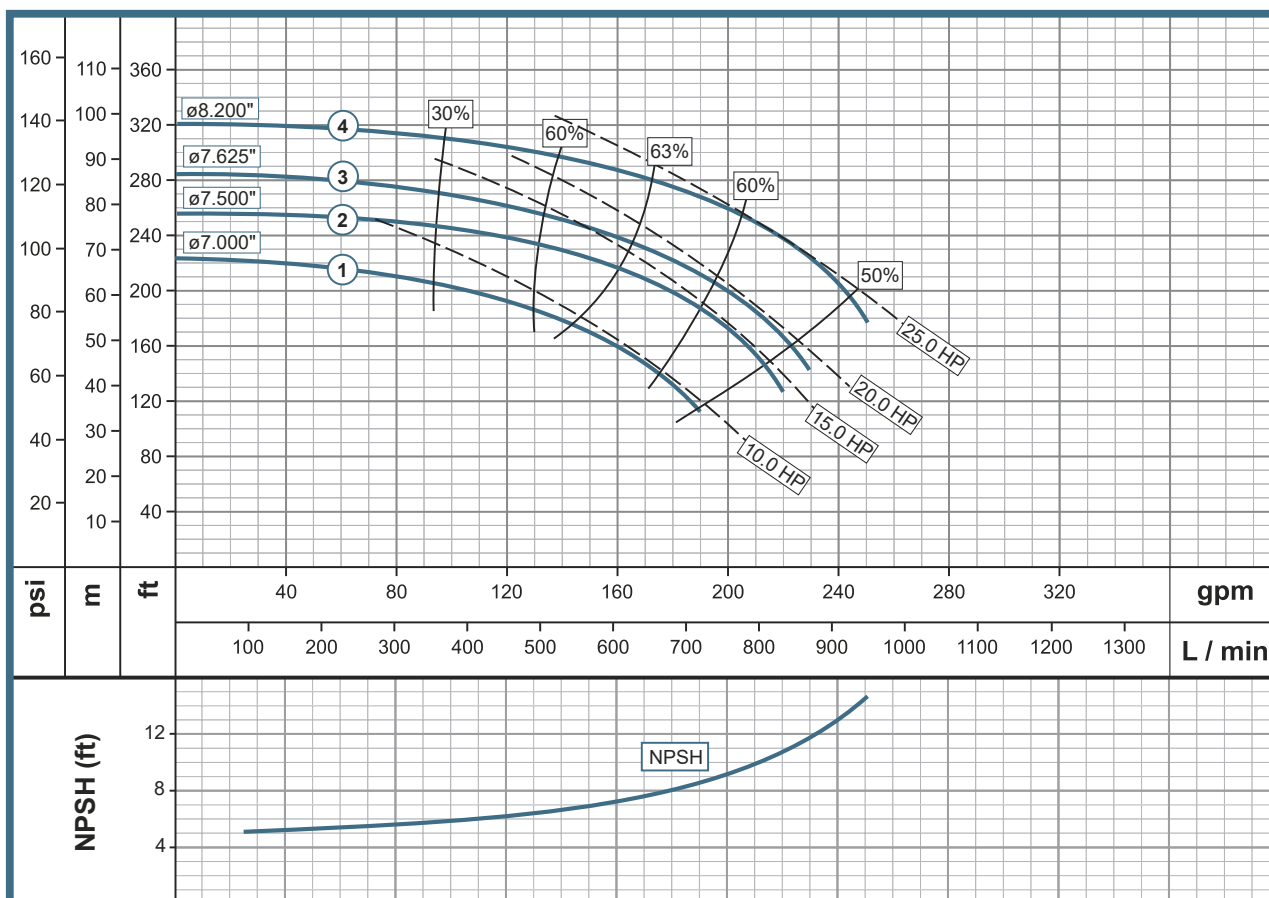


www.wdmpumps.com

Pump Features					
Pump Type	Design	Impeller			
Centrifuge	Close Coupled	Enclosed			
Stages	Mechanical Seal	Fluid temperature			
1	1-1/2" T01	158° F (70° C)			
Model	Reference	Ø Suction	Ø Discharge	Ø Impeller	
1	KE 1.5 100	1E0525	2"NPT	1.5" NPT	7.000"
2	KE 1.5 150	1E0526P	2"NPT	1.5" NPT	7.500"
3	KE 1.5 200	1E0557	2"NPT	1.5" NPT	7.625"
4	KE 1.5 250	1E0527	2"NPT	1.5" NPT	8.200"

Motor Features			
Drive		Speed (RPM)	Frequency (Hz)
Electric		3600	60
Power (hp)	Phases	Voltage (V)	Enclosure
10	3	230/460	TEFC
15	3	230/460	TEFC
20	3	230/460	TEFC
25	3	230/460	TEFC

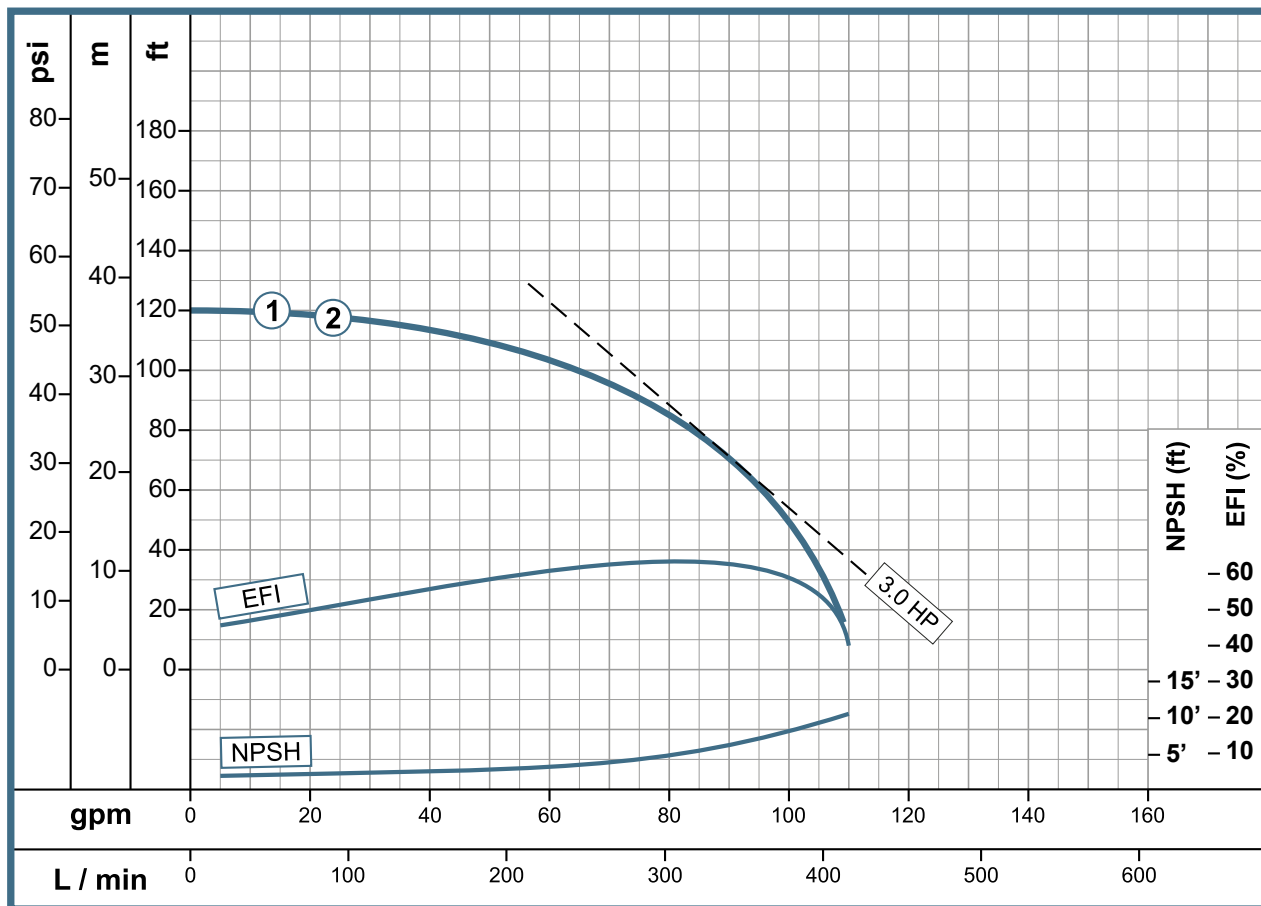
Performance Curve



Pump Features					
Pump Type	Design		Impeller		
Centrifuge	Close Coupled		Enclosed		
Stages	Mechanical Seal		Fluid temperature		
1	5/8" T06 1-1/4" T01		158° F (70° C)		
Model	Reference	Ø Suction	Ø Discharge	Ø Impeller	
1 HE 2 30-1	1E0218	2"NPT	2" NPT	5.500"	
2 HE 2 30	1E0581	2"NPT	2" NPT	5.500"	

Motor Features			
Drive		Speed (RPM)	Frequency (Hz)
Electric		3600	60
Power (hp)	Phases	Voltage (V)	Enclosure
3	1	230	ODP
3	3	230/460	TEFC

Performance Curve



High Pressure Line

HE 2

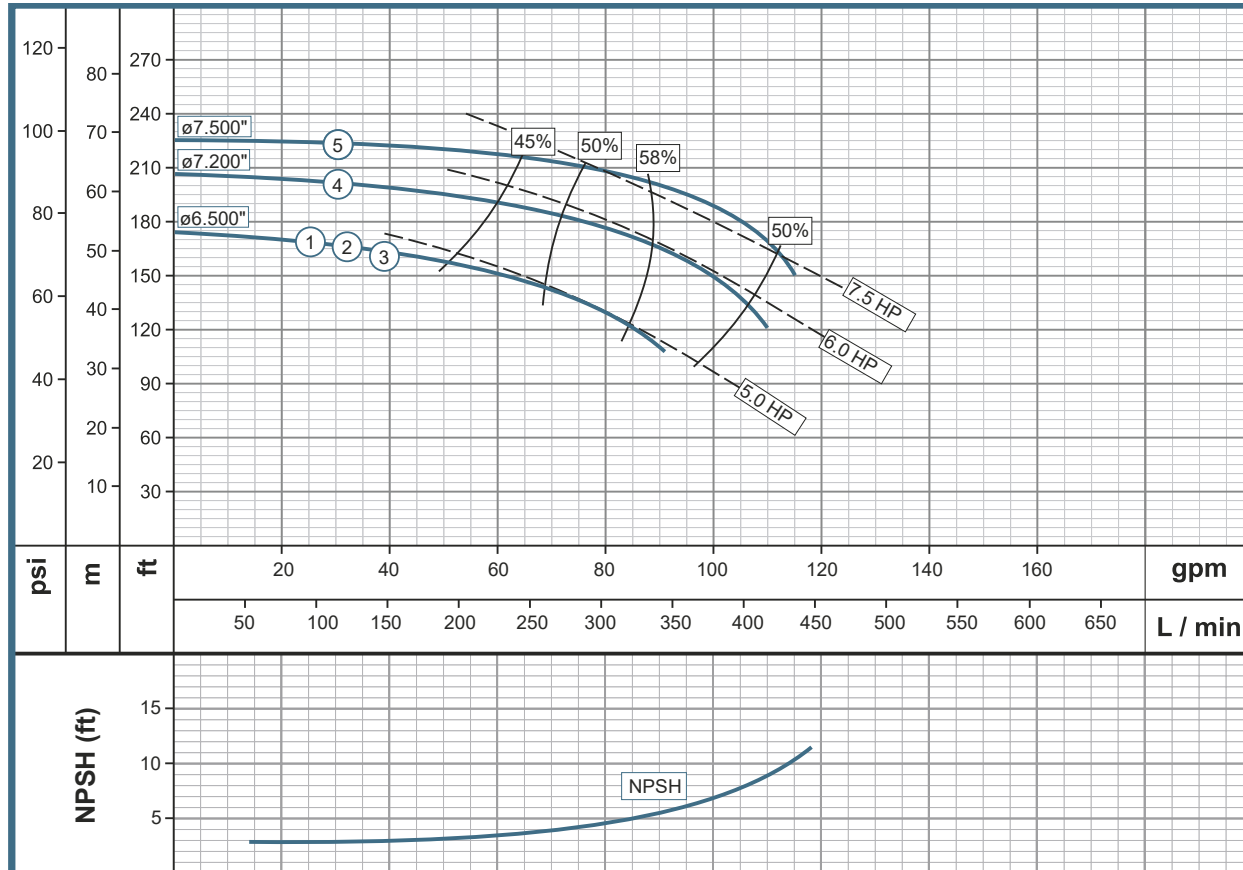


www.wdmpumps.com

Pump Features					
Pump Type	Design		Impeller		
Centrifuge	Close Coupled		Enclosed		
Stages	Mechanical Seal		Fluid temperature		
1	1-1/4" T01		158° F (70° C)		
Model	Reference	Ø Suction	Ø Discharge	Ø Impeller	
1	HE 2 50-1 CE	1E0529	2" NPT	2" NPT	6.500"
2	HE 2 50-1 WEG	1E0758	2" NPT	2" NPT	6.500"
3	HE 2 50	1E0528	2" NPT	2" NPT	6.500"
4	HE 2 60	1E0530	2" NPT	2" NPT	7.200"
5	HE 2 75	1E0531P	2" NPT	2" NPT	7.500"

Motor Features			
Drive		Speed (RPM)	Frequency (Hz)
Electric		3600	60
Power (hp)	Phases	Voltage (V)	Enclosure
5	1	230	ODP
5	1	230	TEFC
5	3	230/460	TEFC
6	3	230/460	TEFC
7,5	3	230/460	TEFC

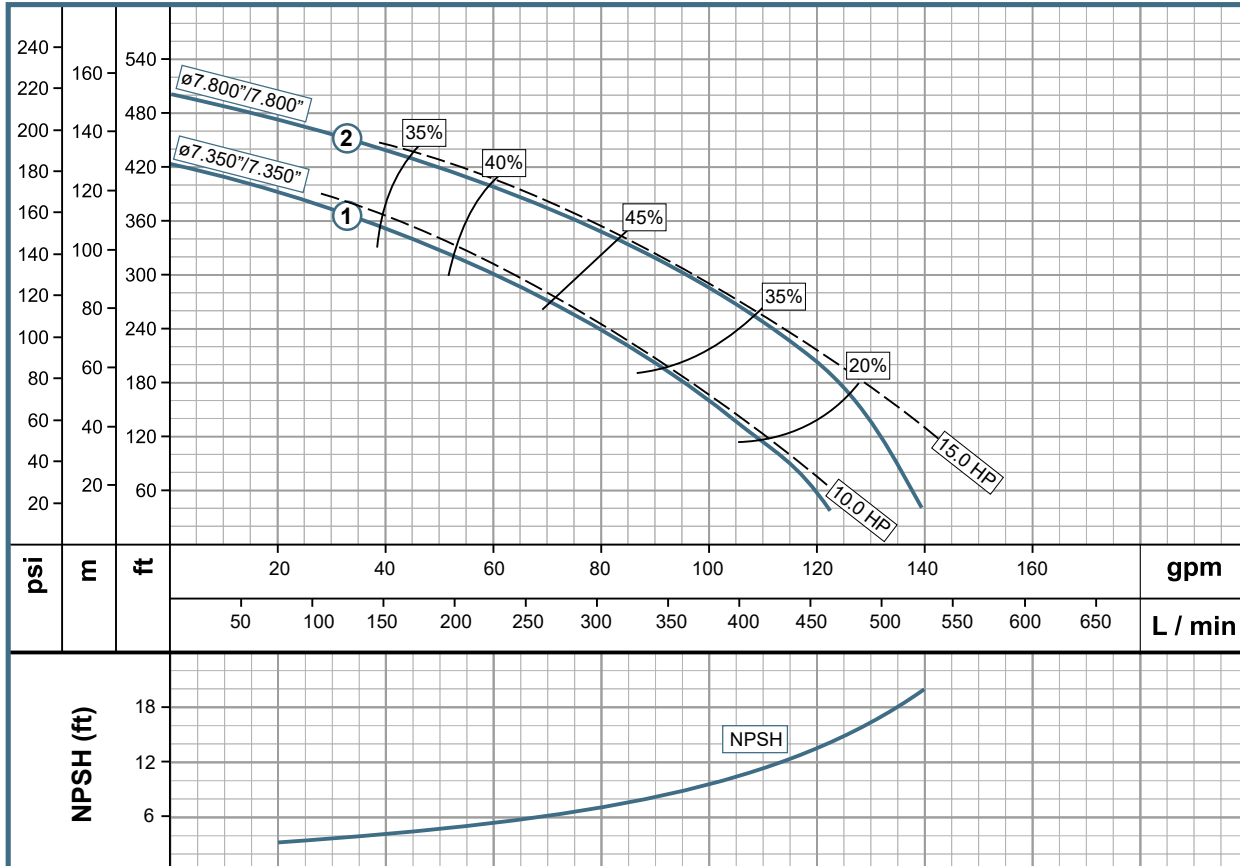
Performance Curve



Pump Features					
Pump Type		Design		Impeller	
Centrifuge		Close Coupled		Enclosed	
Stages		Mechanical Seal		Fluid temperature	
2		1-1/4" T01		158° F (70° C)	
Model		Reference	Ø Suction	Ø Discharge	Ø Impeller
1	HE 2 100-2	1E0546	2" NPT	2" NPT	7.800"
2	HE 2 150-2	1E0547P	2" NPT	2" NPT	7.350"

Motor Features			
Drive		Speed (RPM)	Frequency (Hz)
Electric		3600	60
Power (hp)	Phases	Voltage (V)	Enclosure
3	3	230/460	TEFC
3	3	230/460	TEFC

Performance Curve



High Pressure Line

QE 2

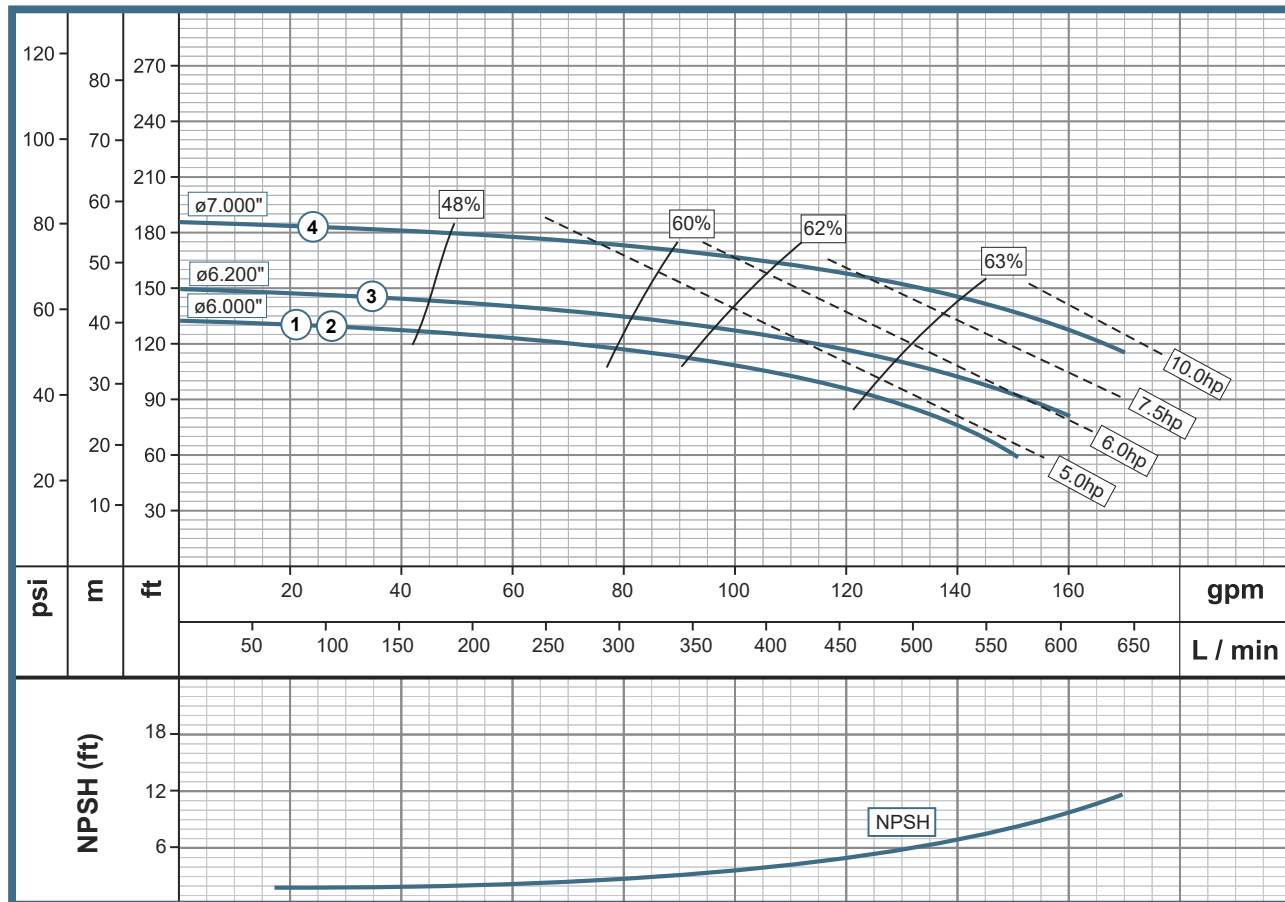


www.wdmpumps.com

Pump Features					
Pump Type	Design		Impeller		
Centrifuge	Close Coupled		Enclosed		
Stages	Mechanical Seal		Fluid temperature		
1	1-1/4" T01		158° F (70° C)		
Model	Reference	Ø Suction	Ø Discharge	Ø Impeller	
1	QE 2 50	1E0515	2"NPT	2" NPT 6.000"	
2	QE 2 50-1	1E0416	2"NPT	2" NPT 6.000"	
3	QE 2 60	1E0517	2"NPT	2" NPT 6.200"	
4	QE 2 75	1E0518P	2"NPT	2" NPT 7.000"	

Motor Features			
Drive		Speed (RPM)	Frequency (Hz)
Electric		3600	60
Power (hp)	Phases	Voltage (V)	Enclosure
5	3	230/460	TEFC
5	1	230	ODP
6	3	230/460	TEFC
7,5	3	230/460	TEFC

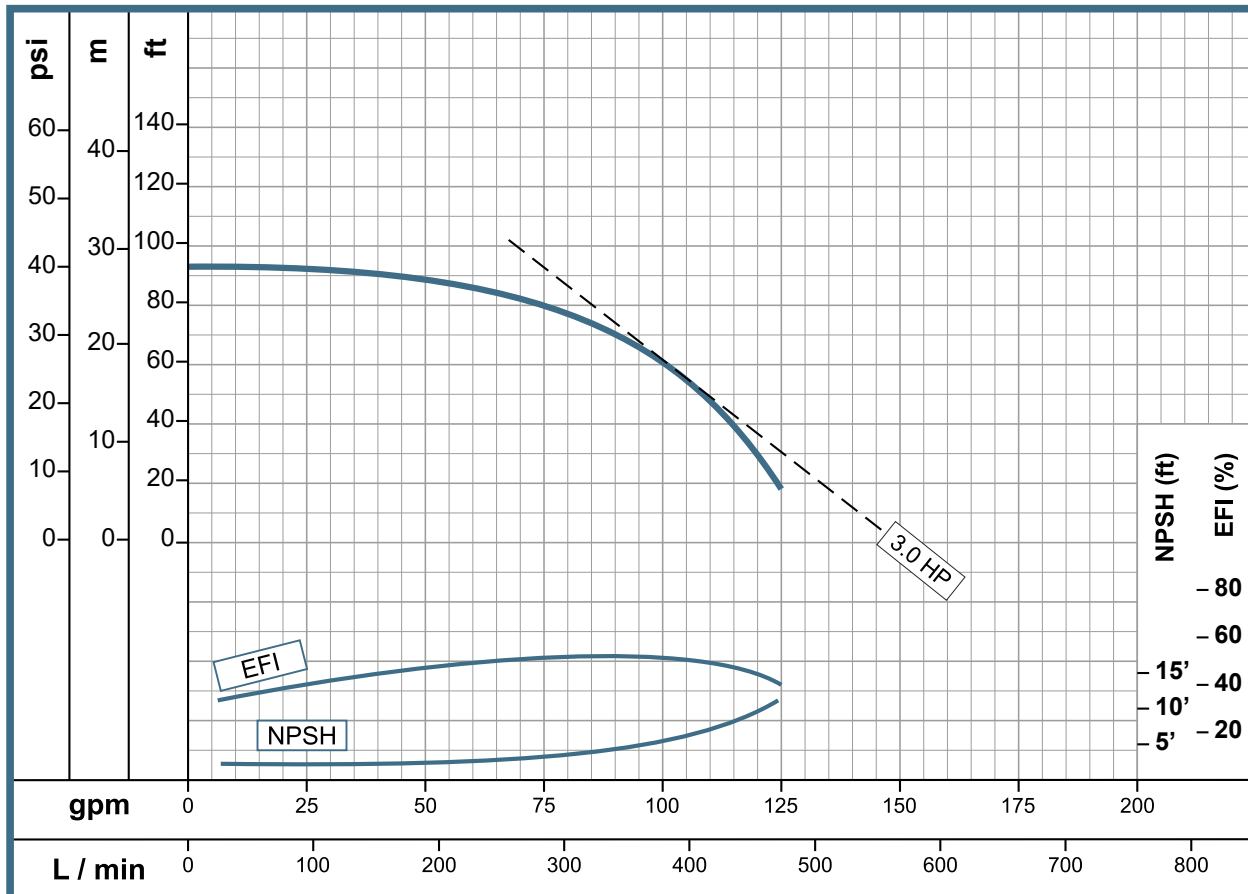
Performance Curve



Pump Features					
Pump Type		Design		Impeller	
Centrifuge		Close Coupled		Enclosed	
Stages		Mechanical Seal		Fluid temperature	
1		1-1/4" T01		158° F (70° C)	
Model		Reference	Ø Suction	Ø Discharge	Ø Impeller
1	QE 2 30	1E0583	2"NPT	2" NPT	5.600"

Motor Features			
Drive		Speed (RPM)	Frequency (Hz)
Electric		3600	60
Power (hp)	Phases	Voltage (V)	Enclosure
3	3	230/460	TEFC

Performance Curve



High Pressure Line

QE 2 (B)

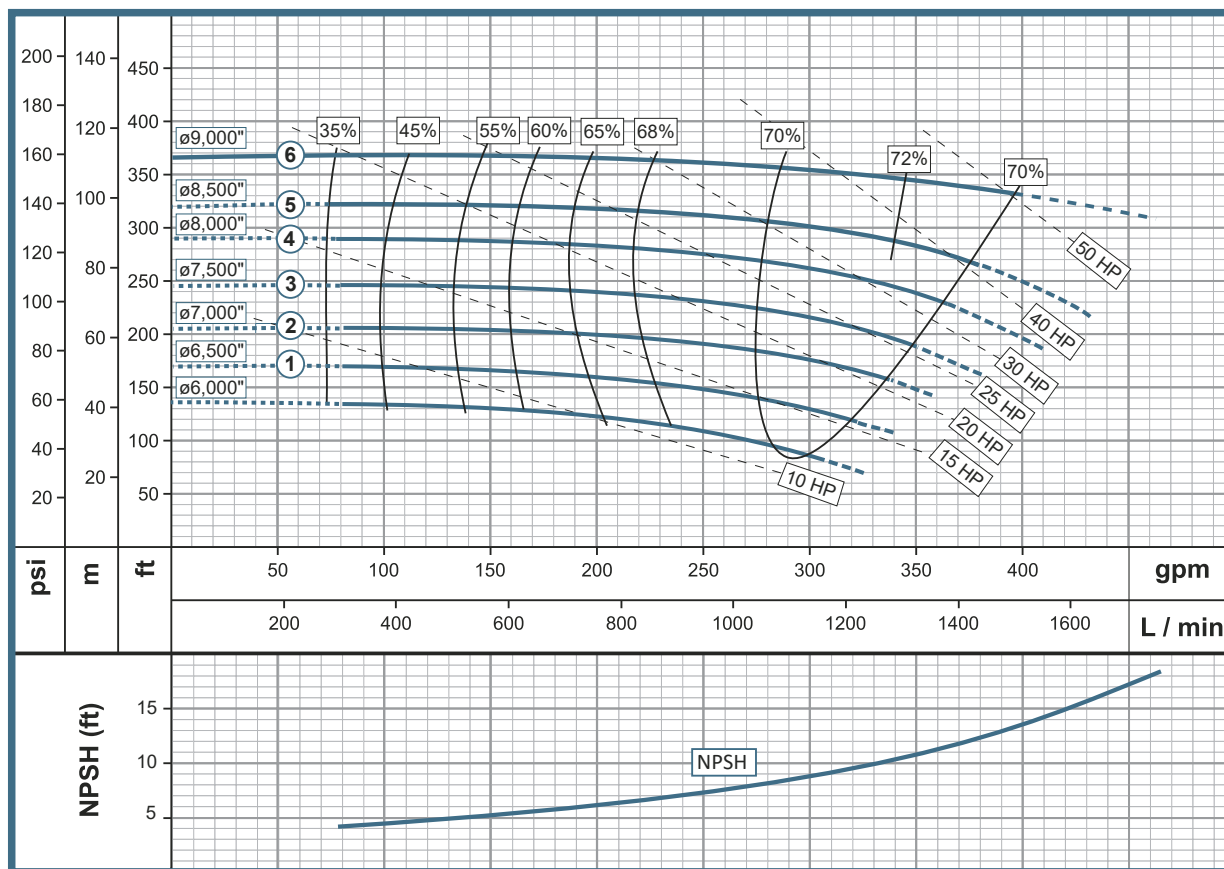


www.wdmpumps.com

Pump Features					
Pump Type	Design		Impeller		
Centrifuge	Close Coupled		Enclosed		
Stages	Mechanical Seal		Fluid temperature		
1	1 1/2" T01		158° F (70° C)		
Model	Reference	Ø Suction	Ø Discharge	Ø Impeller	
1	QE 2 150 (B)	1E0522P	2.5" B	2" B	6.500"
2	QE 2 200 (B)	1E0588	2.5" B	2" B	7.000"
3	QE 2 250 (B)	1E0523P	2.5" B	2" B	7.500"
4	QE 2 300 (B)	1E0524	2.5" B	2" B	8.000"
5	QE 2 400 (B)	1E0589	2.5" B	2" B	8.500"
6	QE 2 500 (B)	1E0766	2.5" B	2" B	9.000"

Motor Features			
Drive		Speed (RPM)	Frequency (Hz)
Electric		3550	60
Power (hp)	Phases	Voltage (V)	Enclosure
15	3	230/460	TEFC
20	3	230/460	TEFC
25	3	230/460	TEFC
30	3	230/460	TEFC
40	3	230/460	TEFC
50	3	230/460	TEFC

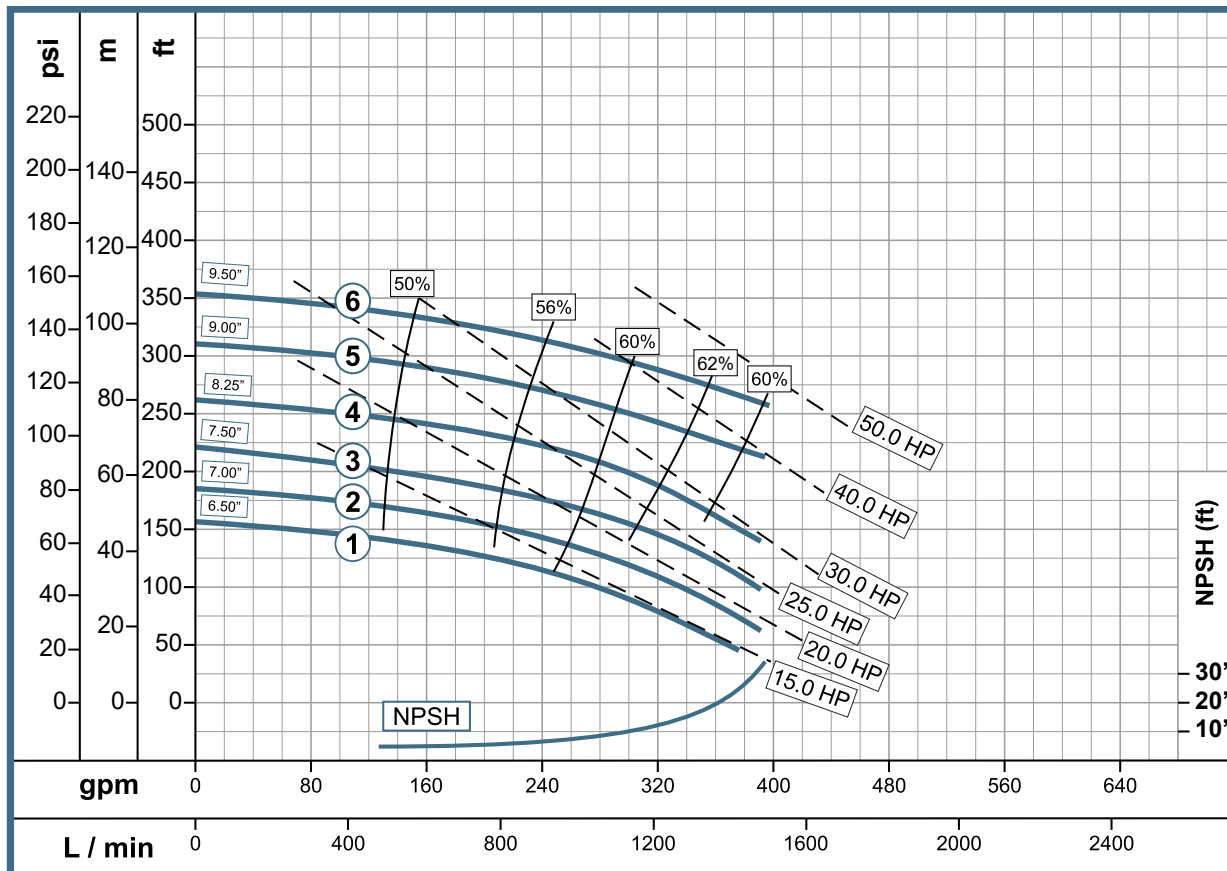
Performance Curve



Pump Features					
Pump Type	Design		Impeller		
Centrifuge	Close Coupled		Enclosed		
Stages	Mechanical Seal		Fluid temperature		
1	1-1/2" T01		158° F (70° C)		
Model	Reference	Ø Suction	Ø Discharge	Ø Impeller	
1	QE 2.5 150 (B)	1E0590P	3"B	2.5"B	6.500"
2	QE 2.5 200 (B)	1E0591	3"B	2.5"B	7.000"
3	QE 2.5 250 (B)	1E0592P	3"B	2.5"B	7.500"
4	QE 2.5 300 (B)	1E0593	3"B	2.5"B	8.250"
5	QE 2.5 400 (B)	1E0594	3"B	2.5"B	9.000"
6	QE 2.5 500 (B)	1E0595	3"B	2.5"B	9.500"

Motor Features			
Drive		Speed (RPM)	Frequency (Hz)
Electric		3600	60
Power (hp)	Phases	Voltage (V)	Enclosure
15	3	230/460	TEFC
20	3	230/460	TEFC
25	3	230/460	TEFC
30	3	230/460	TEFC
40	3	230/460	TEFC
50	3	230/460	TEFC

Performance Curve



High Pressure Line

HE 3

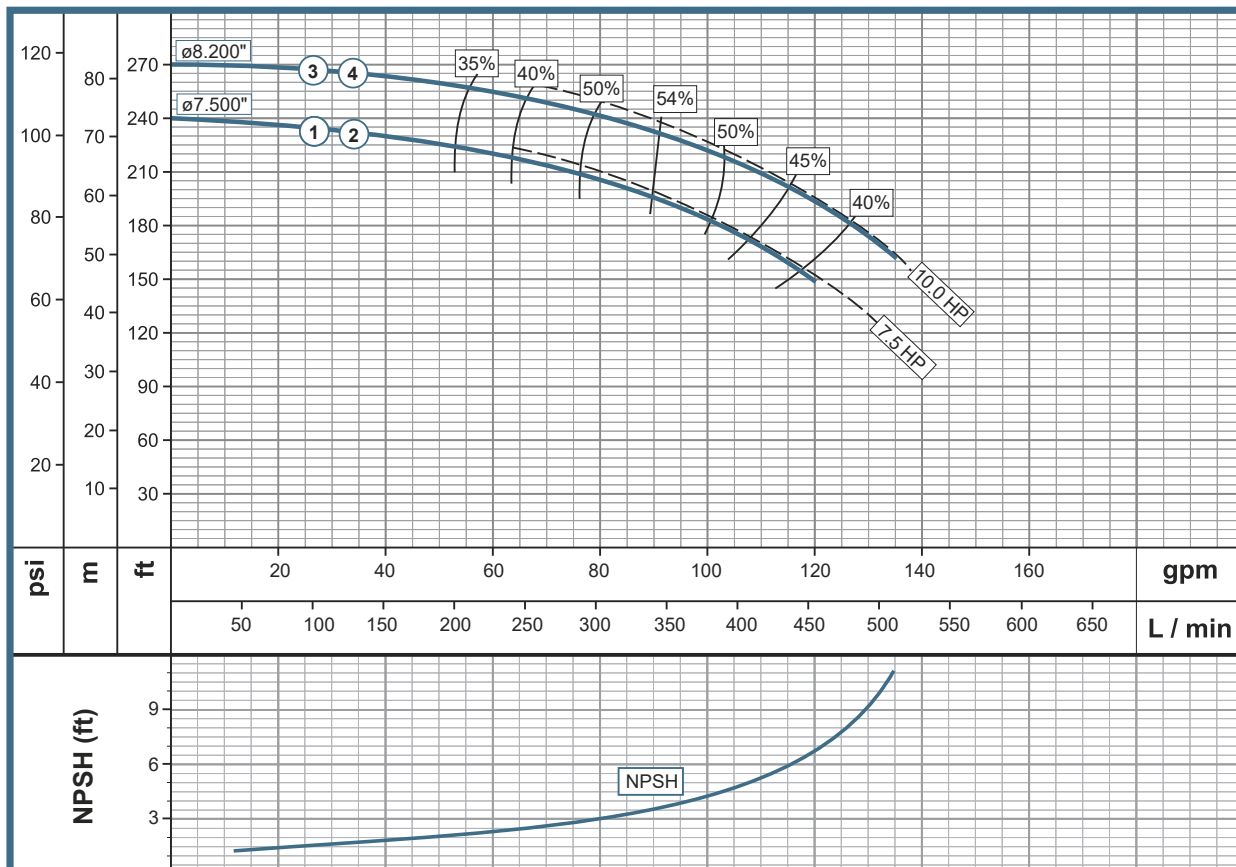


www.wdmpumps.com

Pump Features					
Pump Type	Design		Impeller		
Centrifuge	Close Coupled		Enclosed		
Stages	Mechanical Seal		Fluid temperature		
1	1-1/4" T01		158° F (70° C)		
Model	Reference	Ø Suction	Ø Discharge	Ø Impeller	
1	HE 3 75	1E0553P	3" NPT	3" NPT	7.500"
2	HE 3 75-1	1E0683	3" NPT	3" NPT	7.500"
3	HE 3 100	1E0532	3" NPT	3" NPT	8.200"
4	HE 3 100-1	1E0662	3" NPT	3" NPT	8.200"

Motor Features			
Drive		Speed (RPM)	Frequency (Hz)
Electric		3600	60
Power (hp)	Phases	Voltage (V)	Enclosure
7,5	3	230/460	TEFC
7,5	1	230	ODP
10	3	230/460	TEFC
10	1	230	ODP

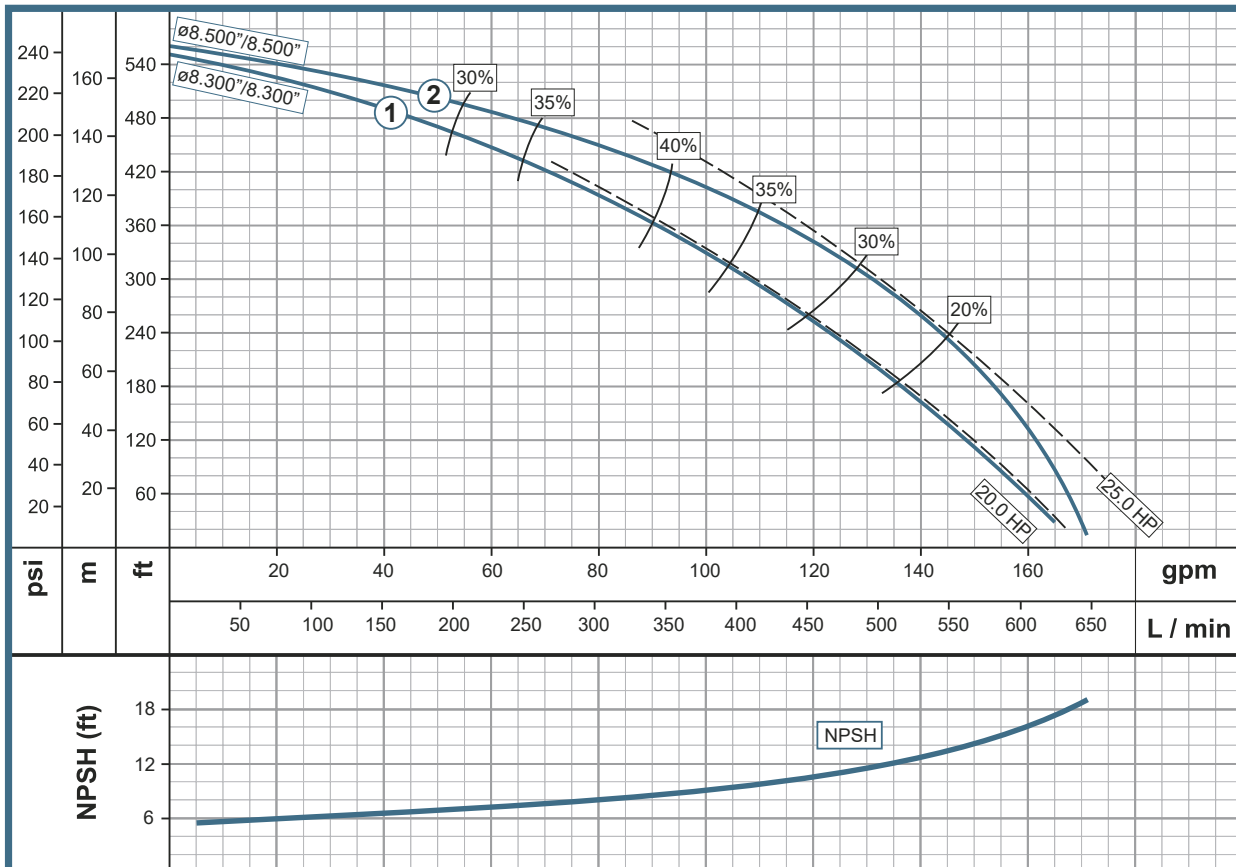
Performance Curve



Pump Features					
Pump Type	Design		Impeller		
Centrifuge	Close Coupled		Enclosed		
Stages	Mechanical Seal		Fluid temperature		
2	1-1/4" T01		158° F (70° C)		
Model	Reference	Ø Suction	Ø Discharge	Ø Impeller	
1	HE 3 200-2	1E0567	3" NPT	3" NPT	8.300"
2	HE 3 250-2	1E0568P	3" NPT	3" NPT	8.500"

Motor Features			
Drive		Speed (RPM)	Frequency (Hz)
Electric		3600	60
Power (hp)	Phases	Voltage (V)	Enclosure
20	3	230/460	TEFC
25	3	230/460	TEFC

Performance Curve



High Pressure Line

QE 3

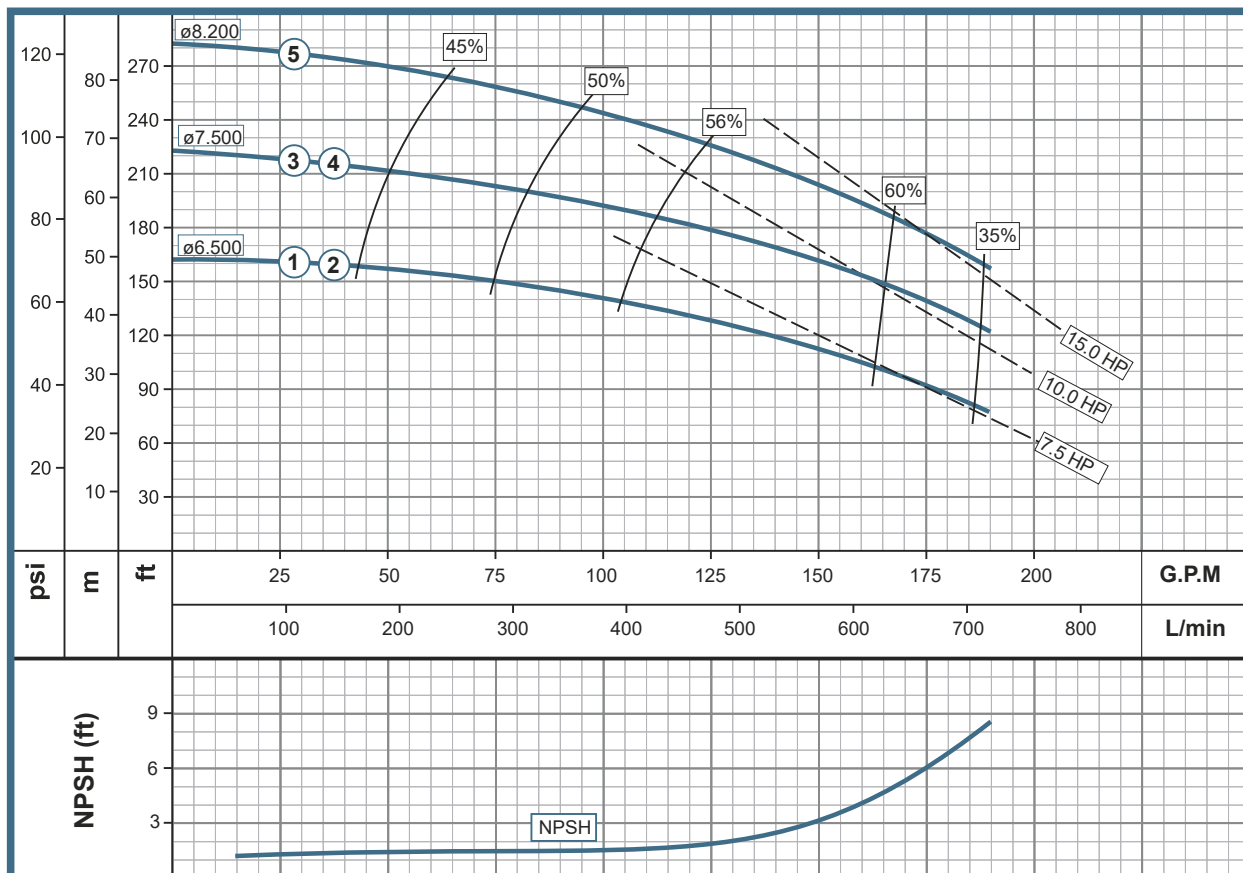


www.wdmpumps.com

Pump Features					
Pump Type	Design		Impeller		
Centrifuge	Close Coupled		Enclosed		
Stages	Mechanical Seal		Fluid temperature		
1	1-1/4" T01		158° F (70° C)		
Model	Reference	Ø Suction	Ø Discharge	Ø Impeller	
1	QE 3 75	1E0519P	3" NPT	3" NPT	6.500"
2	QE 3 75-1	1E0666	3" NPT	3" NPT	6.500"
3	QE 3 100	1E0520	3" NPT	3" NPT	7.500"
4	QE 3 100-1	1E0661	3" NPT	3" NPT	7.500"
5	QE 3 150	1E0521P	3" NPT	3" NPT	8.200"

Motor Features				
Drive		Speed (RPM)	Frequency (Hz)	
Electric		3500	60	
Power (hp)	Phases	Voltage (V)	Enclosure	
75	3	230/460	TEFC	
75	1	230/460	ODP	
10	3	230/460	TEFC	
10	1	230/460	ODP	
15	3	230/460	TEFC	

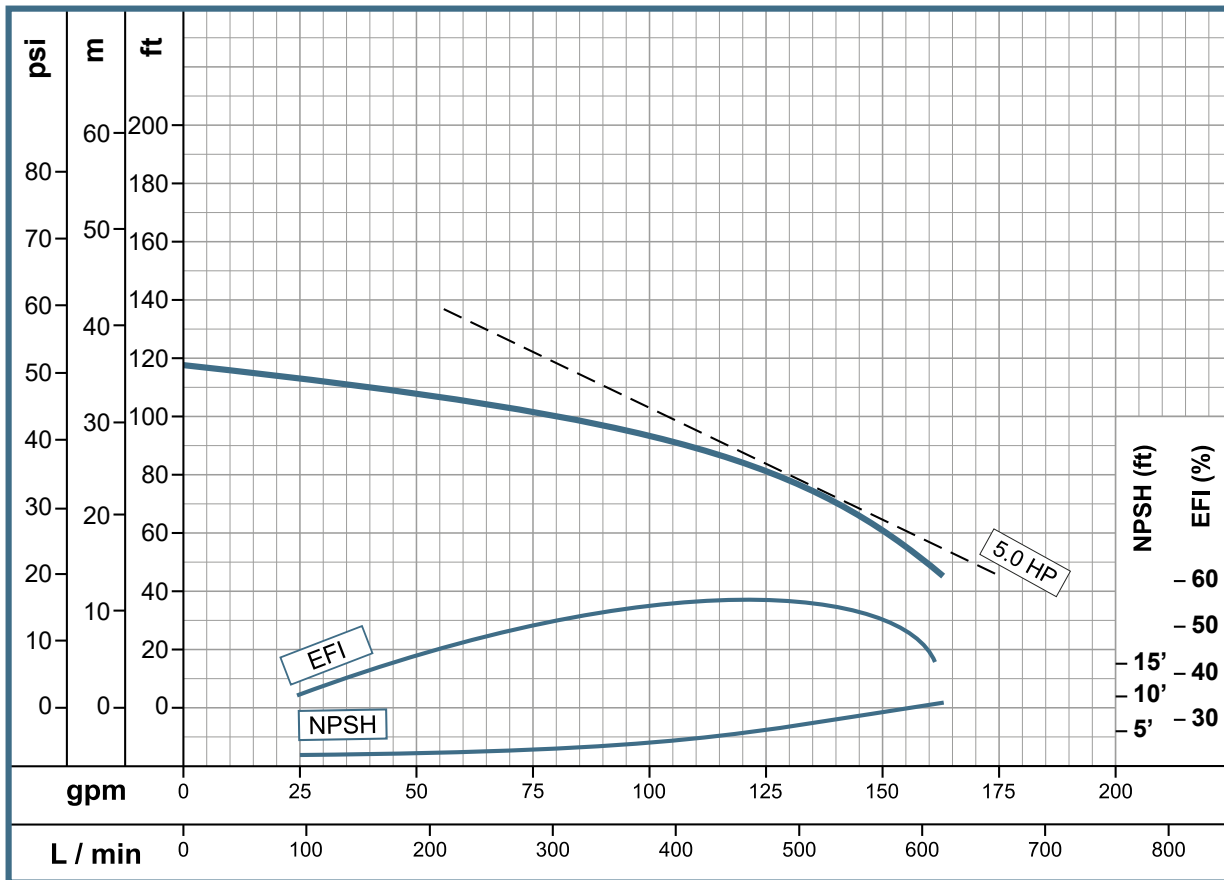
Performance Curve



Pump Features					
Pump Type		Design		Impeller	
Centrifuge		Close Coupled		Enclosed	
Stages		Mechanical Seal		Fluid temperature	
1		1-1/4" T01		158° F (70° C)	
Model	Reference	Ø Suction	Ø Discharge	Ø Impeller	
1	QE 3 50	1E0586	3" NPT	3" NPT	6.000"
2	QE 3 50-1 TC	1E0679TC	3" NPT	3" NPT	6.000"

Motor Features			
Drive		Speed (RPM)	Frequency (Hz)
Electric		3600	60
Power (hp)	Phases	Voltage (V)	Enclosure
50	3	230/460	TEFC
50	1	230/460	TEFC

Performance Curve



High Pressure Line

QE 3 200

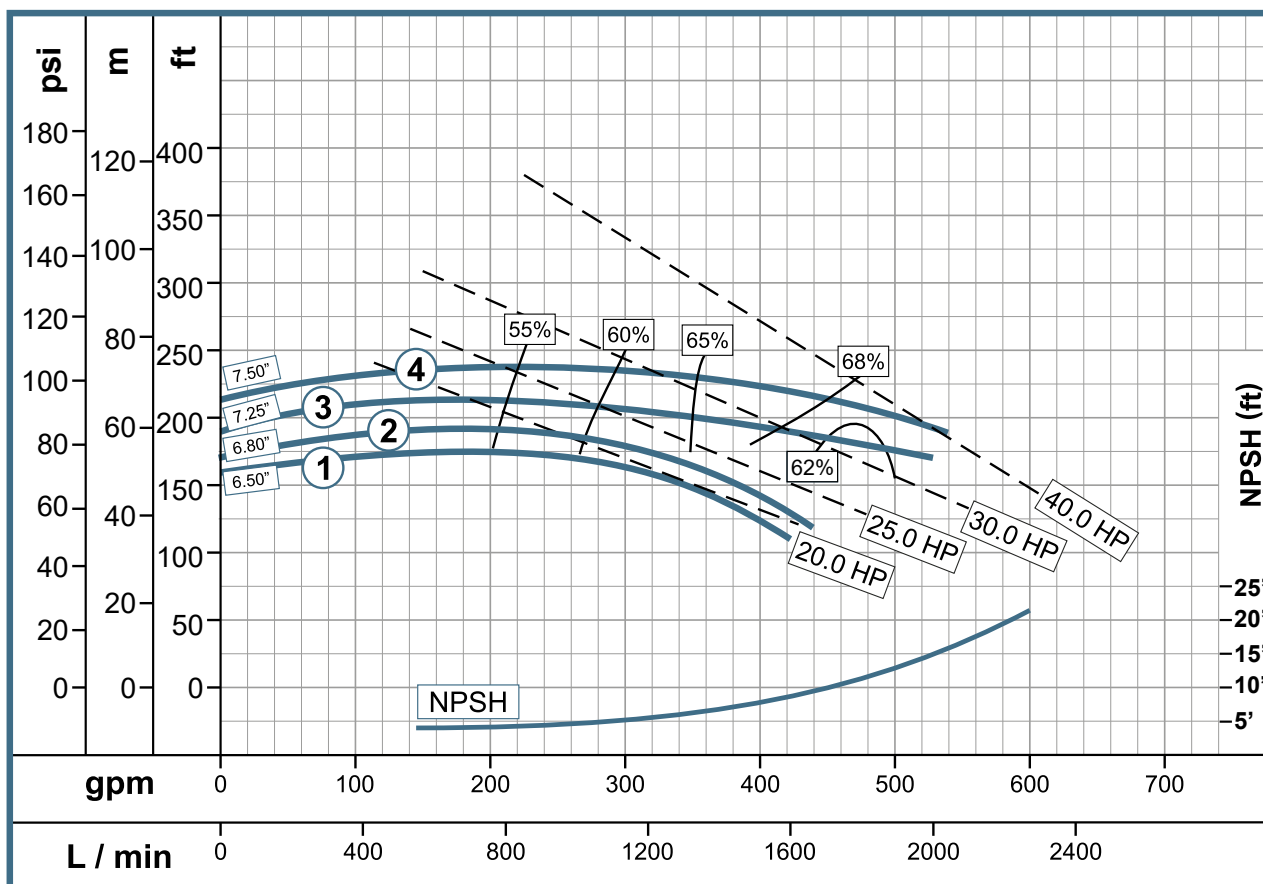


www.wdmpumps.com

Pump Features					
Pump Type	Design		Impeller		
Centrifuge	Close Coupled		Enclosed		
Stages	Mechanical Seal		Fluid temperature		
1	1-1/2" T01		158° F (70° C)		
Model	Reference	Ø Suction	Ø Discharge	Ø Impeller	
1	QE 3 200 (B)	1E0596	4"B	3"B	6.500"
2	QE 3 250 (B)	1E0597P	4"B	3"B	6.800"
3	QE 3 300 (B)	1E0598	4"B	3"B	7.250"
4	QE 3 400 (B)	1E0599	4"B	3"B	7.500"

Motor Features			
Drive		Speed (RPM)	Frequency (Hz)
Electric		3600	60
Power (hp)	Phases	Voltage (V)	Enclosure
20	3	230/460	TEFC
25	3	230/460	TEFC
30	3	230/460	TEFC
40	3	230/460	TEFC

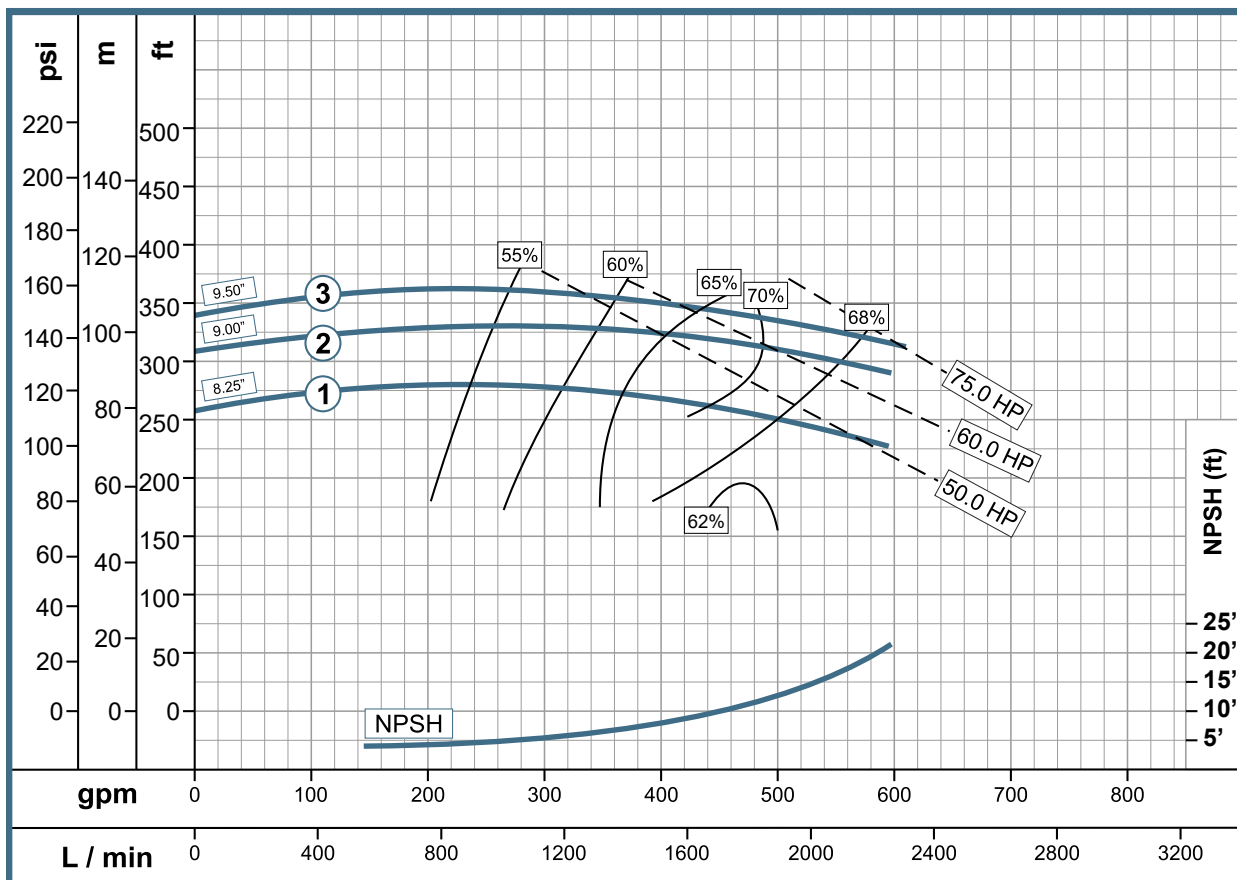
Performance Curve



Pump Features					
Pump Type	Design		Impeller		
Centrifuge	Close Coupled		Enclosed		
Stages	Mechanical Seal		Fluid temperature		
1	1-1/2" T01		158° F (70° C)		
Model	Reference	Ø Suction	Ø Discharge	Ø Impeller	
1	QE 3 500 (B)	1E0600	4"B	3"B	8.250"
2	QE 3 600 (B)	1E0601	4"B	3"B	9.000"
3	QE 3 750 (B)	1E0602	4"B	3"B	9.500"

Motor Features			
Drive		Speed (RPM)	Frequency (Hz)
Electric		3600	60
Power (hp)	Phases	Voltage (V)	Enclosure
50	3	230/460	TEFC
60	3	230/460	TEFC
75	3	230/460	TEFC

Performance Curve



High Pressure Line

KE 3

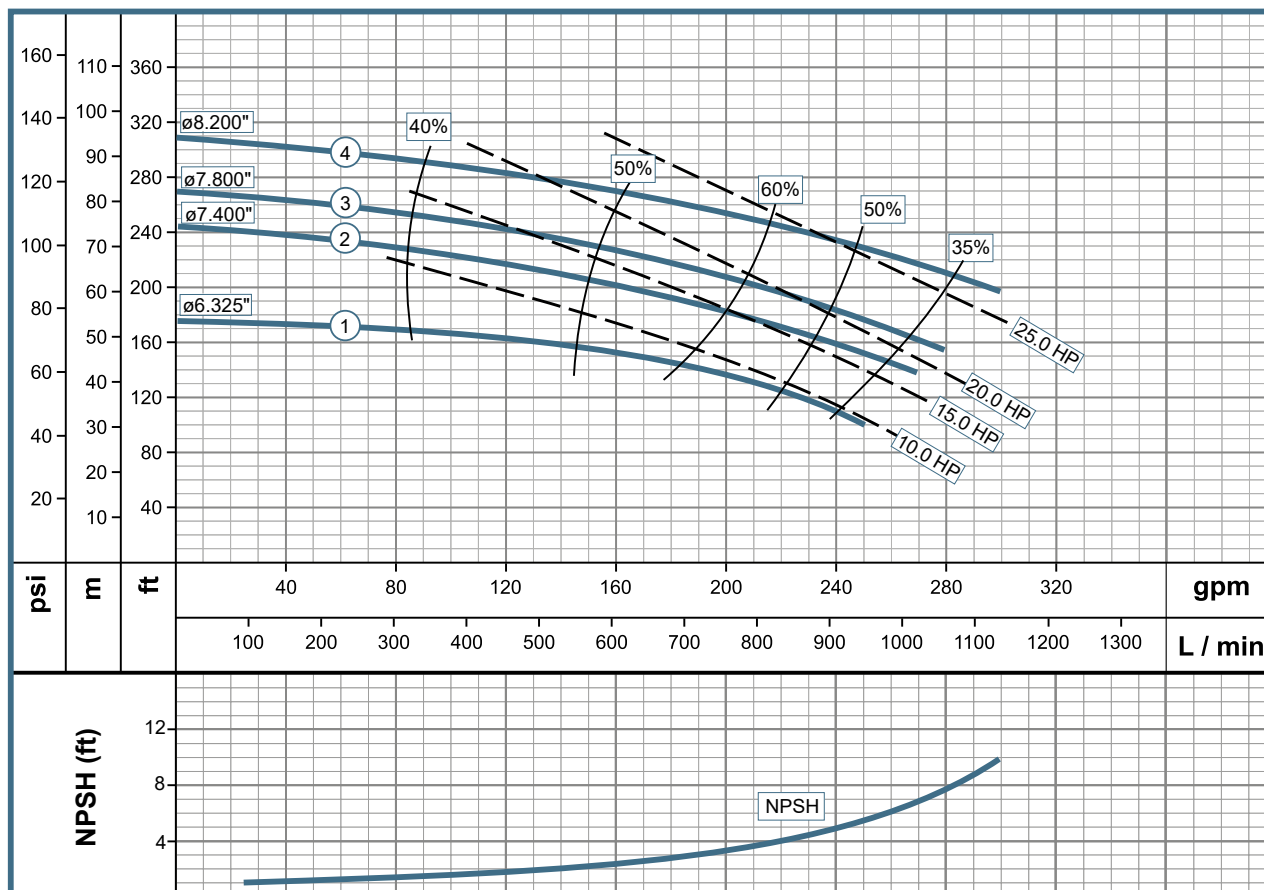


www.wdmpumps.com

Pump Features					
Pump Type	Design		Impeller		
Centrifuge	Close Coupled		Enclosed		
Stages	Mechanical Seal		Fluid temperature		
1	1-1/2" T01		158° F (70° C)		
Model	Reference	Ø Suction	Ø Discharge	Ø Impeller	
1	KE 3 100	1E0533	3" NPT	3" NPT	6.325"
2	KE 3 150	1E0534P	3" NPT	3" NPT	7.400"
3	KE 3 200	1E0587	3" NPT	3" NPT	7.800"
4	KE 3 250	1E0535P	3" NPT	3" NPT	8.200"

Motor Features				
Drive		Speed (RPM)	Frequency (Hz)	
Electric		3600	60	
Power (hp)	Phases	Voltage (V)	Enclosure	
10	3	230/460	TEFC	
15	3	230/460	TEFC	
20	3	230/460	TEFC	
25	3	230/460	TEFC	

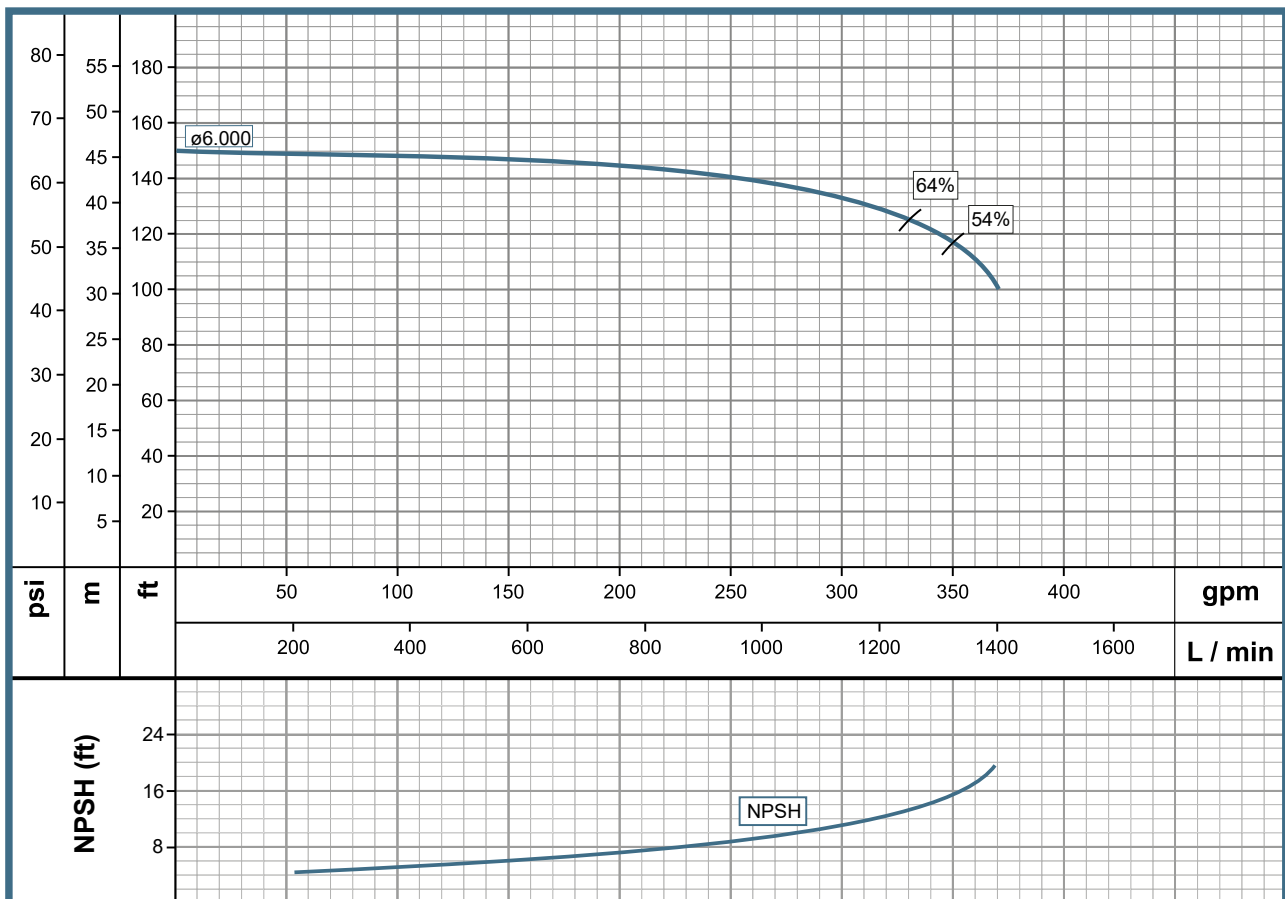
Performance Curve



Pump Features					
Pump Type		Design		Impeller	
Centrifuge		Close Coupled		Enclosed	
Stages		Mechanical Seal		Fluid temperature	
1		1-1/4" T01		158° F (70° C) Continuous	
Model		Reference	Ø Suction	Ø Discharge	Ø Impeller
1 QFE 3 150		1E0076	3" NPT	3" NPT	6.000"

Motor Features			
Drive		Speed (RPM)	Frequency (Hz)
Electric		3600	60
Power (hp)	Phases	Voltage (V)	Enclosure
15	3	230/460	TEFC

Performance Curve



High Pressure Line

QE 4 (B)

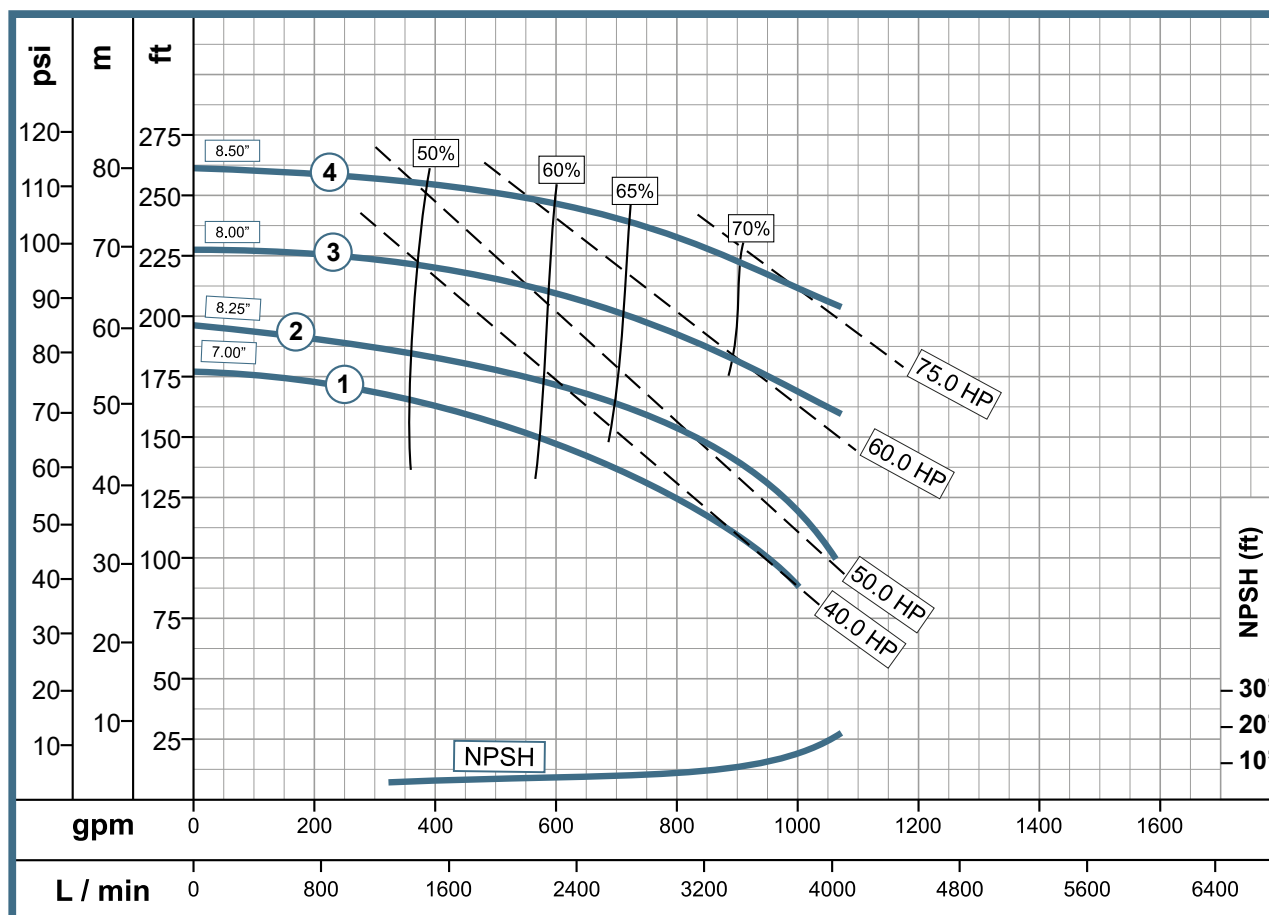


www.wdmpumps.com

Pump Features					
Pump Type	Design		Impeller		
Centrifuge	Close Coupled		Enclosed		
Stages	Mechanical Seal		Fluid temperature		
1	1-1/2" T01		158° F (70° C)		
Model	Reference	Ø Suction	Ø Discharge	Ø Impeller	
1	QE 4 400 (B)	1E0603	5"B	4"B	7.000"
2	QE 4 500 (B)	1E0604	5"B	4"B	7.250"
3	QE 4 600 (B)	1E0605	5"B	4"B	8.000"
4	QE 4 750 (B)	1E0606	5"B	4"B	8.500"

Motor Features			
Drive		Speed (RPM)	Frequency (Hz)
Electric		3600	60
Power (hp)	Phases	Voltage (V)	Enclosure
40	3	230/460	TEFC
50	3	230/460	TEFC
60	3	230/460	TEFC
75	3	230/460	TEFC

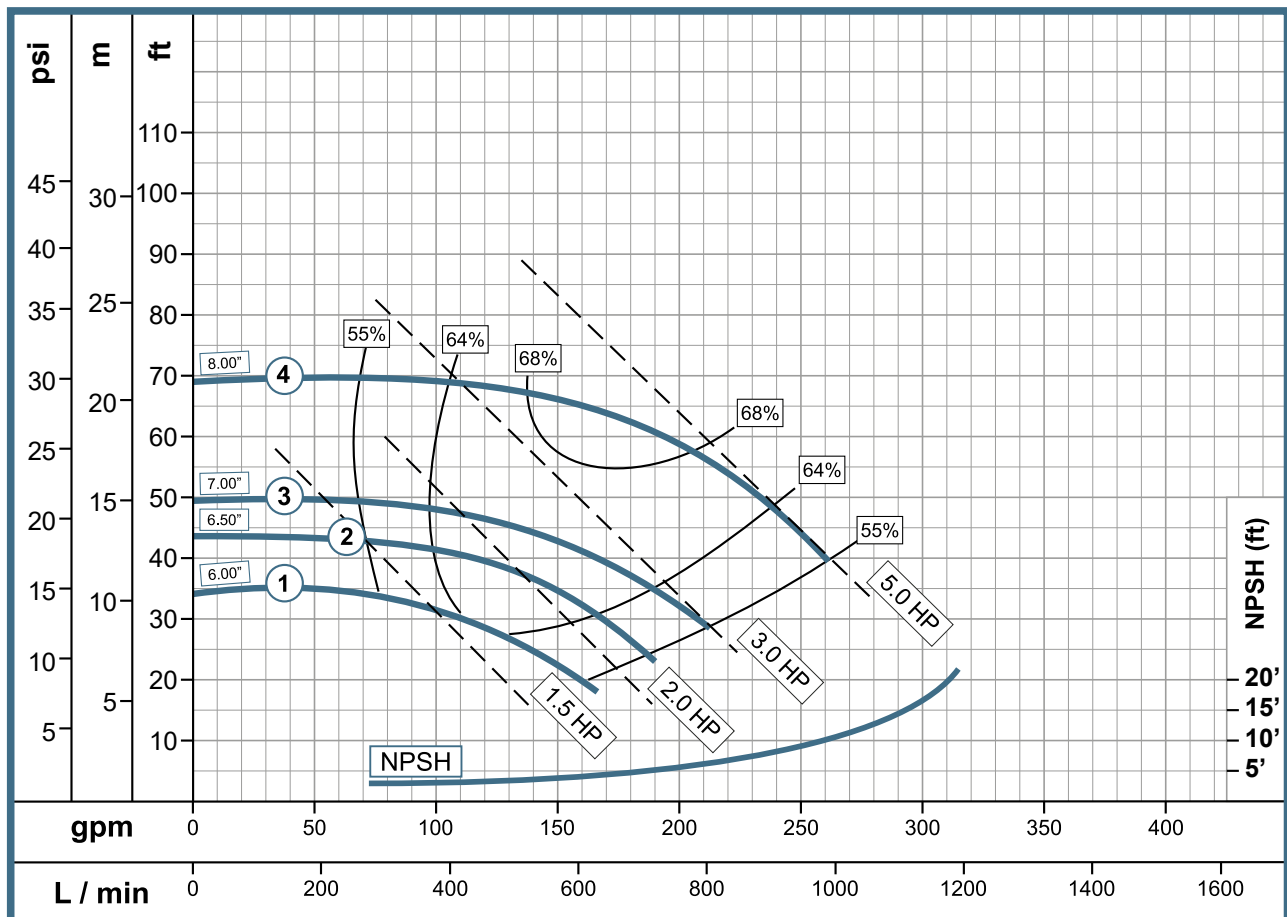
Performance Curve



Pump Features					
Pump Type	Design		Impeller		
Centrifuge	Close Coupled		Enclosed		
Stages	Mechanical Seal		Fluid temperature		
1	1-1/4" T01		158° F (70° C)		
Model	Reference	Ø Suction	Ø Discharge	Ø Impeller	
1	QE 2 15-4	1E0607	2.5"B	2"B	6.000"
2	QE 2 20-4	1E0608	2.5"B	2"B	6.500"
3	QE 2 30-4	1E0609	2.5"B	2"B	7.000"
4	QE 2 50-4	1E0610	2.5"B	2"B	8.000"

Motor Features			
Drive		Speed (RPM)	Frequency (Hz)
Electric		3600	60
Power (hp)	Phases	Voltage (V)	Enclosure
1,5	3	230/460	TEFC
2	3	230/460	TEFC
3	3	230/460	TEFC
4	3	230/460	TEFC

Performance Curve



High Pressure Line

QE 2.5-4

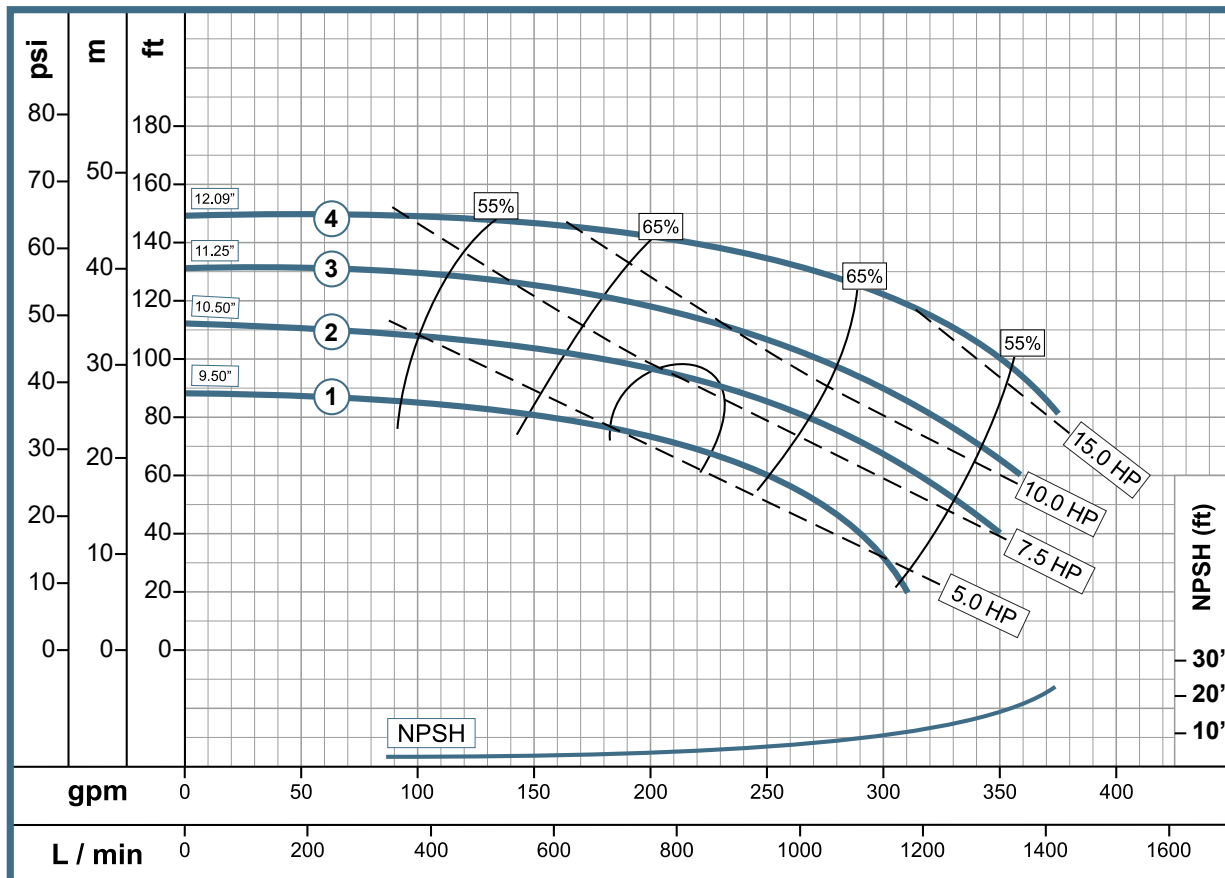


www.wdmpumps.com

Pump Features					
Pump Type	Design		Impeller		
Centrifuge	Close Coupled		Enclosed		
Stages	Mechanical Seal		Fluid temperature		
1	1 1/2" T01		158° F (70° C)		
Model	Reference	Ø Suction	Ø Discharge	Ø Impeller	
1	QE 2.5 50-4	1E0611	3"B	2.5"B	9.500"
2	QE 2.5 75-4	1E0612	3"B	2.5"B	10.500"
3	QE 2.5 100-4	1E0613	3"B	2.5"B	11.250"
4	QE 2.5 150-4	1E0614	3"B	2.5"B	12.093"

Motor Features			
Drive		Speed (RPM)	Frequency (Hz)
Electric		1.750	60
Power (hp)	Phases	Voltage (V)	Enclosure
5	3	230/460	TEFC
7.5	3	230/460	TEFC
10	3	230/460	TEFC
15	3	230/460	TEFC

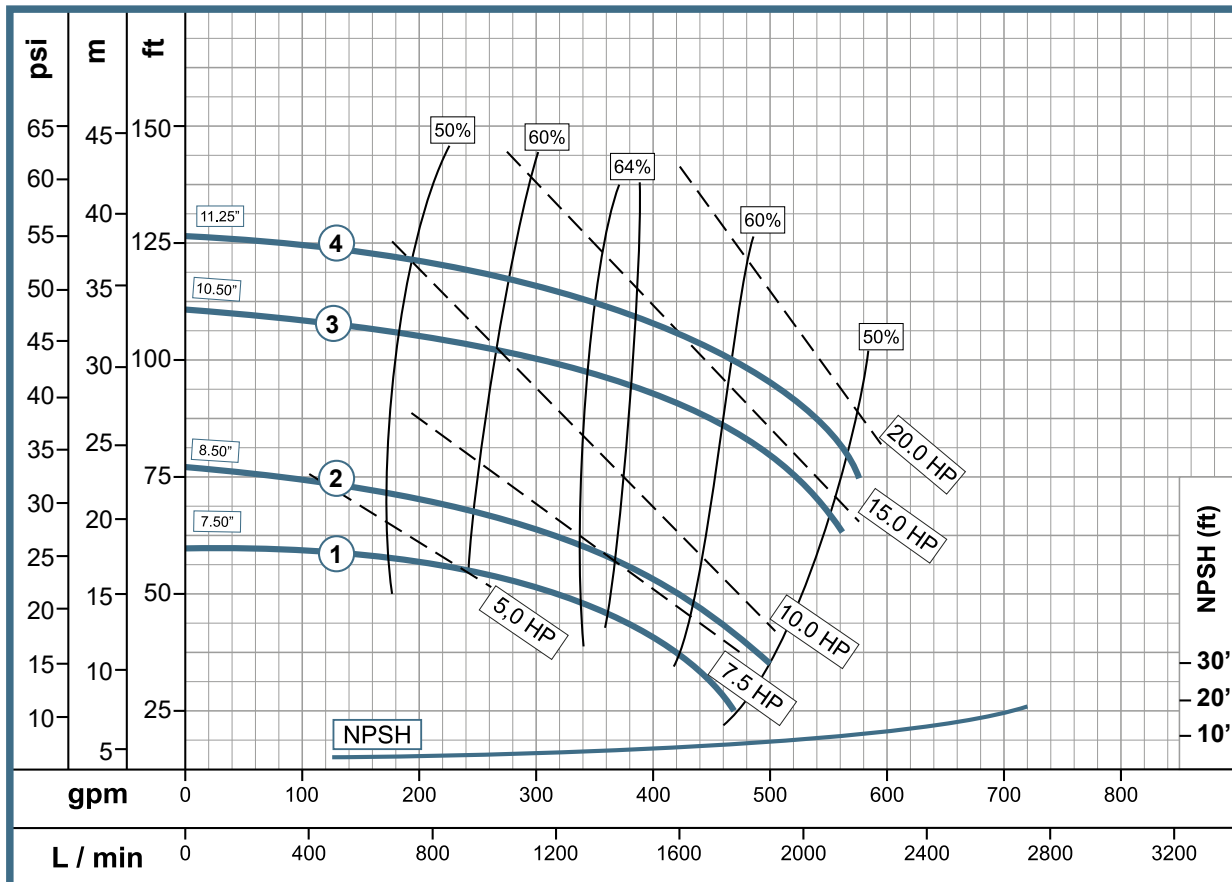
Performance Curve



Pump Features					
Pump Type	Design		Impeller		
Centrifuge	Close Coupled		Enclosed		
Stages	Mechanical Seal		Fluid temperature		
1	1 1/2" T01		158° F (70° C)		
Model	Reference	Ø Suction	Ø Discharge	Ø Impeller	
1	QE 3 75-4	1E0615	4"B	3"B	8.500"
2	QE 3 100-4	1E0616	4"B	3"B	9.500"
3	QE 3 150-4	1E0617	4"B	3"B	10.500"
4	QE 3 200-4	1E0618	4"B	3"B	12.093"

Motor Features			
Drive		Speed (RPM)	Frequency (Hz)
Electric		1750 (nominal)	60
Power (hp)	Phases	Voltage (V)	Enclosure
7,5	3	230/460	TEFC
10	3	230/460	TEFC
15	3	230/460	TEFC
20	3	230/460	TEFC

Performance Curve



High Pressure Line

QE 4 - 4

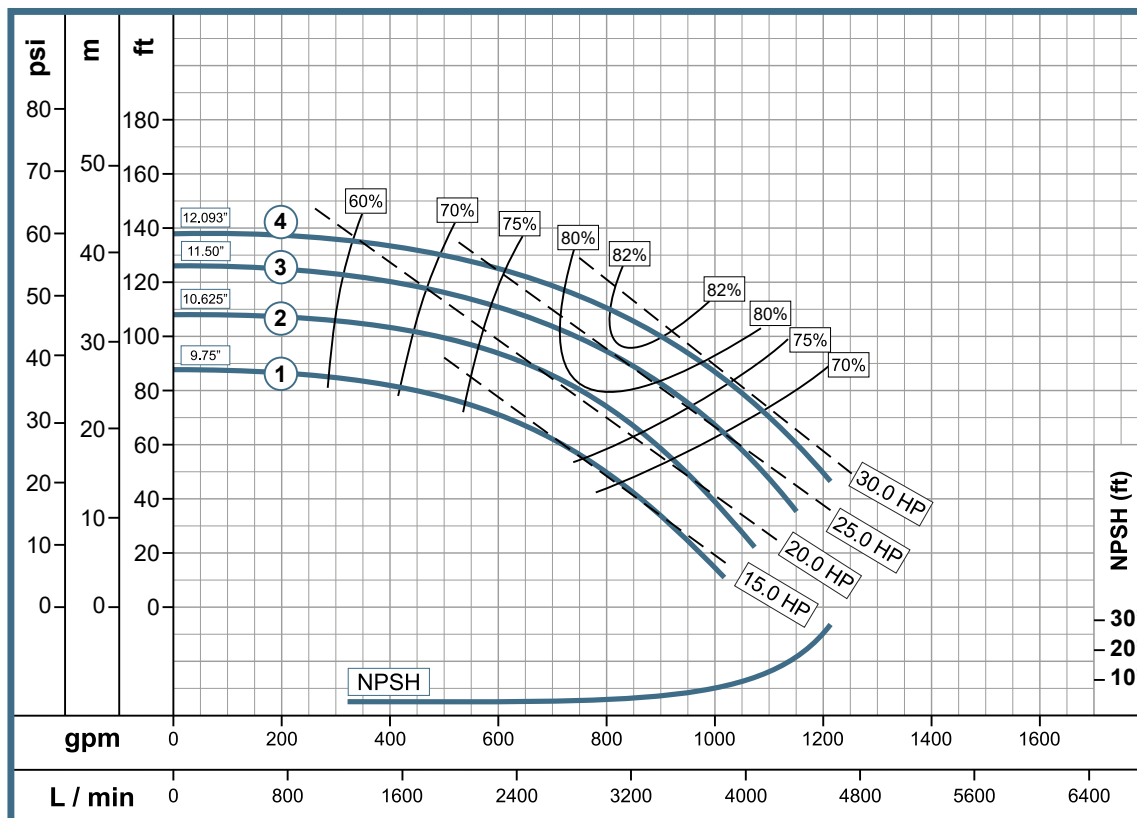


www.wdmpumps.com

Pump Features					
Pump Type	Design		Impeller		
Centrifuge	Close Coupled		Enclosed		
Stages	Mechanical Seal		Fluid temperature		
1	1 1/2" T01		158° F (70° C)		
Model	Reference	Ø Suction	Ø Discharge	Ø Impeller	
1	QE 4 150-4	1E0619	5"B	4"B	9.750"
2	QE 4 200-4	1E0620	5"B	4"B	10.625"
3	QE 4 250-4	1E0621	5"B	4"B	11.500"
4	QE 4 300-4	1E0622	5"B	4"B	12.093"

Motor Features			
Drive		Speed (RPM)	Frequency (Hz)
Electric		1.750	60
Power (hp)	Phases	Voltage (V)	Enclosure
15	3	230/460	TEFC
20	3	230/460	TEFC
15	3	230/460	TEFC
30	3	230/460	TEFC

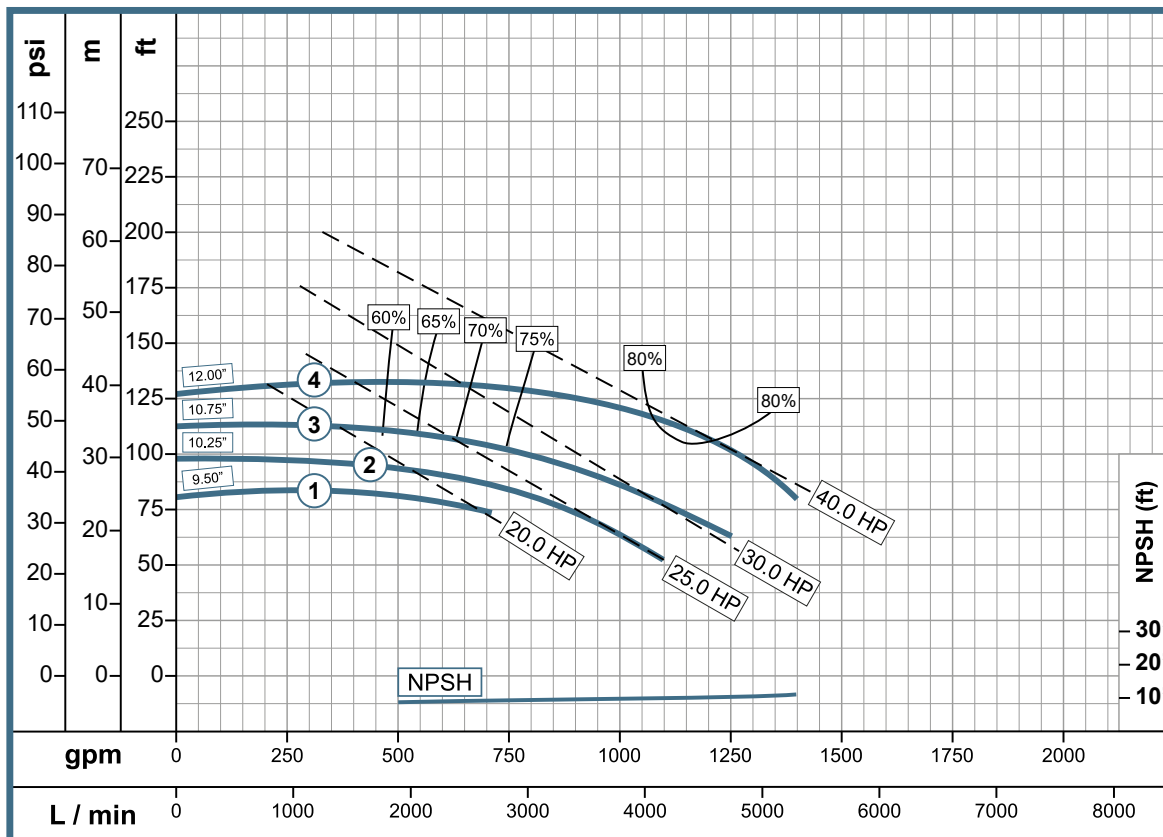
Performance Curve



Pump Features					
Pump Type	Design		Impeller		
Centrifuge	Close Coupled		Enclosed		
Stages	Mechanical Seal		Fluid temperature		
1	1-1/2" T01		158° F (70° C)		
Model	Reference	Ø Suction	Ø Discharge	Ø Impeller	
1	QE 6 200-4	1E0623	6"B	6"B	9.500"
2	QE 6 250-4	1E0624	6"B	6"B	10.250"
3	QE 6 300-4	1E0625	6"B	6"B	10.750"
4	QE 6 400-4	1E0626	6"B	6"B	12.000"

Motor Features			
Drive		Speed (RPM)	Frequency (Hz)
Electric		1.750	60
Power (hp)	Phases	Voltage (V)	Enclosure
20	3	230/460	TEFC
25	3	230/460	TEFC
30	3	230/460	TEFC
40	3	230/460	TEFC

Performance Curve



High Pressure Line

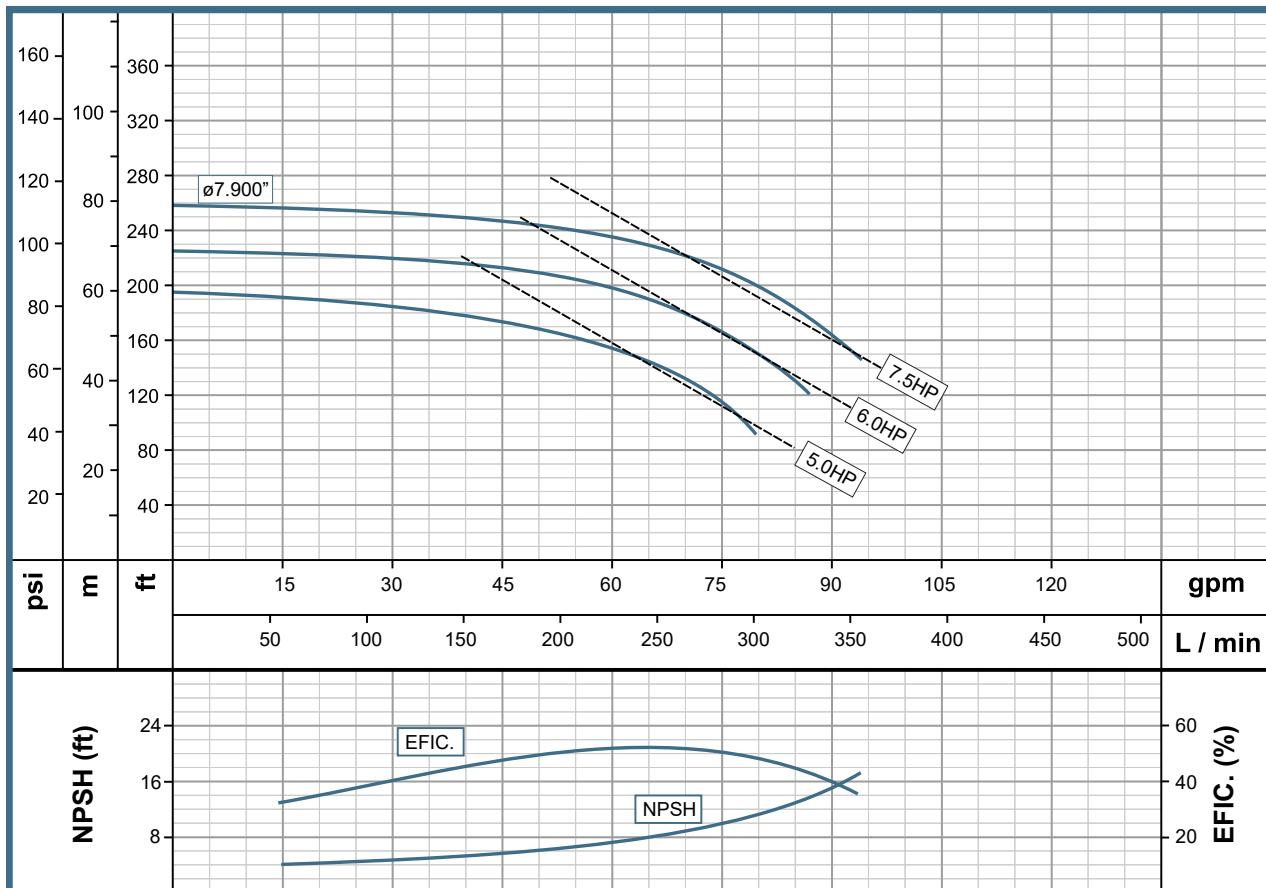
HU 1.5



www.wdmpumps.com

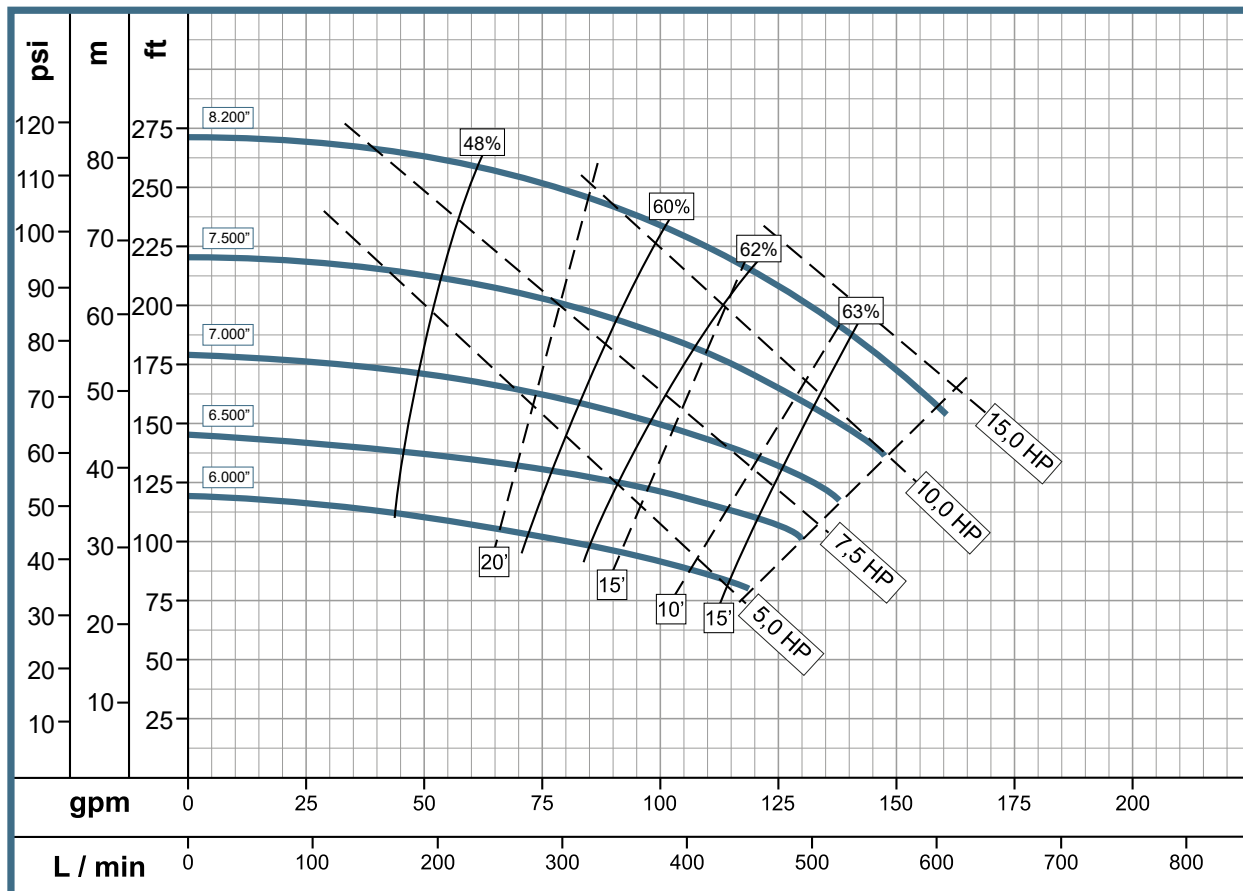
Pump Features					
Pump Type	Design		Impeller		
Centrifuge	Frame Mounted		Enclosed and balanced ISO G6.3		
Stages	Mechanical Seal		Fluid temperature		
1	1-1/4" T01		158° F (70° C)		
Model	Reference	Ø Suction	Ø Discharge	Ø Impeller	Speed
1 HU 1.5	1E0086	1-1/2" NPT	1-1/2" NPT	7.900"	3500 rpm

Performance Curve



Pump Features						
Pump Type	Design		Impeller			
Centrifuge	Frame Mounted		Enclosed and balanced ISO G6.3			
Stages	Mechanical Seal		Fluid temperature			
1	1-1/4" T01		158° F (70° C)			
Model	Reference	Ø Suction	Ø Discharge	Ø Impeller	Speed	
1	HU 2	1E0002	2" NPT	2" NPT	7.000"	3500 rpm

Performance Curve



High Pressure Line

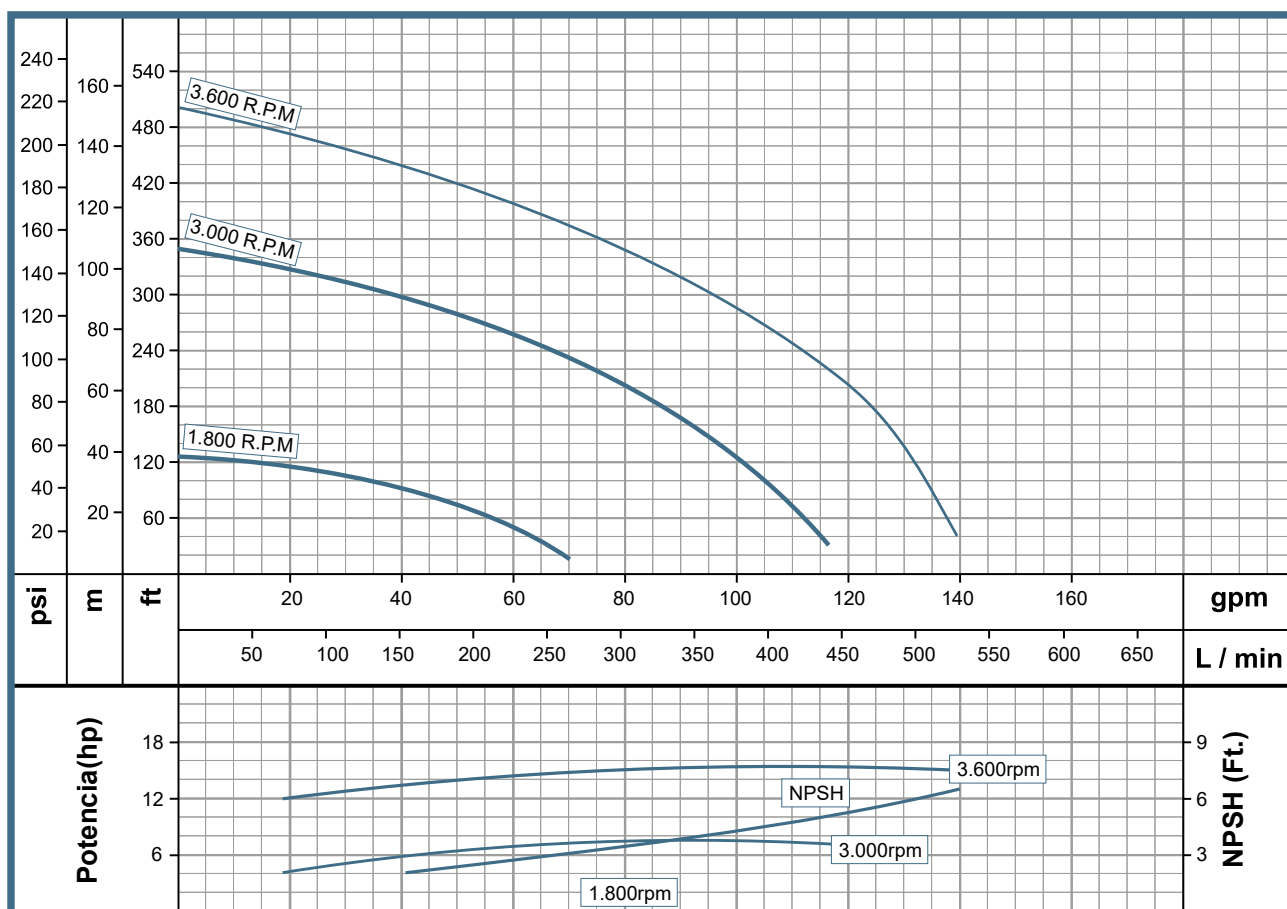
HU 2-2



www.wdmpumps.com

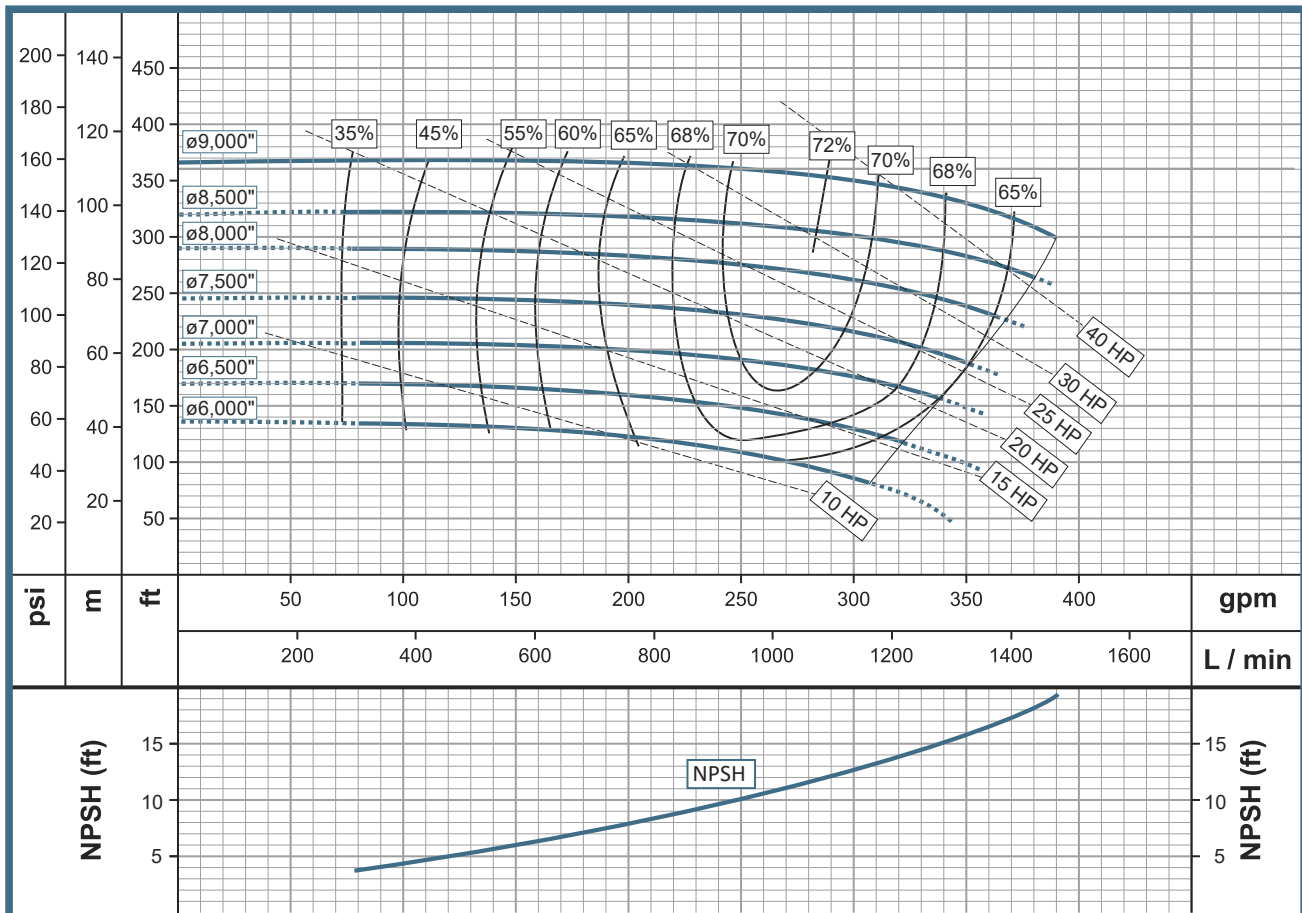
Pump Features						
Pump Type	Design		Impeller			
Centrifuge	Frame Mounted		Enclosed y balanceado ISO G6.3			
Stages	Mechanical Seal / Type		Fluid temperature			
2	1-1/4" Type 01		158° F (70° C)			
Model	Reference	Ø Suction	Ø Discharge	Ø Impeller	Speed	
1	HU 2-2	1E0494	2" NPT	2" NPT	7.800"	3600 rpm

Performance Curve



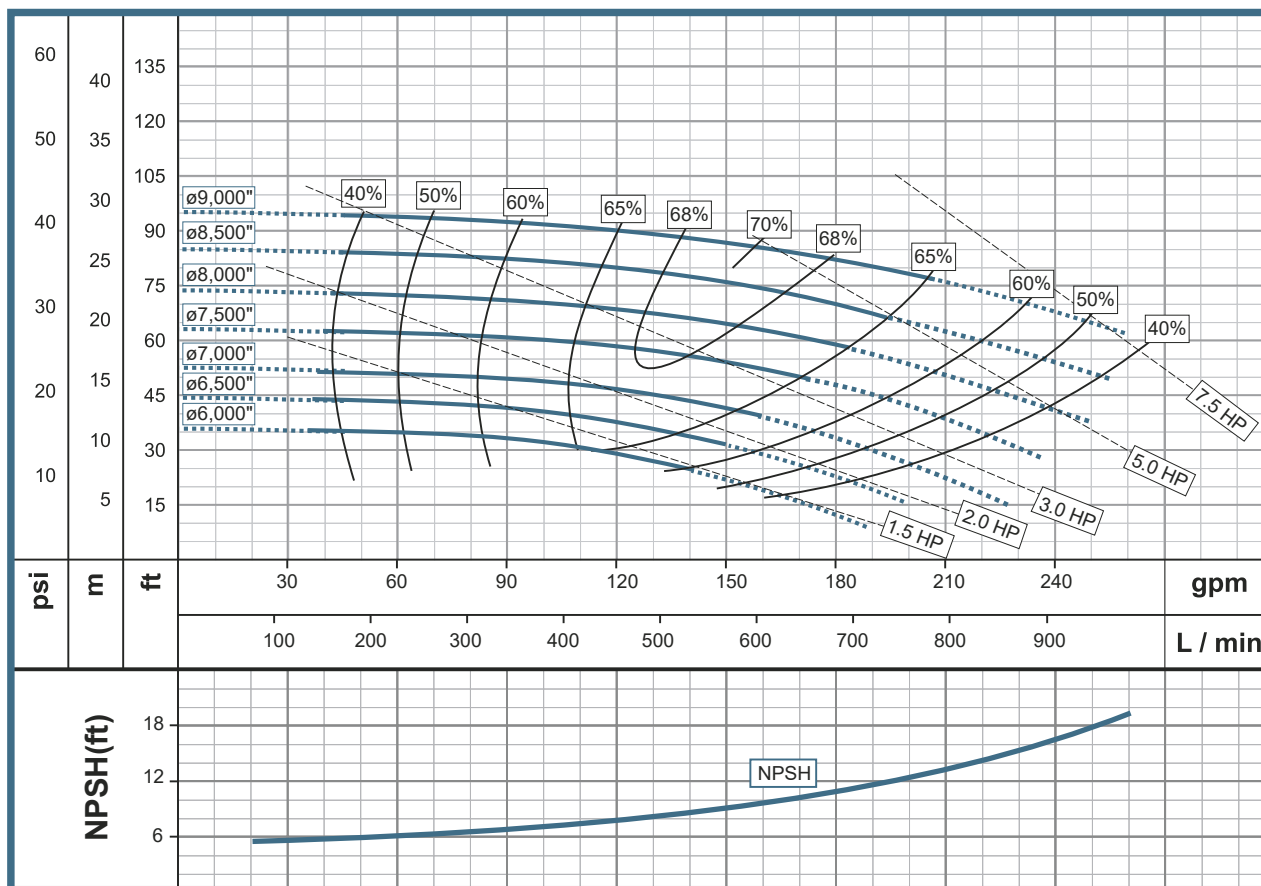
Pump Features						
Pump Type	Design		Impeller			
Centrifuge	Frame Mounted		Enclosed and balanced ISO G6.3			
Stages	Mechanical Seal		Fluid temperature			
1	1-1/4" T01		158° F (70° C)			
Model	Reference	Ø Suction	Ø Discharge	Ø Impeller	Speed	
1 QU 2	1E0025	2-1/2" NPT	2" NPT	8.500"	3500 rpm	

Performance Curve



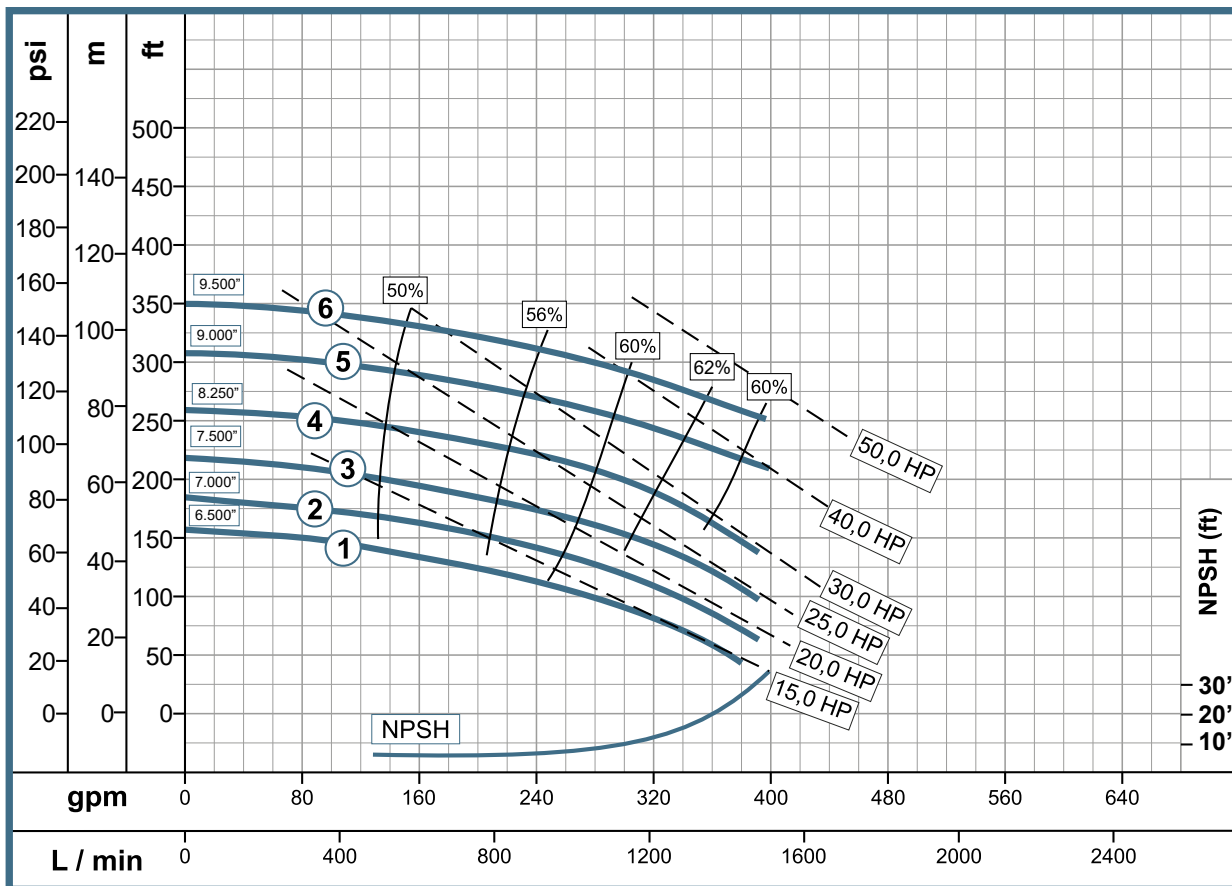
Pump Features						
Pump Type		Design		Impeller		
Centrifuge		Frame Mounted		Enclosed and balanced ISO G6.3		
Stages		Mechanical Seal / Type		Fluid temperature		
1		1-1/4" T01		158° F (70° C)		
Model	Reference	Ø Suction	Ø Discharge	Ø Impeller	Speed	
1	QU 2	1E0025	2-1/2" NPT	2" NPT	8.500"	1750 rpm

Performance Curve



Pump Features						
Pump Type		Design		Impeller		
Centrifuge		Frame Mounted		Enclosed and balanced ISO G6.3		
Stages		Mechanical Seal		Fluid temperature		
1		1-1/2" Type 01		158° F (70° C)		
Model	Reference	Ø Suction	Ø Discharge	Ø Impeller	Speed	
1	HU 2.5	1E0018	3" NPT	2 1/2" NPT	9.500"	3500 rpm

Performance Curve



High Pressure Line

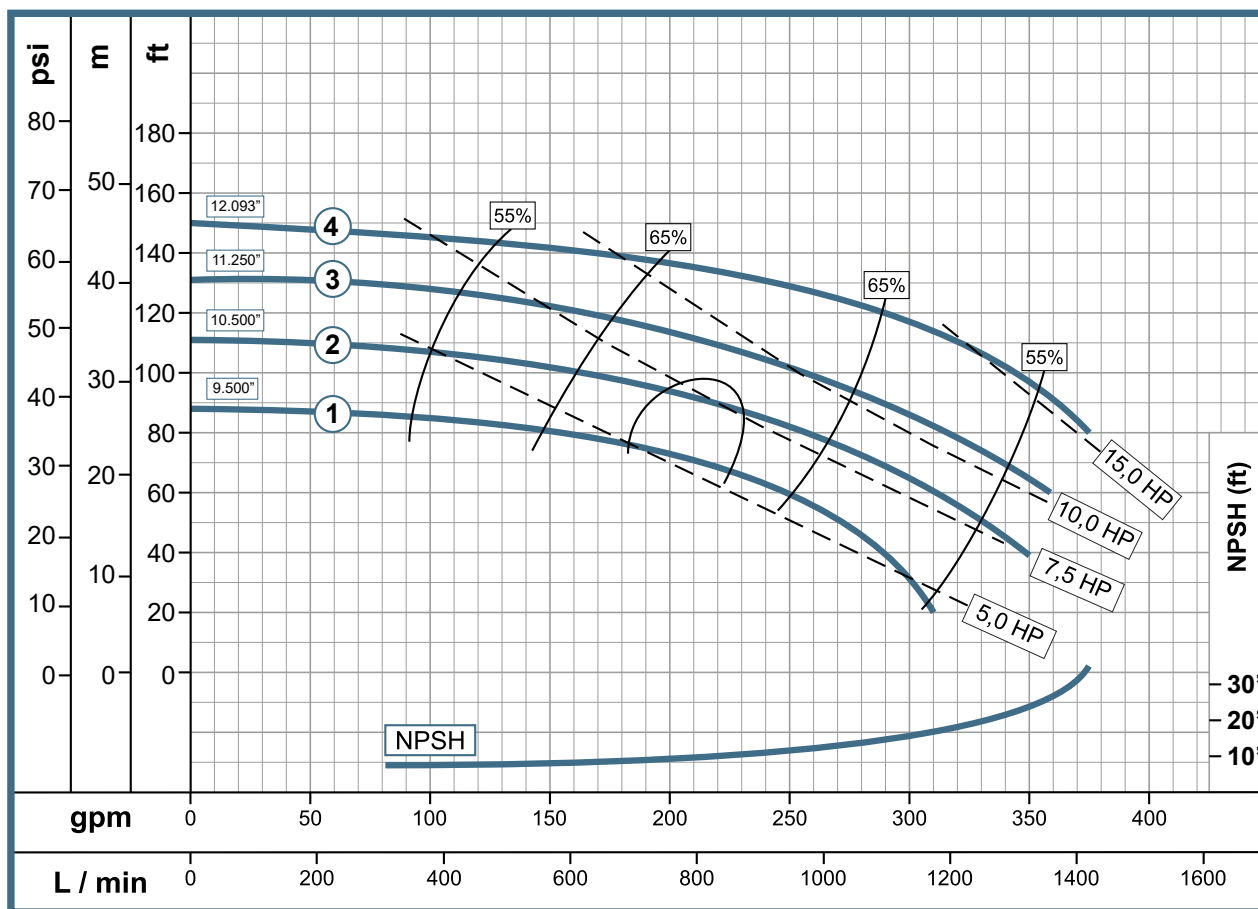
HU 2.5



www.wdmpumps.com

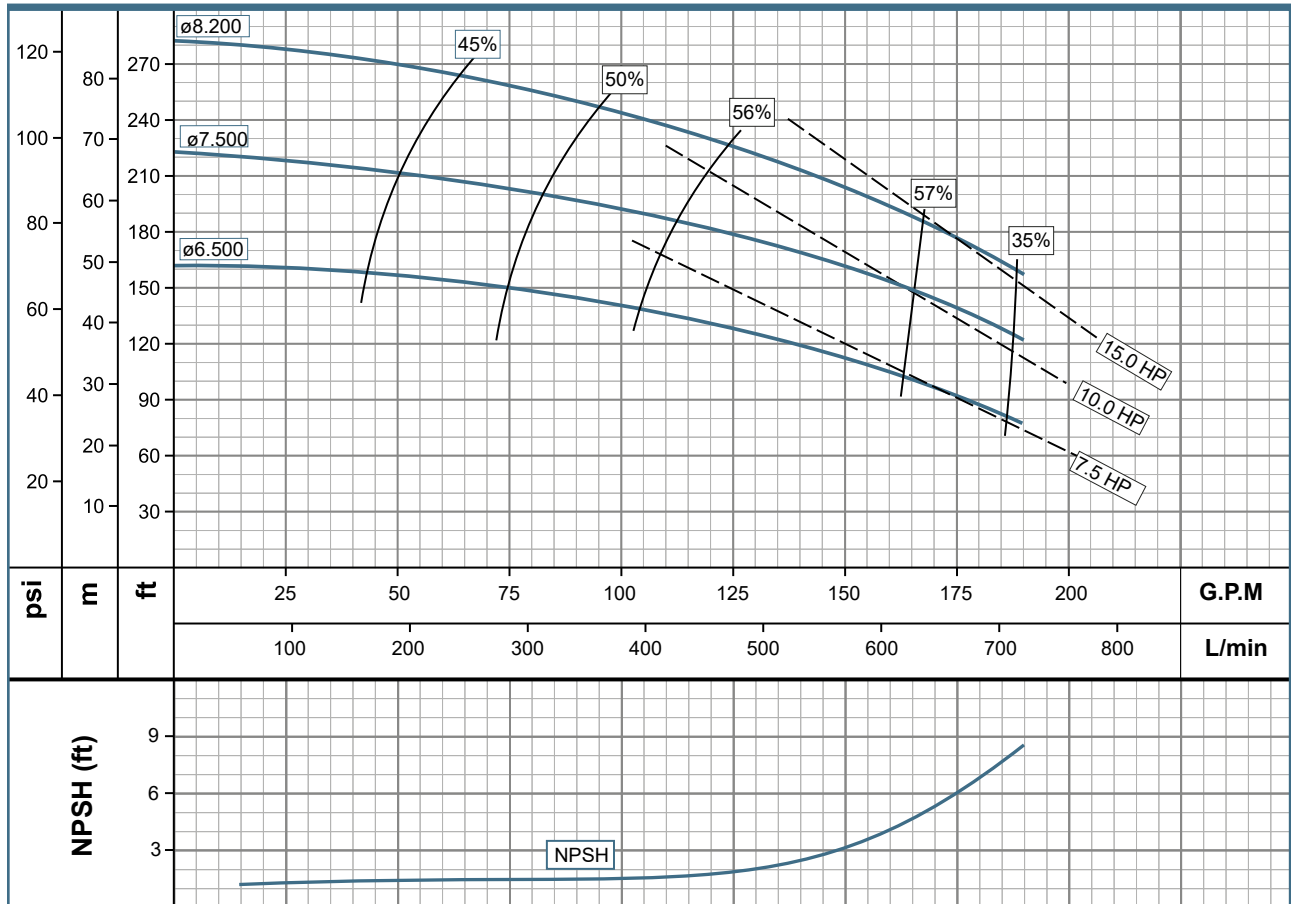
Pump Features					
Pump Type	Design		Impeller		
Centrifuge	Frame Mounted		Enclosed and balanced ISO G6.3		
Stages	Mechanical Seal		Fluid temperature		
1	1-1/2" Type 01		158° F (70° C)		
Model	Reference	Ø Suction	Ø Discharge	Ø Impeller	Speed
1 HU 2.5	1E0018	3" NPT	2 1/2" NPT	9.500"	1750 rpm

Performance Curve



Pump Features						
Pump Type	Design		Impeller			
Centrifuge	Frame Mounted		Enclosed and balanced ISO G6.3			
Stages	Mechanical Seal		Fluid temperature			
1	1-1/2" Type 01		158° F (70° C)			
Model	Reference	Ø Suction	Ø Discharge	Ø Impeller	Speed	
1	HU 3	1E0011	3" NPT	3" NPT	8.200"	3500 rpm

Performance Curve



High Pressure Line

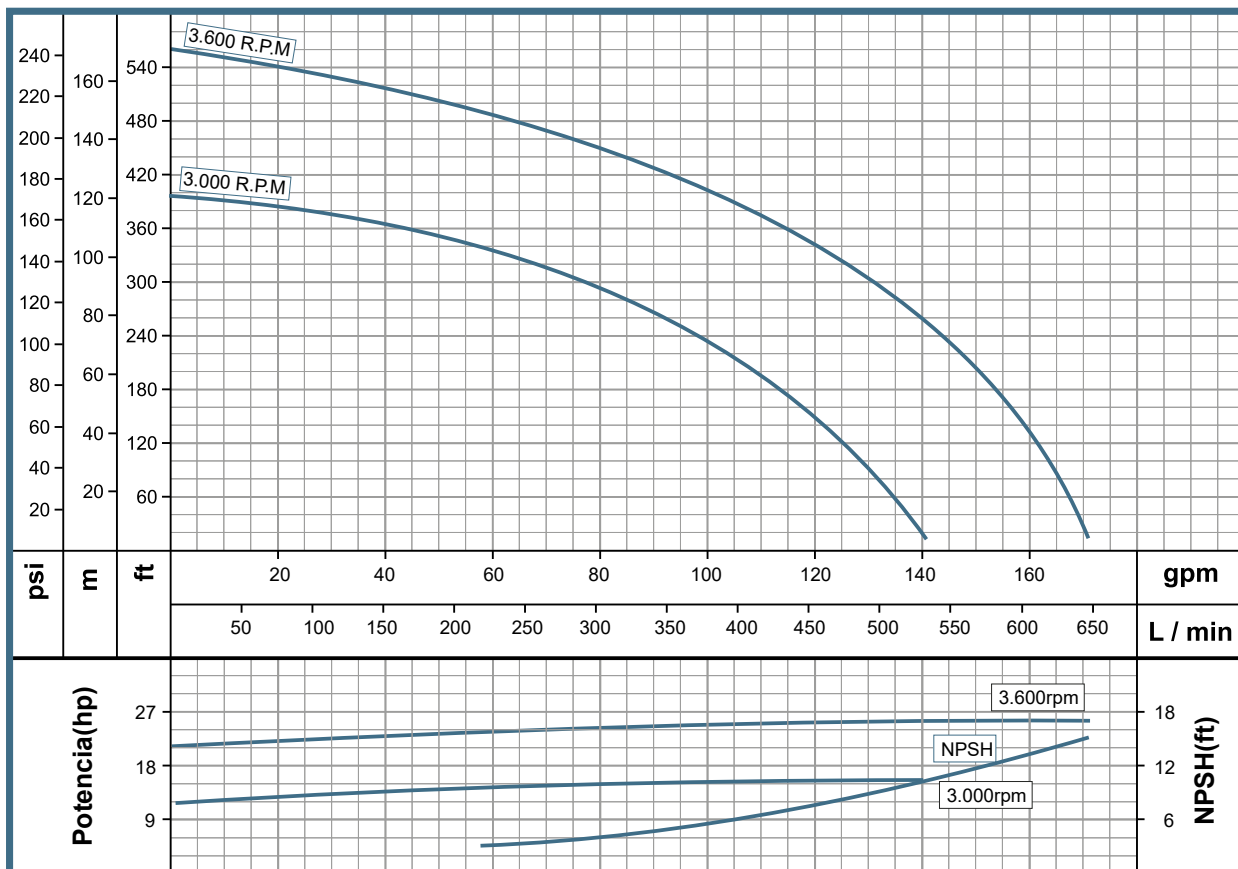
HU 3 - 2



www.wdmpumps.com

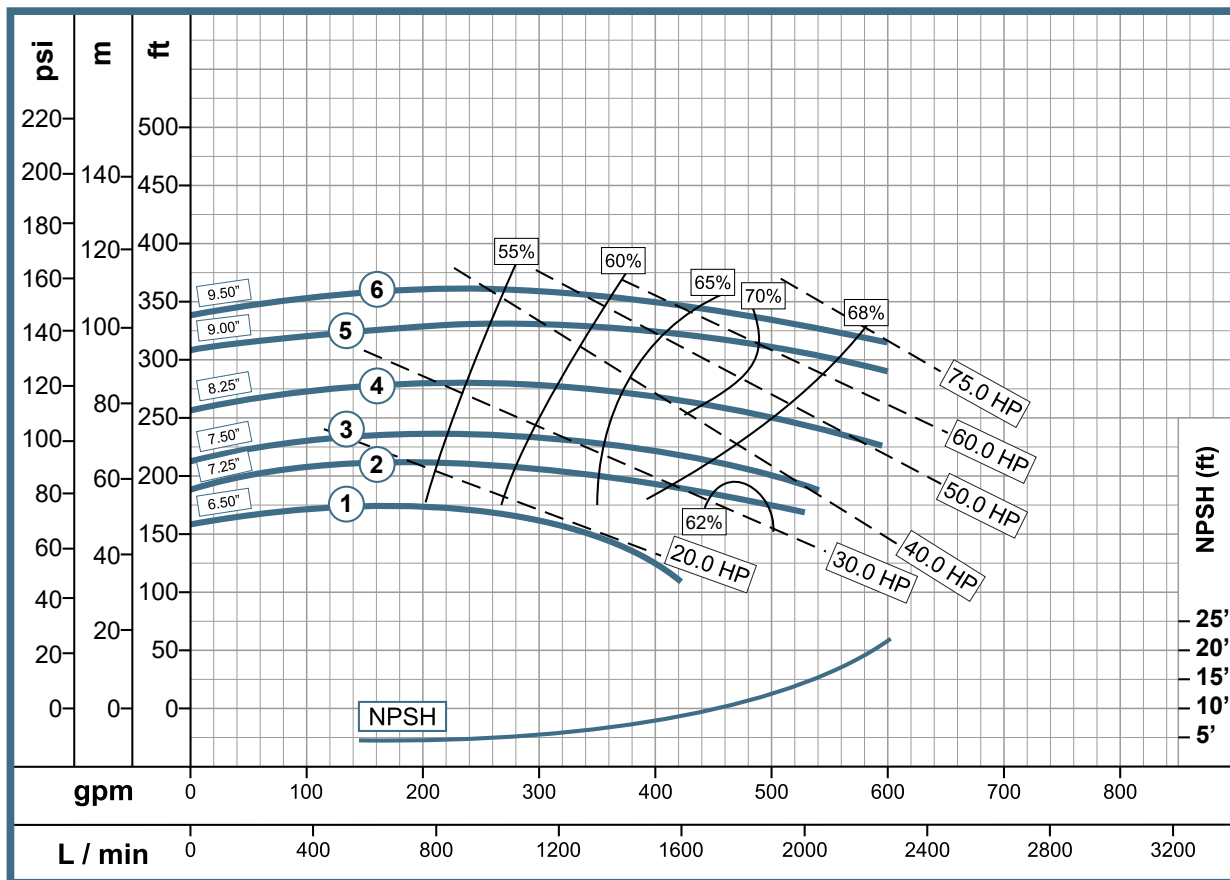
Pump Features						
Pump Type	Design		Impeller			
Centrifuge	Frame Mounted		Enclosed and balanced ISO G6.3			
Stages	Mechanical Seal		Fluid temperature			
2	1-1/2" Type 01		158° F (70° C)			
Model	Reference	Ø Suction	Ø Discharge	Ø Impeller	Speed	
1 HU 3-2	1E0495	3" NPT	3" NPT	8.500"	3500 rpm	

Performance Curve



Pump Features						
Pump Type	Design		Impeller			
Centrifuge	Frame Mounted		Enclosed and balanced ISO G6.3			
Stages	Mechanical Seal		Fluid temperature			
1	1-1/2" Type 01		158° F (70° C)			
Model	Reference	Ø Suction	Ø Discharge	Ø Impeller	Speed	
1 QU 3	1E0020	4" (B)	3" (B)	9.500"	3500 rpm	

Performance Curve



High Pressure Line

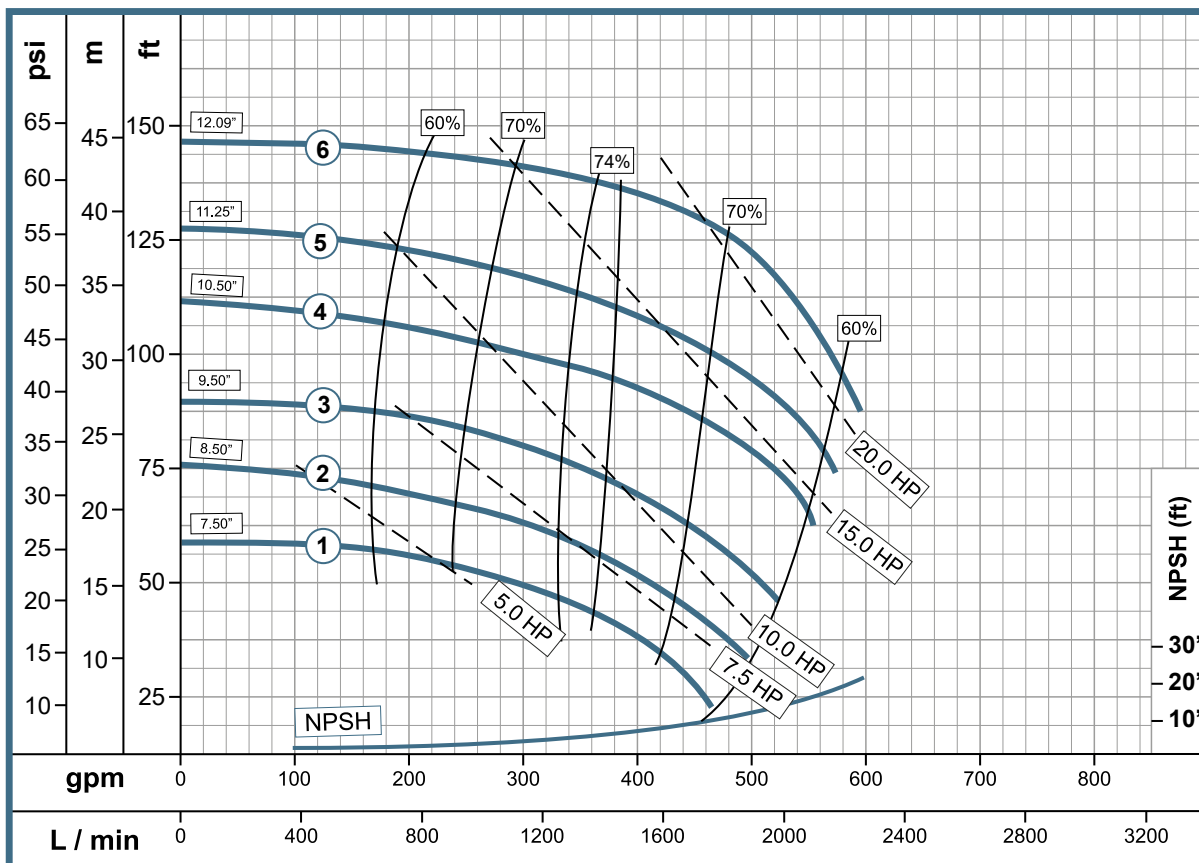
QU 3



www.wdmpumps.com

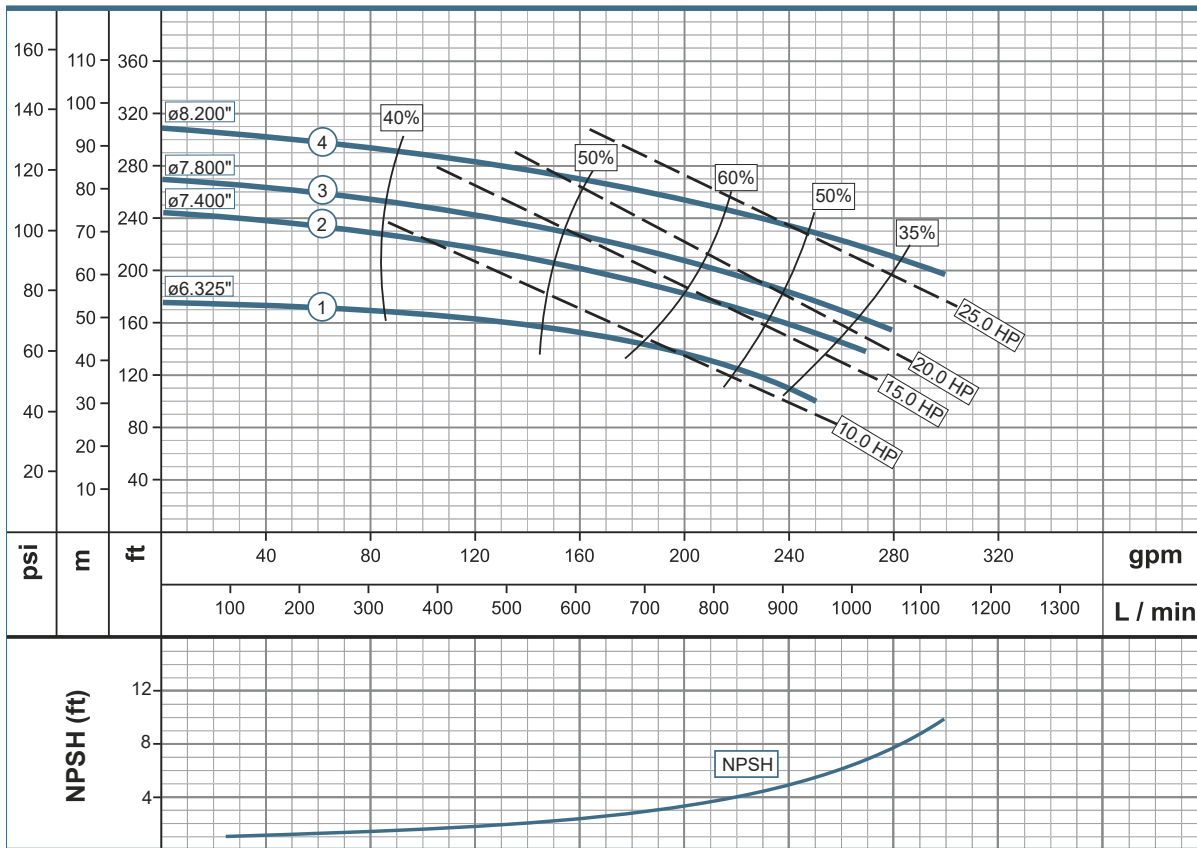
Pump Features						
Pump Type	Design		Impeller			
Centrifuge	Frame Mounted		Enclosed and balanced ISO G6.3			
Stages	Mechanical Seal		Fluid temperature			
1	1-1/2" Type 01		158° F (70° C)			
Model	Reference	Ø Suction	Ø Discharge	Ø Impeller	Speed	
1	QU 3	1E0020	4" (B)	3" (B)	12.090"	1750 rpm

Performance Curve



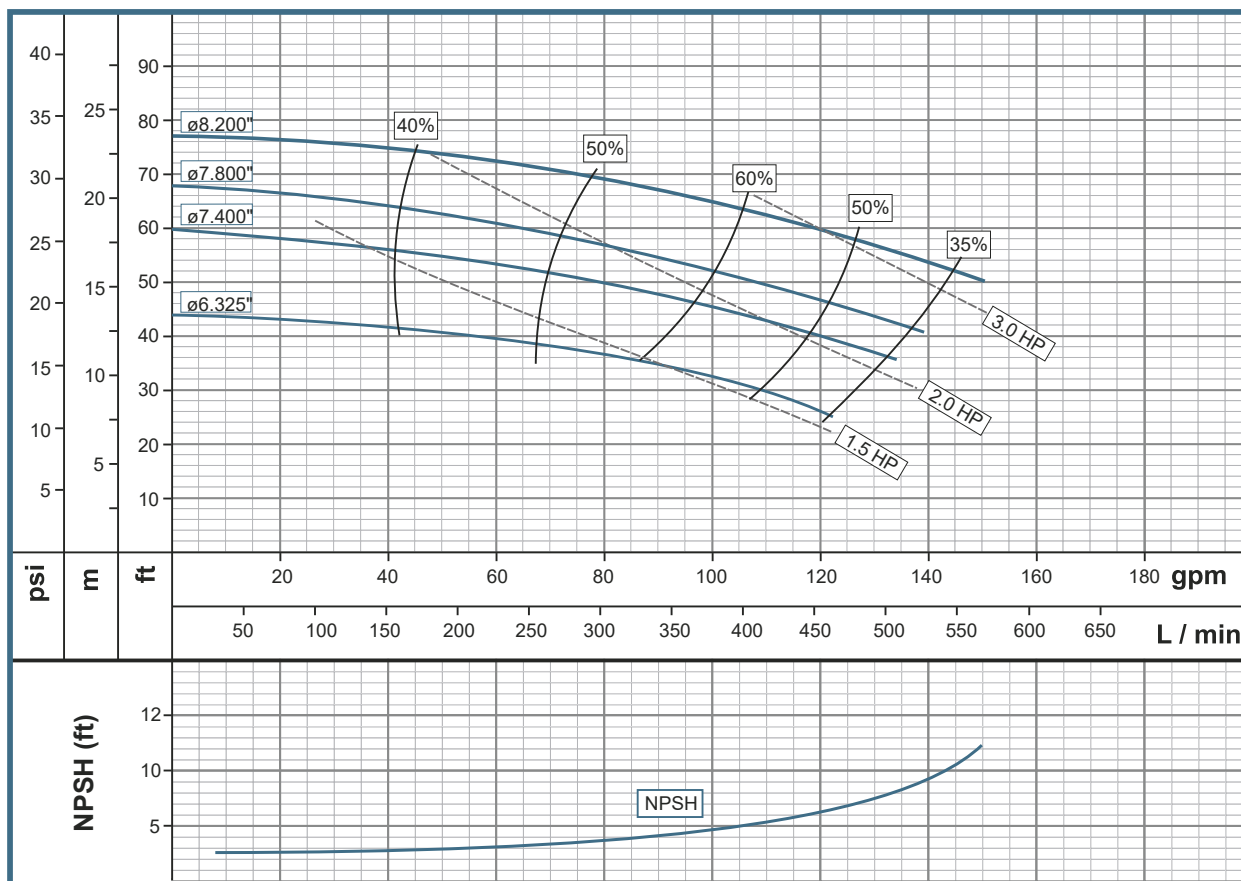
Pump Features						
Pump Type		Design		Impeller		
Centrifuge		Frame Mounted		Enclosed and balanced ISO G6.3		
Stages		Mechanical Seal		Fluid temperature		
1		1-1/4" Type 01		158° F (70° C)		
Model	Reference	Ø Suction	Ø Discharge	Ø Impeller	Speed	
1	KU 3	1E0119	3" NPT	3" NPT	8.200"	3500 rpm

Performance Curve



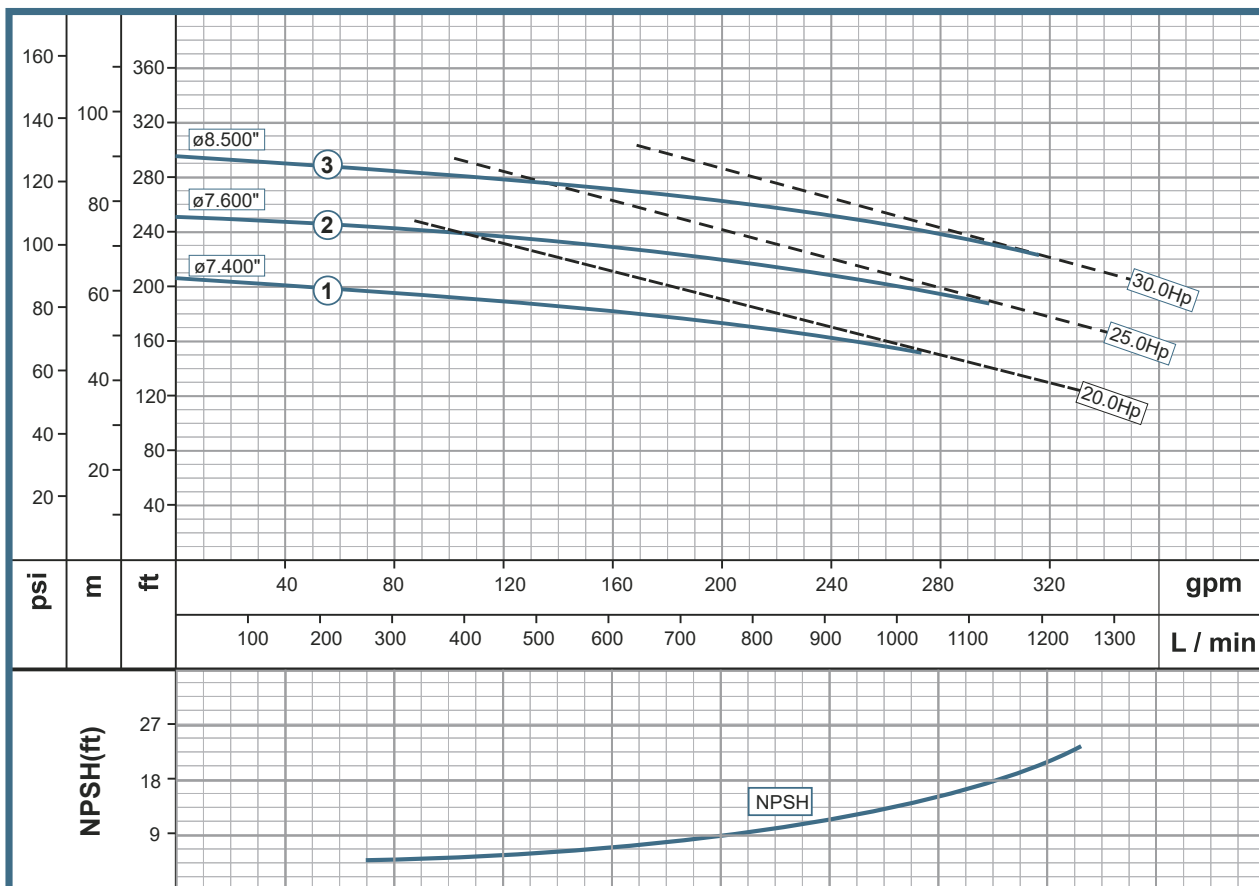
Pump Features					
Pump Type		Design		Impeller	
Centrifuge		Frame Mounted		Enclosed and balanced ISO G6.3	
Stages		Mechanical Seal		Fluid temperature	
1		1-1/4" Type 01		158° F (70° C)	
Model	Reference	Ø Suction	Ø Discharge	Ø Impeller	Speed
1	KU 3	1E0119	3" NPT	3" NPT	8.200" 1750 rpm

Performance Curve



Pump Features						
Pump Type		Design		Impeller		
Centrifuge		Frame Mounted		Enclosed and balanced ISO G6.3		
Stages		Mechanical Seal		Fluid temperature		
1		1-1/4" Type 01		158° F (70° C)		
Model	Reference	Ø Suction	Ø Discharge	Ø Impeller	Speed	
1	OU 3	1E0019	3" (B)	3" (B)	8.500"	3500 rpm

Performance Curve



High Pressure Line

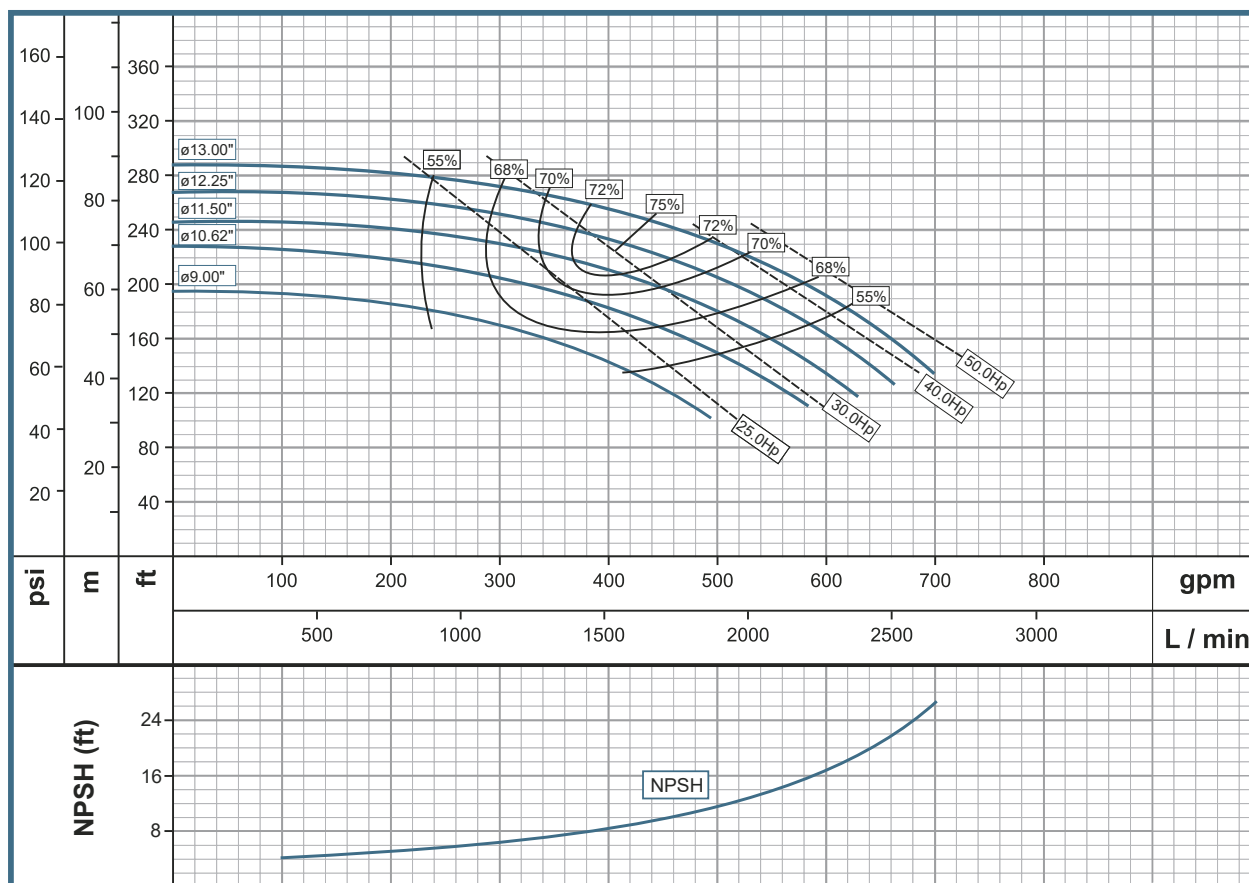
QU 4-2



www.wdmpumps.com

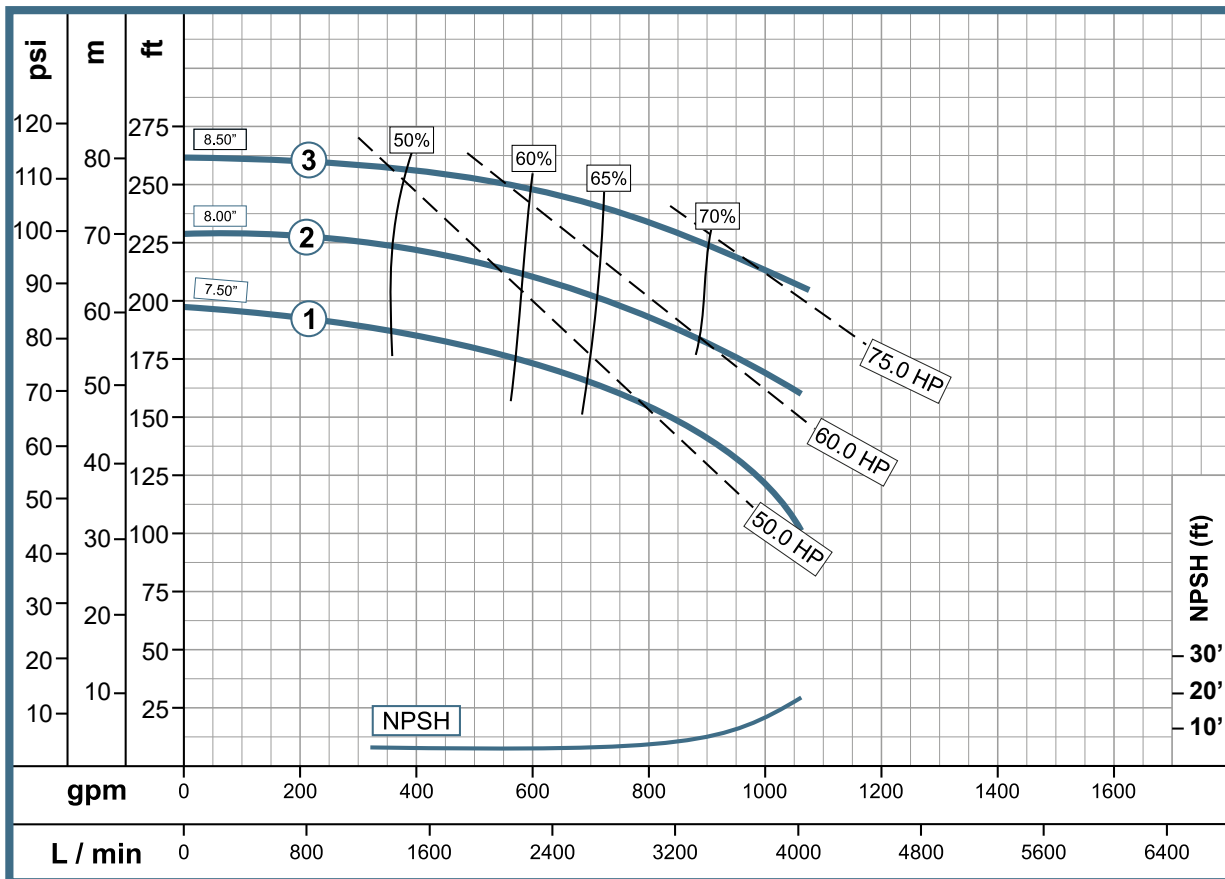
Pump Features						
Pump Type	Design		Impeller			
Centrifuge	Frame Mounted		Enclosed and balanced ISO G6.3			
Stages	Seal		Fluid temperature			
2	Packing		158° F (70° C)			
Model	Reference	Ø Suction	Ø Discharge	Ø Impeller	Speed	
1	QU 4-2	1E0022	4" NPT	4" NPT	13.000" and 10.250"	1750 rpm

Performance Curve



Pump Features						
Pump Type	Design		Impeller			
Centrifuge	Frame Mounted		Enclosed and balanced ISO G6.3			
Stages	Mechanical Seal		Fluid temperature			
1	2" Type 01		158° F (70° C)			
Model	Reference	Ø Suction	Ø Discharge	Ø Impeller	Speed	
1 QU 4"	1E0023	5" (B)	4" (B)	8.500"	3500 rpm	

Performance Curve



High Pressure Line

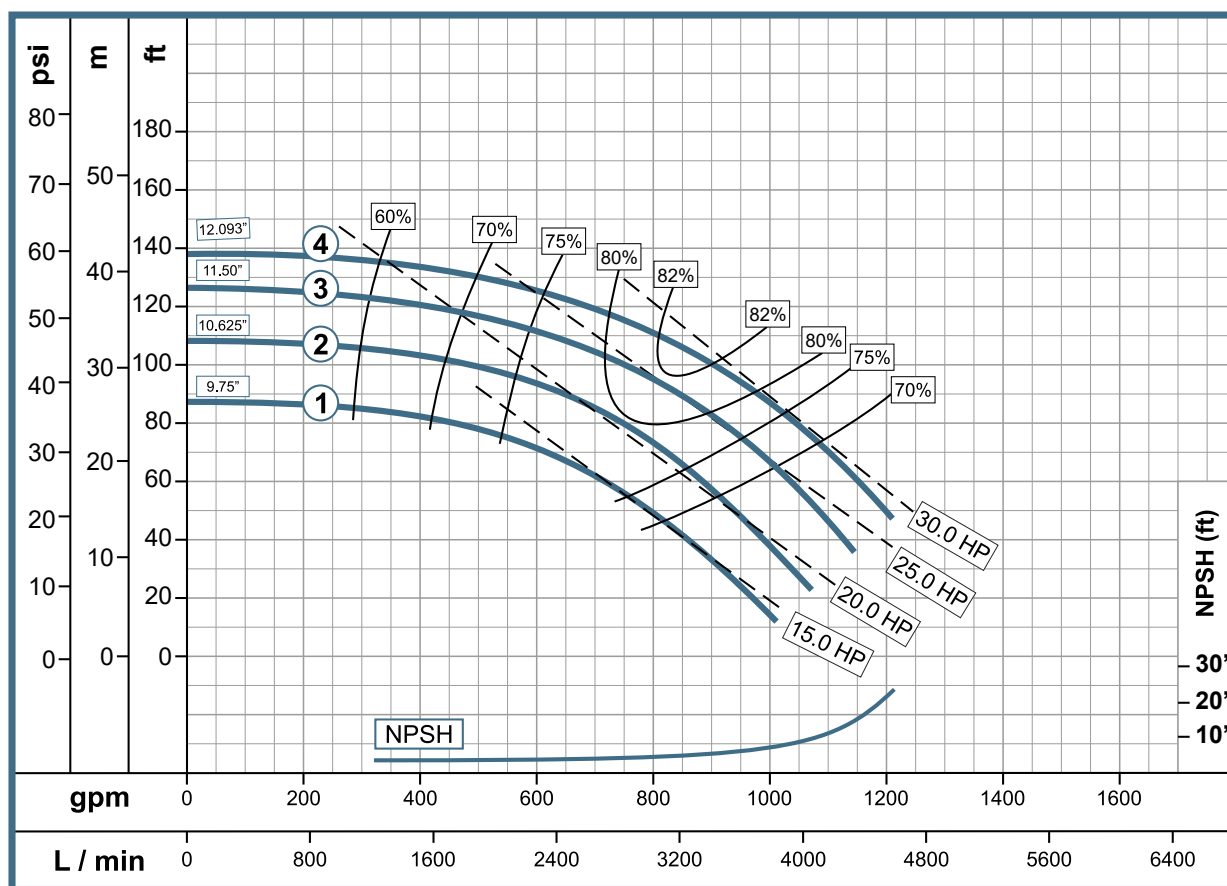
QU 4



www.wdmpumps.com

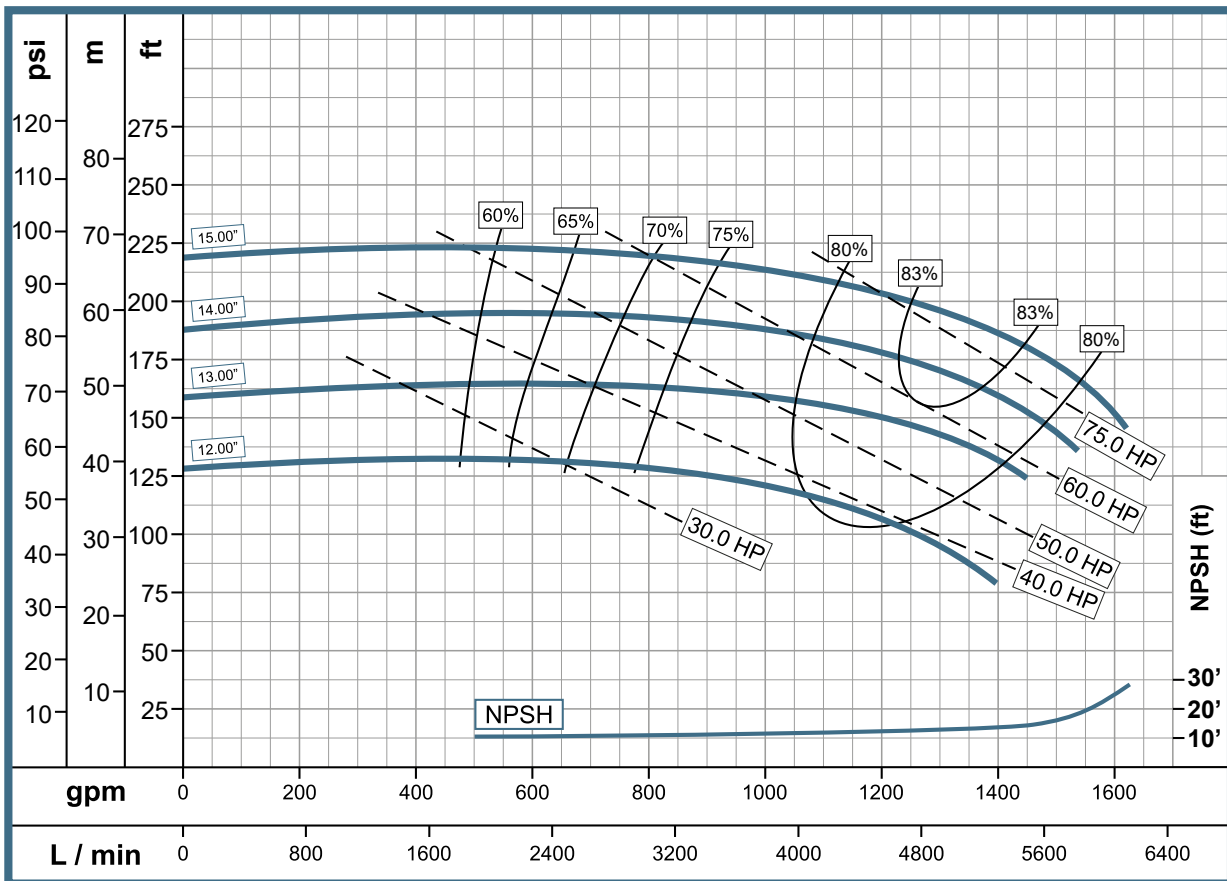
Pump Features						
Pump Type	Design		Impeller			
Centrifuge	Frame Mounted		Enclosed and balanced ISO G6.3			
Stages	Mechanical Seal		Fluid temperature			
1	2" Type 01		158° F (70° C)			
Model	Reference	Ø Suction	Ø Discharge	Ø Impeller	Speed	
1	QU 4"	1E0023	5" (B)	4" (B)	12.090"	1750 rpm

Performance Curve



Pump Features						
Pump Type	Design		Impeller			
Centrifuge	Frame Mounted		Enclosed and balanced ISO G6.3			
Stages	Mechanical Seal		Fluid temperature			
1	2" Type 01		158° F (70° C)			
Model	Reference	Ø Suction	Ø Discharge	Ø Impeller	Speed	
1	QU 6	1E0024	6" (B)	6" (B)	15.000"	1.750 rpm

Performance Curve



www.wdmpumps.com



■ www.wdmpumps.com

VERSIÓN	0
FECHA	23/08/24