

# WDM<sup>®</sup>

## PUMPS



**PP** Pumps and Motors  
**Submersible Deep Well**  
2.5ST / 3ST / 4SP / 6SP

- Flow rates up to 238 GPM
- Discharge size up to 3"
- Impeller in plastic POM or AISI 304 SS
- Motors up to 35 HP
- Temperature up to 95° F or 122° F
- Stainless steel 304 SS case



## Technical Book

### Deep Well Pumps

WDM PUMPS



[www.wdmpumps.com](http://www.wdmpumps.com)

## WDM Water Systems

WDM Pumps has expanded its brand as an international manufacturer of fluid handling pumps by consistently meeting and exceeding the needs of our customers.

Continuing a tradition of more than 60 years, WDM Pumps manufactures quality electric and engine driven pumps for diverse commercial and industrial applications. Our continued growth is based on a commitment to high standards for efficient product design, production, sales, and customer support.

Our customers rely on our world-class team of experienced WDM Pumps engineers, technicians, and product application specialists.

WDM offers pump products and related equipment for a wide variety of industries. WDM Pumps manufactured and distributed self priming, flexible coupled, close coupled, horizontal split case, vertical inline, UL/FM listed fire pumps, vertical multistage, ANSI, submersible sump and sewage and vertical turbine.

WDM Pumps plants are strategically located throughout the Americas with USA offices located in Tulsa Oklahoma.





North  
Pacific  
Ocean

North  
Atlantic  
Ocean

**Other factories:**

- Mexico
- Guatemala
- Panama
- Colombia
- Ecuador
- Peru
- Brasil
- Chile
- Argentina

# INDEX



Pump Family	Nomenclature	Content	Pag.
Deep Well Pumps	2.5ST / 3ST / 4SP / 6SP	Selection Charts	6
		Section Views	7
		Dimensions	8-9
		Performance Curves	10-18
Motors	ST / SP Series	Exploded View	19
		Technical Information	19
Control Boxes	ST / SP Series	Technical Information	22



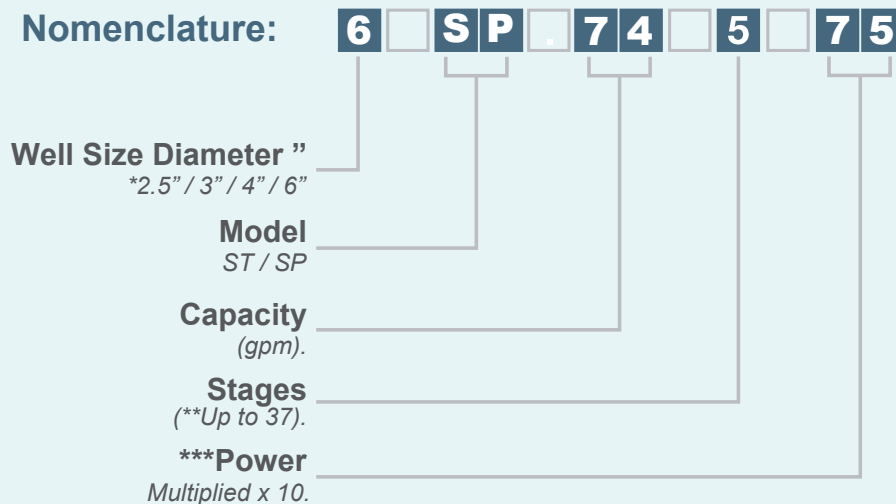
## Submersible Pumps Deep Well

### Features:

- Vertical multistage centrifugal pump
- Impellers in POM Plastic or AISI 304 SS depending on the model.
- Discharge: up to 3".
- Single-phase and three-phase submersible electric motors with power ratings ranging from 1/2 HP to 35 HP.
- Pressure: up to 306 mca
- Flow Rate: up to 238 gpm



### Nomenclature:



\*The diameter in inches can be 2.5", 3", 4" or 6".

\*\*The number of stages may vary depending on the reference.

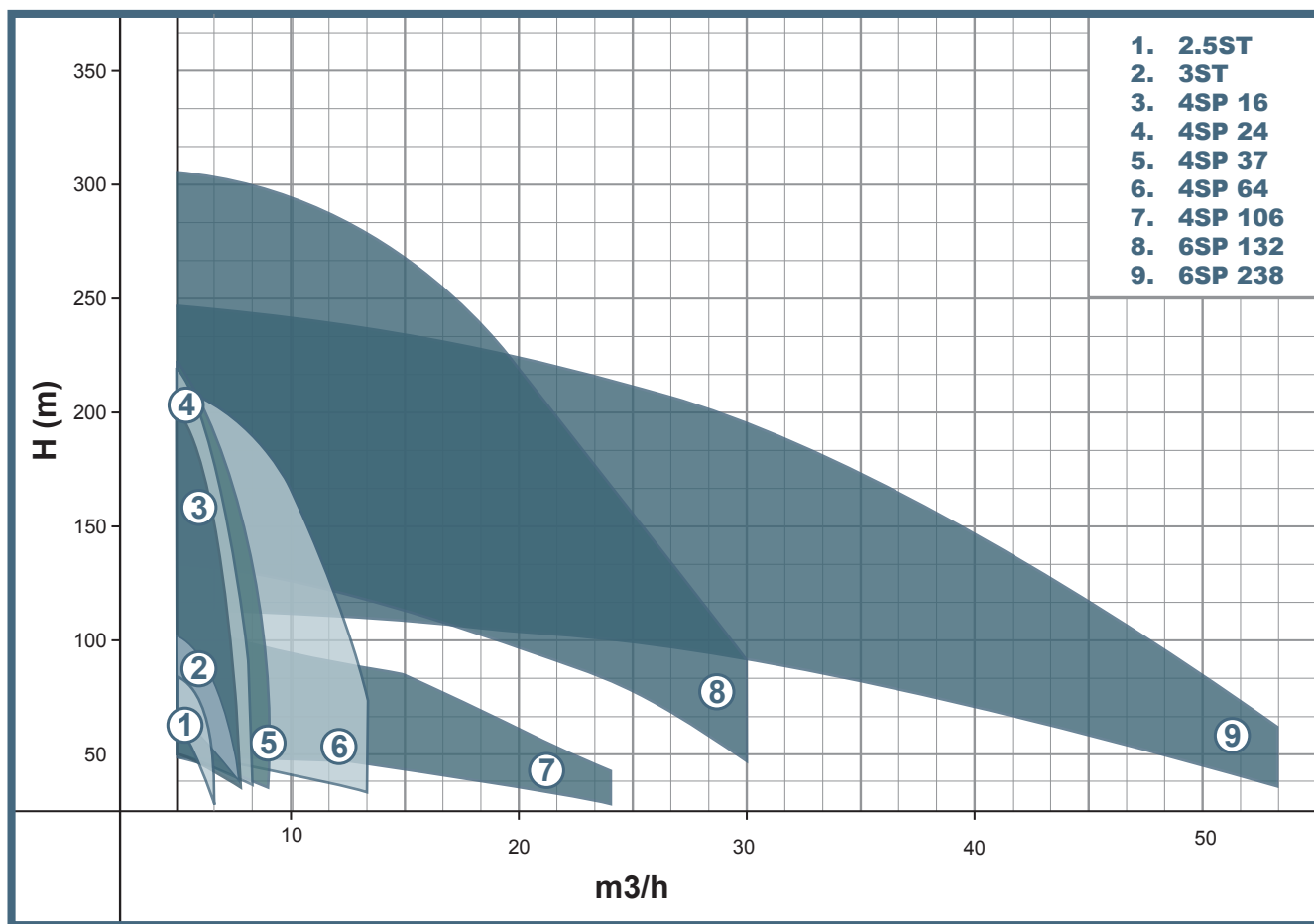
\*\*\*Motor power multiplied by 10 (75 = 7.5 hp).

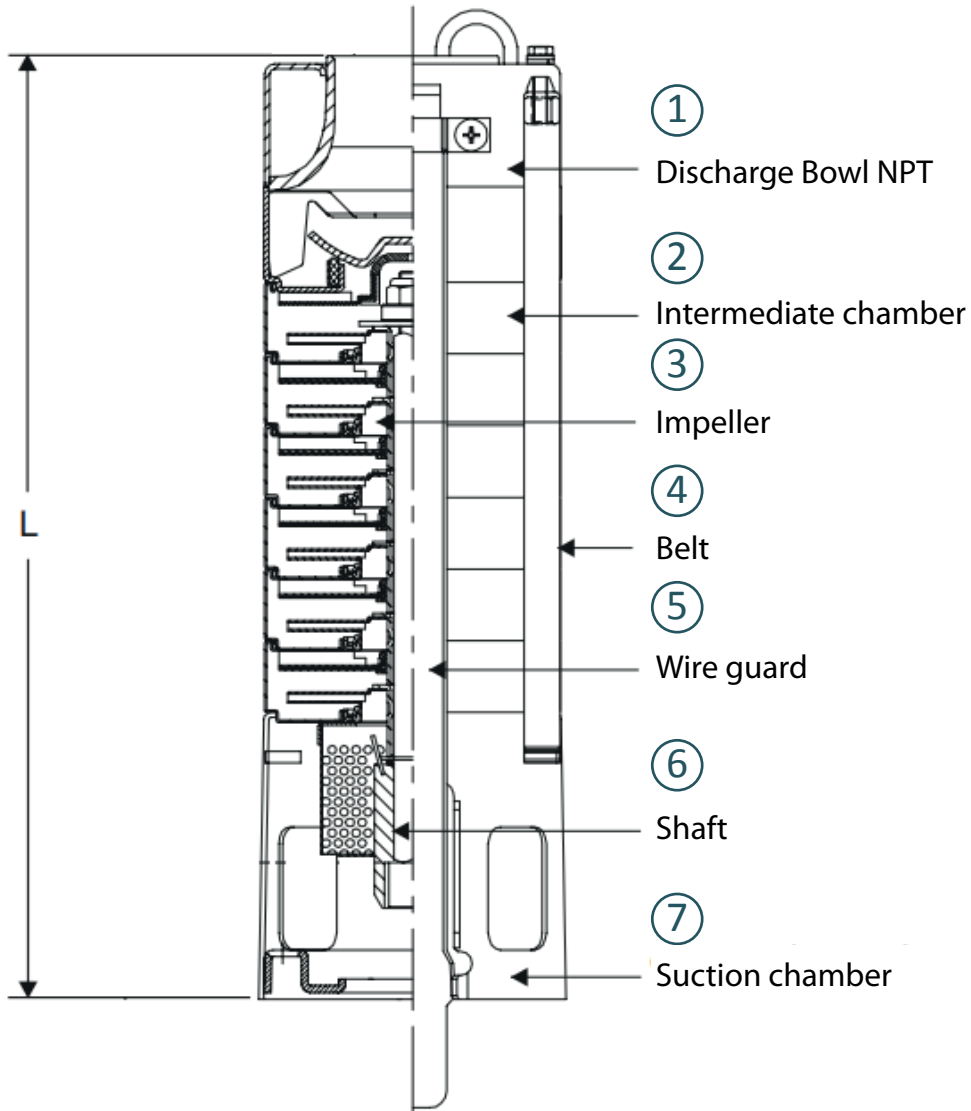
**Selection Charts**  
**2,5ST - 3ST -**  
**4SP - 6SP**  
**Deep Well Pumps**



[www.wdmpumps.com](http://www.wdmpumps.com)

2 poles (3600 rpm)





ITEM	QTY	DESCRIPTION	MATERIAL		
			2.5 ST / 3ST	4SP	6SP
1	1	DISCHARGE BOWL NPT	ASTM C85500/	AISI 304 SS	AISI 304 SS
2	1	INTERMEDIATE CHAMBER	AISI 304 SS	AISI 304 SS	AISI 304 SS
3	*	IMPELLER	PLÁSTICO POM	AISI 304 SS	AISI 304 SS
4	3	BELT	N/A	AISI 304 SS	AISI 304 SS
5	1	WIRE GUARD	AISI 304 SS	AISI 304 SS	AISI 304 SS
6	1	SHAFT	AISI 304 SS	AISI 304 SS	AISI 431 SS
7	1	SUCTION CHAMBER	ASTM C85500	AISI 304 SS	AISI 304 SS

Technical specifications are subject to change without prior notice.  
\*Depends on the pump reference.

# Dimensions ST/SP Series Deep Well Pumps



www.wdmpumps.com

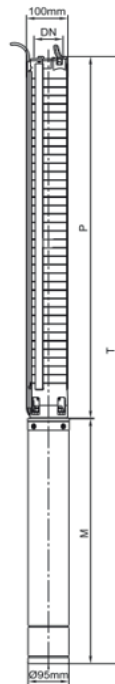
## 2.5 ST



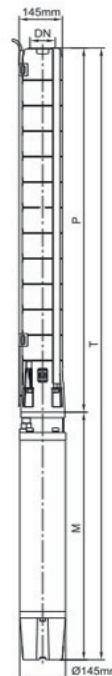
## 3 ST



## 4 SP



## 6 SP



Model	Ref.	Discharge DN	DIMENSIONS (mm)					WEIGHT (Kg)				
			P	M(S)	M(T)	T(S)	T(T)	P	M(S)	M(T)	T(S)	T(T)
2.5ST 13-16-5	E2713	1" NPT	646	787	-	1433	-	3.7	8.2	-	11.9	-
2.5ST 13-22-7.5	E2714	1" NPT	778	1001	-	1779	-	4.1	8.9	-	13.0	-
3ST 16-9-5	E2715	1" NPT	318	338	-	656	-	1.9	5.6	-	7.5	-
3ST 16-17-10	E2716	1" NPT	527	408	-	935	-	2.6	7.5	-	10.1	-
4SP 16-6-5	E2100	1-1/4" NPT	275	314	-	589	-	2.0	6.6	-	8.6	-
4SP 16-8-10	E2101	1-1/4" NPT	317	359	344	676	661	2.4	8.7	8.0	11.1	10.4
4SP 16-11-10	E2102	1-1/4" NPT	380	359	344	739	724	3.1	8.7	8.0	11.8	11.1
4SP 16-14-15	E2103	1-1/4" NPT	443	399	379	842	822	3.8	10.6	9.8	14.4	13.6
4SP 16-19-20	E2105	1-1/4" NPT	548	449	414	997	962	4.9	12.9	11.2	17.8	16.1
4SP 16-22-20	E2106	1-1/4" NPT	611	449	414	1060	1025	5.5	12.9	11.2	18.4	16.7
4SP-16-25-25	E2107	1-1/4" NPT	674	502	449	1176	1123	6.2	15.9	12.9	22.1	19.1
4SP-16-32-35	E2109	1-1/4" NPT	821	-	527	-	1348	7.7	-	16.8	-	24.5
4SP 24-5-7	E2114	1-1/4" NPT	254	329	-	583	-	1.9	7.3	-	9.2	-
4SP 24-7-10	E2115	1-1/4" NPT	296	359	344	655	640	2.4	8.7	8.0	11.1	10.4
4SP 24-9-15	E2116	1-1/4" NPT	338	399	379	737	717	2.8	10.6	9.8	13.4	12.6
4SP 24-11-15	E2117	1-1/4" NPT	380	399	379	779	759	3.2	10.6	9.8	13.8	13.0
4SP 24-13-20	E2118	1-1/4" NPT	422	449	414	871	836	3.7	12.9	11.2	16.6	14.9

M= Motor. P= Pump. T= Pump + Motor. M(S)= Single-phase Motor. M(T)= Three-phase Motor. T(S)=Pump + Single-phase Motor. T(T)= Pump + Three-phase Motor.

Technical specifications are subject to change without prior notice.



Model	Ref.	Discharge DN	DIMENSIONS (mm)					WEIGHT (Kg)				
			P	M(S)	M(T)	T(S)	T(T)	P	M(S)	M(T)	T(S)	T(T)
4SP 24-15-20	E2119	1-1/4" NPT	464	449	414	913	878	4.1	12.9	11.2	17.0	15.x3
4SP 24-18-30	E2120	1-1/4" NPT	527	542	502	1069	1029	4.6	17.8	15.6	22.4	20.2
4SP 24-21-30	E2121	1-1/4" NPT	590	542	502	1132	1092	5.4	17.8	15.6	23.2	21.0
4SP 24-25-50	E2122	1-1/4" NPT	674	-	622	-	1296	6.3	-	21.4	-	27.7
4SP 24-36-55	E2125	1-1/4" NPT	905	-	622	-	1527	8.7	-	21.4	-	30.1
4SP 37-4-7	E2128	1-1/4" NPT	233	359	344	592	577	2.2	8.7	8.0	10.9	10.2
4SP 37-5-10	E2129	1-1/4" NPT	254	359	344	613	598	2.4	8.7	8.0	11.1	10.4
4SP 37-7-15	E2130	1-1/2" NPT	296	399	379	695	675	2.9	10.6	9.8	13.5	12.7
4SP 37-10-20	E2131	1-1/2" NPT	359	449	414	808	773	3.5	12.9	11.2	16.4	14.7
4SP 37-15-30	E2132	1-1/2" NPT	464	542	502	1006	966	4.6	17.8	15.6	22.4	20.2
4SP 37-25-55	E2134	1-1/2" NPT	674	-	622	-	1296	6.8	-	21.4	-	28.2
4SP 37-37-100	E2138	1-1/2" NPT	926	-	768	-	1694	9.5	-	28.0	-	37.5
4SP 64-3-10	E2139	2" NPT	281	359	344	640	625	3.7	8.7	8.0	12.4	11.7
4SP 64-5-15	E2140	2" NPT	365	399	379	764	744	4.4	10.6	9.8	15.0	14.2
4SP 64-7-20	E2141	2" NPT	449	449	414	898	863	5.0	12.9	11.2	17.9	16.2
4SP 64-9-30	E2142	2" NPT	533	542	502	1075	1035	5.6	17.8	15.6	23.4	21.2
4SP 64-12-40	E2143	2" NPT	659	-	622	-	1281	6.7	-	21.4	-	28.1
4SP 64-15-55	E2144	2" NPT	785	-	622	-	1407	7.7	-	21.4	-	29.1
4SP 64-20-75	E2146	2" NPT	995	-	718	-	1713	9.3	-	25.5	-	34.8
4SP 64-26-100	E2148	2" NPT	1247	-	768	-	2015	11.4	-	28.0	-	39.4
4SP 106-3-20	E2149	2" NPT	347	449	414	796	761	6.9	12.9	11.2	19.8	18.1
4SP 106-5-30	E2151	2" NPT	447	542	502	989	949	7.5	17.8	15.6	25.3	23.1
4SP 106-8-55	E2154	2" NPT	597	-	622	-	1219	8.4	-	21.4	-	29.8
4SP 106-10-75	E2156	2" NPT	697	-	718	-	1415	9.0	-	25.5	-	34.5
4SP 106-12-100	E2157	2" NPT	797	-	768	-	1565	9.6	-	28.0	-	37.6
6SP 132-8-100	E2161	3" NPT	753	-	654	-	1407	13.9	-	46.9	-	60.8
6SP 132-9-100	E2162	3" NPT	813	-	654	-	1467	15.2	-	46.9	-	62.1
6SP 132-13-150	E2164	3" NPT	1055	-	754	-	1809	20.4	-	57.5	-	77.9
6SP 132-19-250	E2167	3" NPT	1418	-	934	-	2352	28.2	-	82.2	-	110.4
6SP 238-7-150	E2179	3" NPT	941	-	754	-	1695	16.1	-	57.5	-	73.6
6SP 238-8-200	E2180	3" NPT	941	-	754	-	1695	19.1	-	57.5	-	76.6
6SP 238-10-200	E2182	3" NPT	1229	-	854	-	2083	21.5	-	67.9	-	89.4
6SP238-11-250	E2183	3" NPT	1325	-	934	-	2259	23.3	-	82.2	-	105.5
6SP 238-12-250	E2184	3" NPT	1421	-	934	-	2355	25.1	-	82.2	-	107.3
6SP 238-15-350	E2187	3" NPT	1709	-	1094	-	2803	30.5	-	101.7	-	132.2

# ST/SP Series Performance Curves 2.5 ST

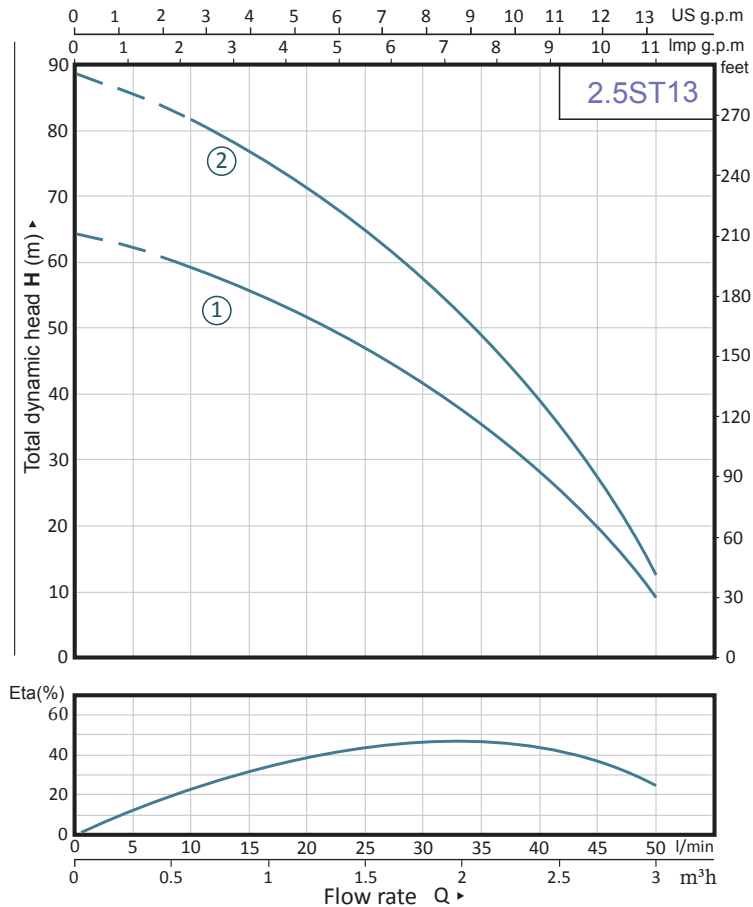


www.wdmpumps.com

Pump Features					
Pump Type	Design		Impeller		
Submersible well pump 2.5"	Deep Well		Closed, Plastic POM		
Stages	Mechanical Seal		Fluid temperature		
Multistage	Carbon-Ceramic /TC		Up to +95° F		
Model	Reference	Stages	Ø Discharge	Ø Pump	
1	2.5ST 13-16-5	E2713	16	1 "NPT 66 mm	
2	2.5ST 13-22-7.5	E2714	22	1 "NPT 66 mm	

Motor Features			
Drive		Speed (rpm)	Frequency (Hz)
Electric		3.450 (nominal)	60
Power (hp)	Phases	Voltage (V)	IP
0.5	1	127	68
0.75	1	127	68

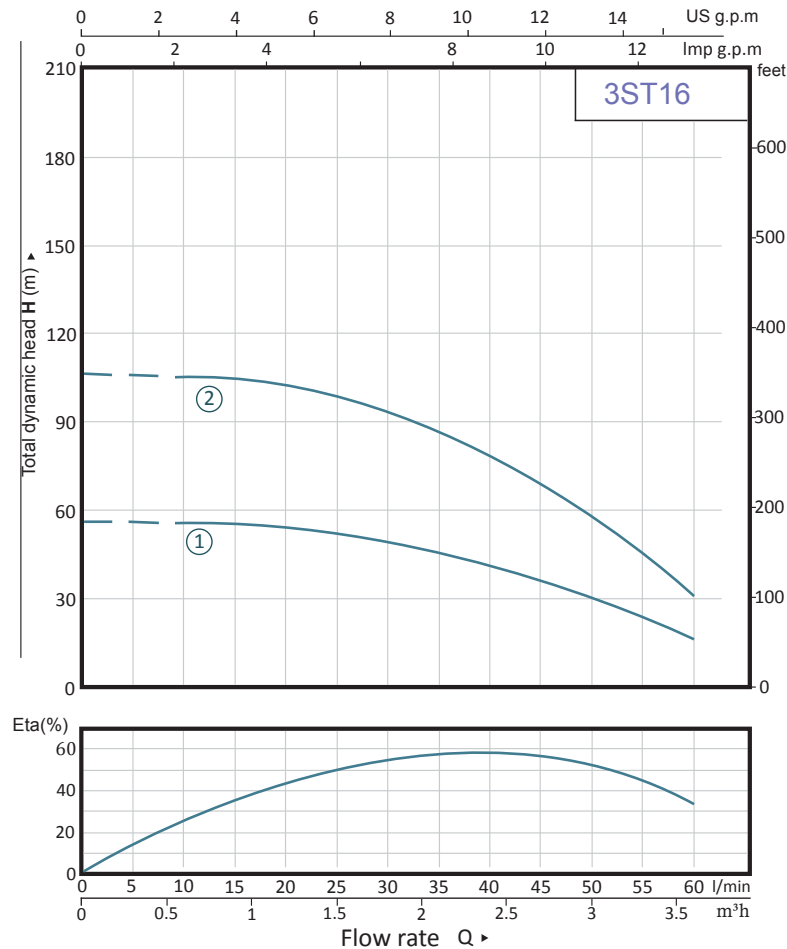
## Performance Curve



Pump Features					
Pump Type	Design		Impeller		
Submersible well pump 3"	Deep Well		Closed, Plastic POM		
Stages	Mechanical Seal		Fluid Temperature		
1	Carbon-Ceramic /TC		Up to +95° F		
Model	Reference	Stages	Ø Discharge	Ø Pump	
1	3ST 16-9-5	E2715	9	1" NPT 75 mm	
2	3ST 16-17-10	E2716	17	1" NPT 75 mm	

Motor Features			
Drive		Speed (rpm)	Frequency (Hz)
Electric		3.450 (nominal)	60
Power (hp)	Phases	Voltage (V)	IP
0.5	1	127	68
1	1	230	68

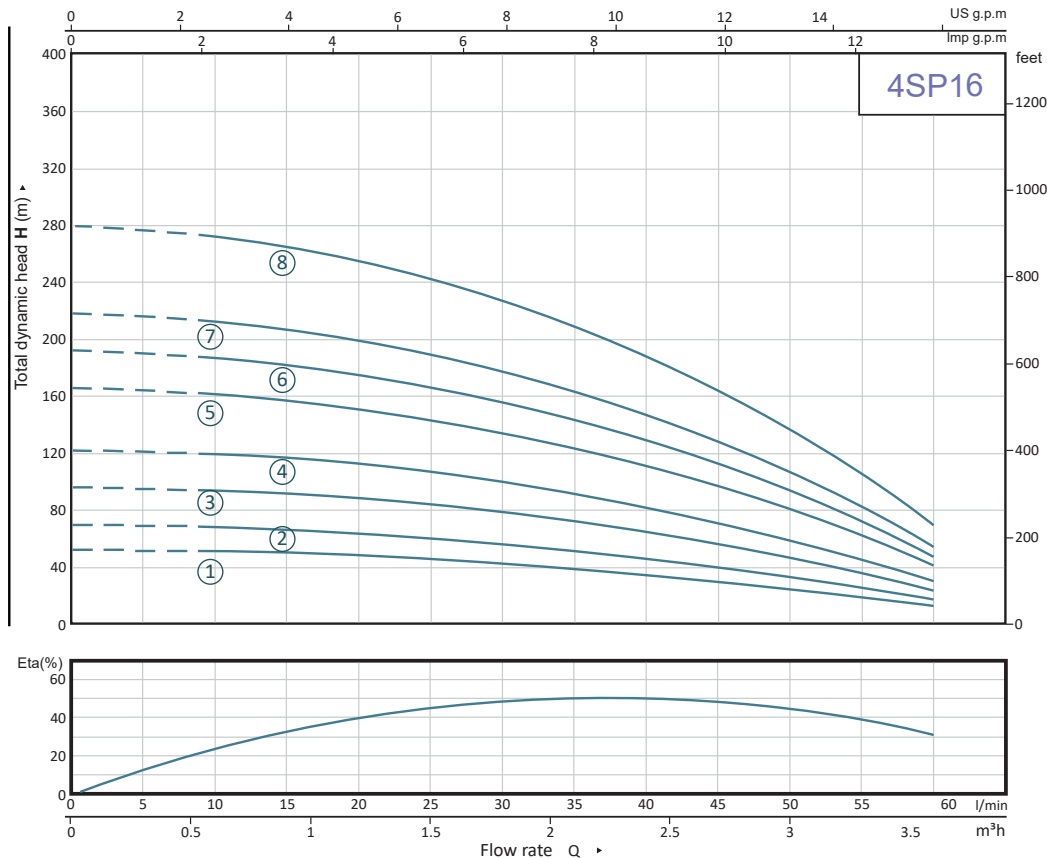
### Performance Curve



Pump Features					
Pump Type	Design		Impeller		
Submersible well pump 4"	Deep Well		AISI 304 SS		
Stages	Mechanical Seal		Fluid Temperature		
Multistage	Carbon-Ceramic /TC		Up to +122° F		
Model	Reference	Stages	Ø Discharge	Ø Pumps	
1	4SP 16-6-5	E2100	6	1-1/4" NPT 100 mm	
2	4SP 16-8-10	E2101	8	1-1/4" NPT 100 mm	
3	4SP 16-11-10	E2102	11	1-1/4" NPT 100 mm	
4	4SP 16-14-15	E2103	14	1-1/4" NPT 100 mm	
5	4SP 16-19-20	E2105	19	1-1/4" NPT 100 mm	
6	4SP 16-22-20	E2106	22	1-1/4" NPT 100 mm	
7	4SP-16-25-25	E2107	25	1-1/4" NPT 100 mm	
8	4SP-16-32-35	E2109	32	1-1/4" NPT 100 mm	

Motor Features					
Drive		Speed (rpm)	Frequency (Hz)		
Electric		3.500 (nominal)	60		
Power (hp)	Phases	Voltage (V)		IP	
0.5	1	127		68	
1	1 3	127/230	230	68	
1.5	1 3	127/230	230/460	68	
2	1 3	127/230	230	68	
2.5	1 3	127/230	230	68	
3.5	1 3	230	230/460	68	

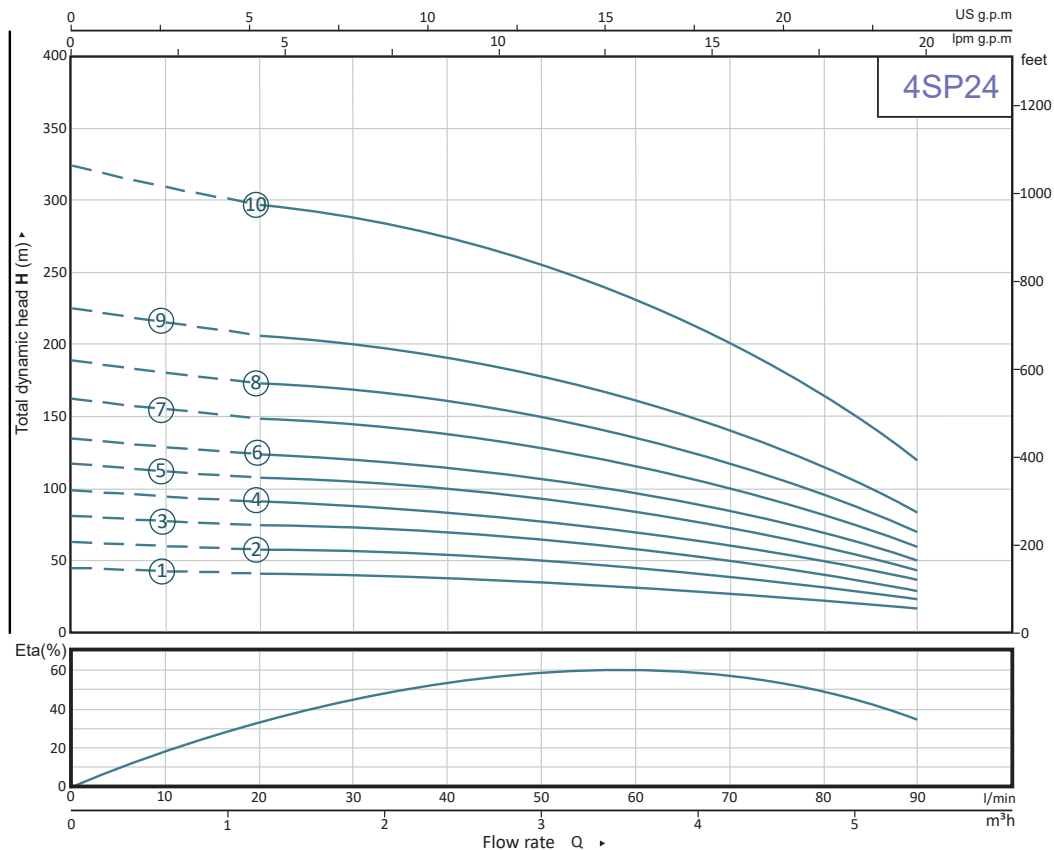
### Performance Curve



Pump Features					
Pump Type	Design		Impeller		
Submersible well pump 4"	Deep Well		AISI 304 SS		
Stages	Mechanical Seal		Fluid Temperature		
Multistage	Carbon-Ceramic /TC		Up to +122° F		
Model	Reference	Stages	Ø Discharge	Ø Pump	
1	4SP 24-5-7	E2114	5	1-1/4" NPT 100 mm	
2	4SP 24-7-10	E2115	7	1-1/4" NPT 100 mm	
3	4SP 24-9-15	E2116	9	1-1/4" NPT 100 mm	
4	4SP 24-11-15	E2117	11	1-1/4" NPT 100 mm	
5	4SP 24-13-20	E2118	13	1-1/4" NPT 100 mm	
6	4SP 24-15-20	E2119	15	1-1/4" NPT 100 mm	
7	4SP 24-18-30	E2120	18	1-1/4" NPT 100 mm	
8	4SP 24-21-30	E2121	21	1-1/4" NPT 100 mm	
9	4SP 24-25-50	E2122	25	1-1/4" NPT 100 mm	
10	4SP 24-36-55	E2125	36	1-1/4" NPT 100 mm	

Motor Features					
Drive		Speed (rpm)		Frequency (Hz)	
Electric		3.450 (nominal)		60	
Power (hp)	Phases	Voltage (V)		IP	
0.75	1	127		68	
1	1 3	127/230	230	68	
1.5	1 3	127/230	230/460	68	
1.5	1 3	127/230	230/460	68	
2	1 3	127/230	230	68	
2	1 3	127/230	230	68	
3	1 3	230	230	68	
3	1 3	230	230	68	
5.5	3	230/460		68	
5.5	3	230/460		68	

### Performance Curve



# ST/SP Series

## 4 SP 37

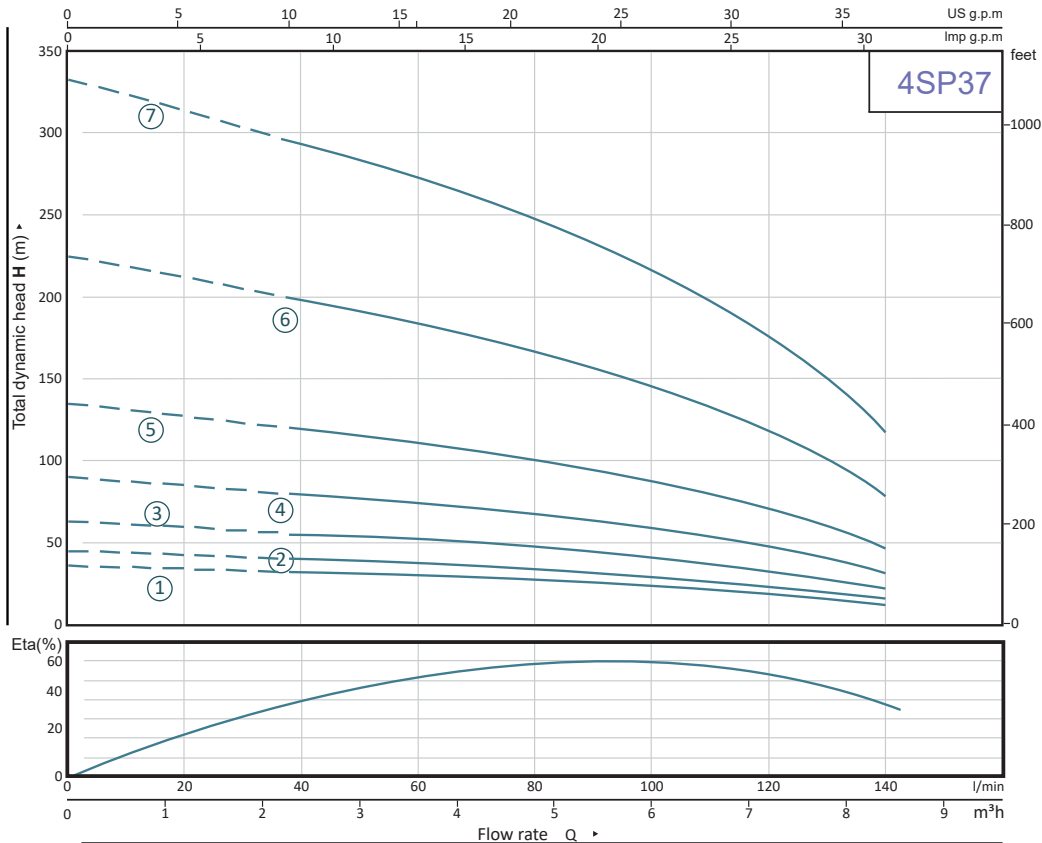


www.wdmpumps.com

Pump Features					
Pump Type	Design		Impeller		
Submersible well pump 4"	Deep Well		AISI 304 SS		
Stages	Mechanical Seal		Fluid Temperature		
Multistage	Carbon-Ceramic /TC		Up to +122° F		
Model	Reference	Stages	Ø Discharge	Ø Pump	
1	4SP 37-4-7	E2128	4	1-1/2" NPT 100 mm	
2	4SP 37-5-10	E2129	5	1-1/4" NPT 100 mm	
3	4SP 37-7-15	E2130	7	1-1/2" NPT 100 mm	
4	4SP 37-10-20	E2131	10	1-1/2" NPT 100 mm	
5	4SP 37-15-30	E2132	15	1-1/2" NPT 100 mm	
6	4SP 37-25-55	E2134	25	1-1/2" NPT 100 mm	
7	4SP 37-37-100	E2138	37	1-1/2" NPT 100 mm	

Motor Features					
Drive		Speed (rpm)		Frequency (Hz)	
Electric		3.450 (nominal)		60	
Power (hp)	Phases		Voltage (V)		IP
1	1	3	127/230	230	68
1	1	3	127/230	230	68
1.5	1	3	127/230	230/460	68
2	1	3	127/230	230	68
3	1	3	230	230	68
5.5	3		230/460		68
10	3		230/460		68

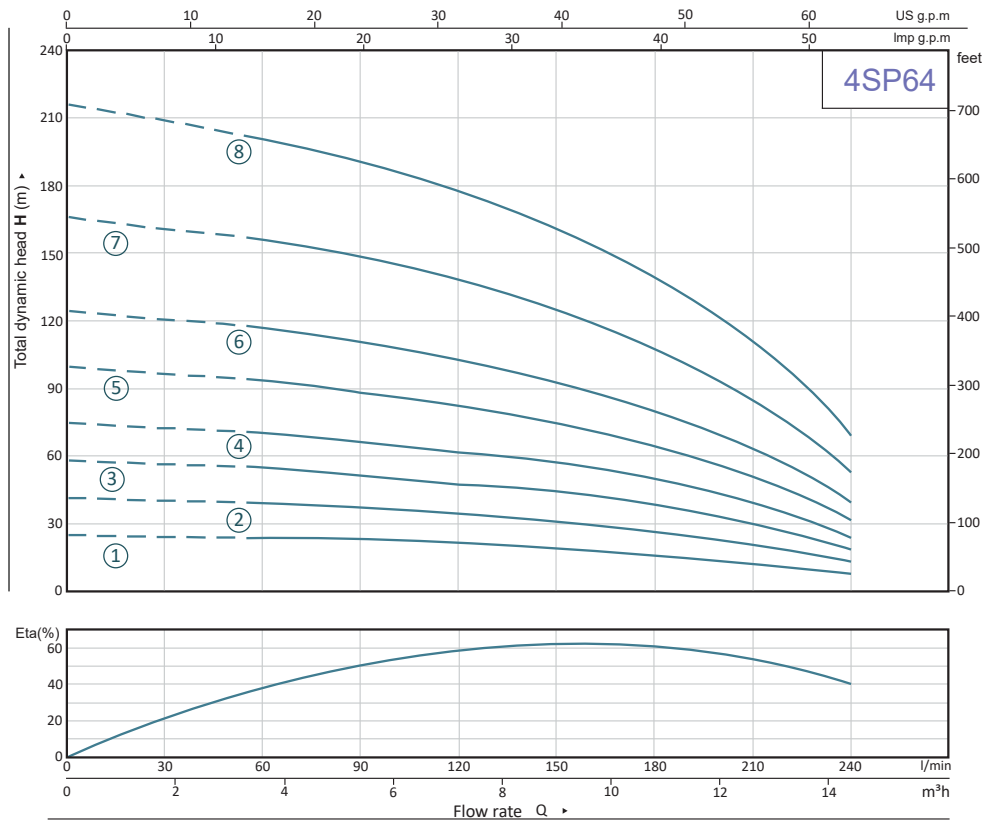
### Performance Curve



Pump Features					
Pump Type	Design		Impeller		
Submersible well pump 4"	Deep Well		AISI 304 SS		
Stages	Mechanical Seal		Fluid Temperature		
Multistage	Carbon-Ceramic /TC		Up to +122° F		
Model	Reference	Stages	Ø Discharge	Ø Pump	
1	4SP 64-3-10	E2139	3	2" NPT 100 mm	
2	4SP 64-5-15	E2140	5	2" NPT 100 mm	
3	4SP 64-7-20	E2141	7	2" NPT 100 mm	
4	4SP 64-9-30	E2142	9	2" NPT 100 mm	
5	4SP 64-12-40	E2143	12	2" NPT 100 mm	
6	4SP 64-15-55	E2144	15	2" NPT 100 mm	
7	4SP 64-20-75	E2146	20	2" NPT 100 mm	
8	4SP 64-26-100	E2148	26	2" NPT 100 mm	

Motor Features					
Drive		Speed (rpm)		Frequency (Hz)	
Electric		3.500 (nominal)		60	
Power (hp)	Phases		Voltage (V)		IP
1	1	3	127/230	230	68
1.5	1	3	127/230	230/460	68
2	1	3	127/230	230	68
3	1	3	230	230	68
5.5	3		230/460		68
5.5	3		230/460		68
7.5	3		230/460		68
10	3		230/460		68

### Performance Curve



# ST/SP Series

## 4 SP 106

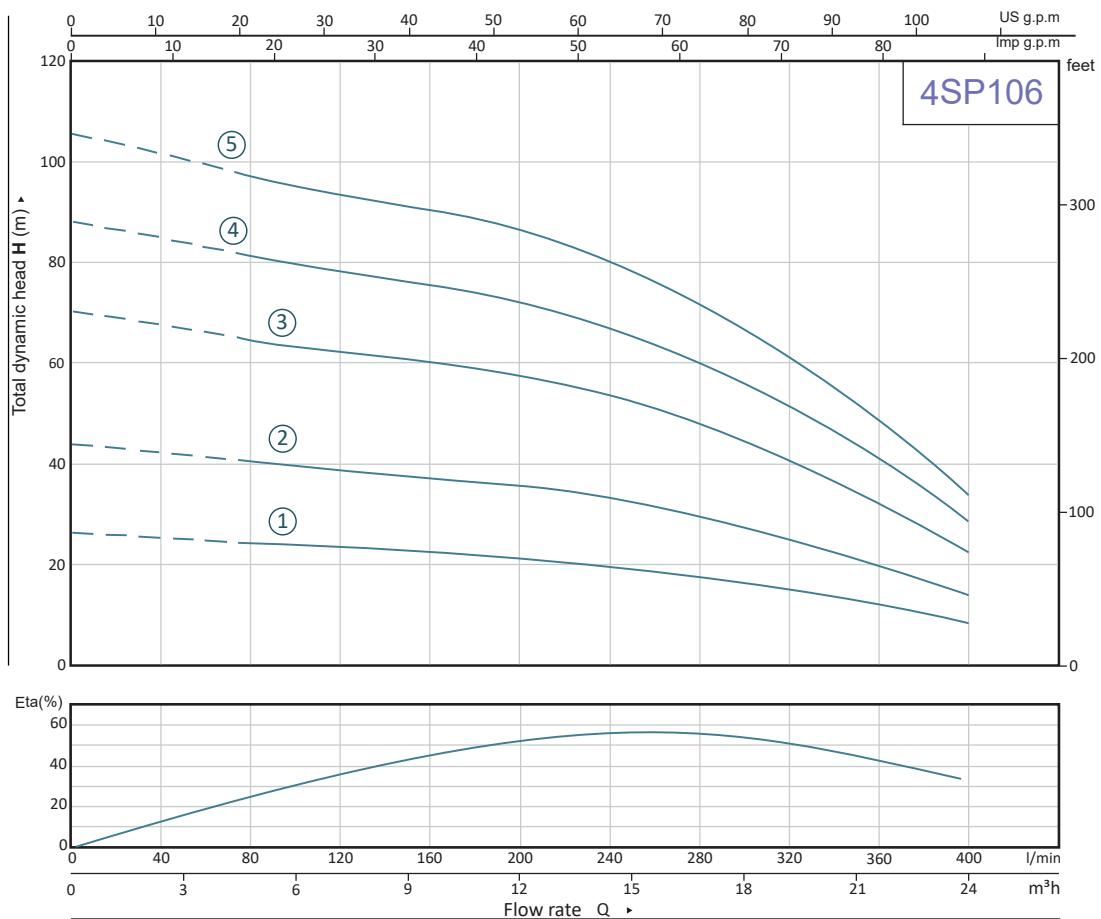


www.wdmpumps.com

Pump Features					
Pump Type		Design		Impeller	
Submersible well pump 4"		Deep Well		Closed, Plastic POM	
Stages		Mechanical Seal		Fluid Temperature	
Multistage		Carbon-Ceramic / TC		Up to + 95° F	
Model	Reference	Stages	Ø Discharge	Ø Pump	
1	4SP 106-3-20	E2149	3	2" NPT 100 mm	
2	4SP 106-5-30	E2151	5	2" NPT 100 mm	
3	4SP 106-8-55	E2154	8	2" NPT 100 mm	
4	4SP 106-3-20	E2156	10	2" NPT 100 mm	
5	4SP 106-12-100	E2157	12	2" NPT 100 mm	

Motor Features					
Drive			Speed (rpm)		Frequency (Hz)
Electric			3.450 (nominal)		60
Power (hp)	Phases		Voltage (V)		IP
2	1	3	127/230	230	68
3	1	3	230	230	68
5.5	3		230/460		68
7.5	3		230/460		68
10	3		230/460		68

### Performance Curve

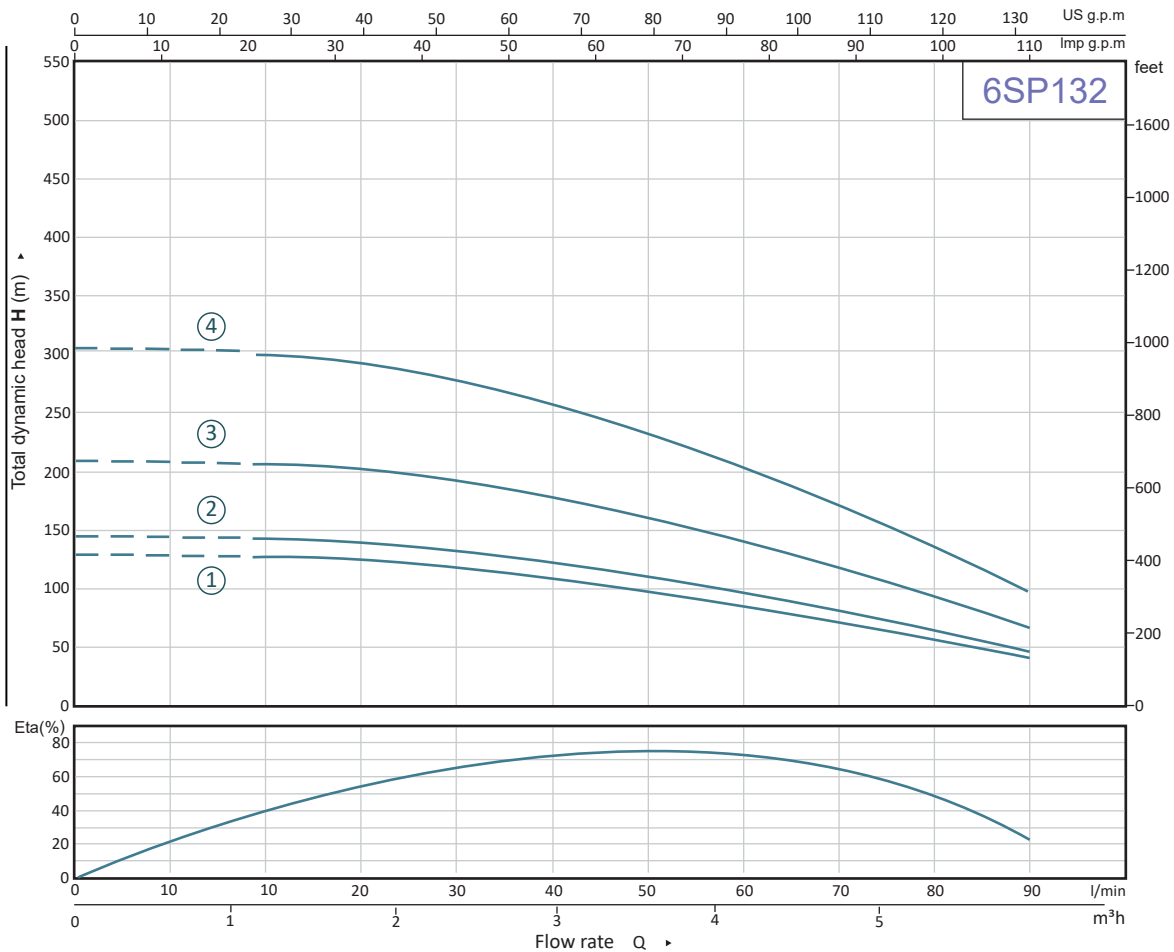




Pump Features					
Pump Type	Design		Impeller		
Submersible well pump 6"	Deep Well		AISI 304 SS		
Stages	Mechanical Seal		Fluid Temperature		
Multistage	Carbon-Silicon / TC		Up to +122° F		
Model	Reference	Stages	Ø Discharge	Ø Pump	
1 6SP 132-8-100	E2161	8	3" NPT	145 mm	
2 6SP 132-9-100	E2162	9	3" NPT	145 mm	
3 6SP 132-13-150	E2164	13	3" NPT	145 mm	
4 6SP 132-19-250	E2167	19	3" NPT	145 mm	

Motor Features			
Drive		Speed (rpm)	Frequency (Hz)
Electric		3.450 (nominal)	60
Power (hp)	Phases	Voltage (V)	IP
10	3	230/460	68
10	3	230/460	68
15	3	230/460	68
25	3	230/460	68

Performance Curve



# ST/SP Series

## 6 SP 238

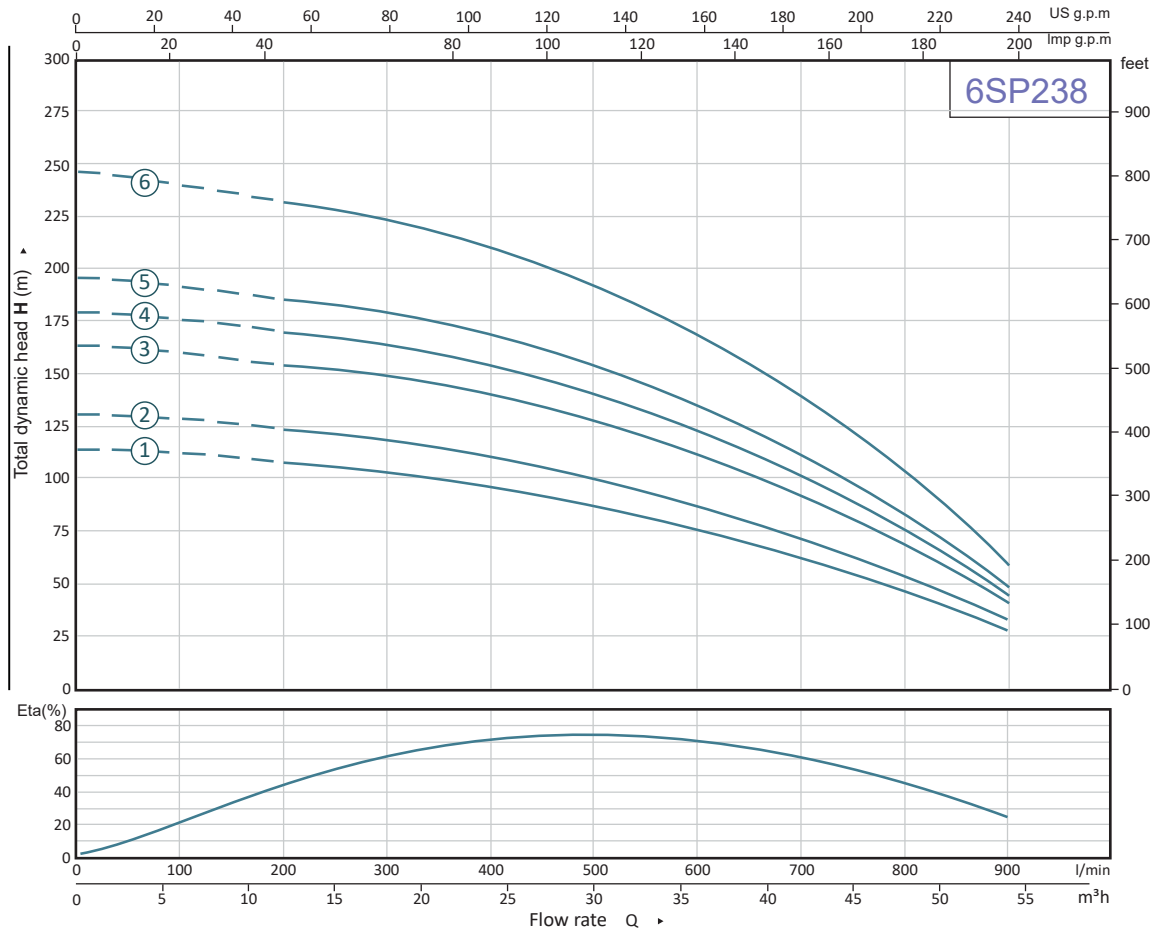


www.wdmpumps.com

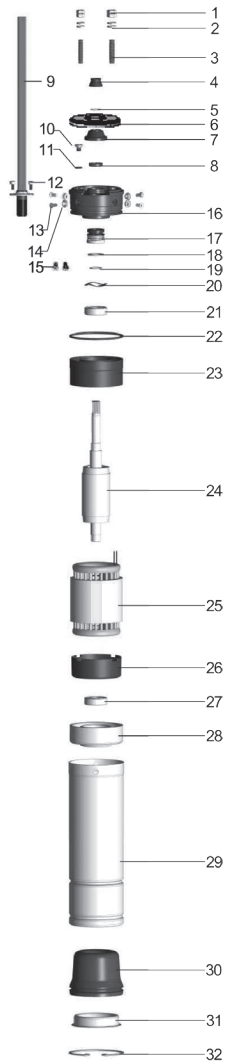
Pump Features					
Pump Type		Design		Impeller	
Submersible well pump 6"		Deep Well		AISI 304 SS	
Stages		Mechanical Seal		Fluid Temperature	
Multistage		Carbon - Silicon / TC		Up to + 122° F	
Model	Reference	Stages	Ø Discharge	Ø Pump	
1	6SP 238-7-150	E2179	7	3" NPT	145 mm
2	6SP 238-8-200	E2180	8	3" NPT	145 mm
3	6SP 238-10-200	E2182	10	3" NPT	145 mm
4	6SP238-11-250	E2183	11	3" NPT	145 mm
5	6SP 238-12-250	E2184	12	3" NPT	145 mm
6	6SP 238-15-350	E2187	15	3" NPT	145 mm

Motor Features			
Drive		Speed (rpm)	Frequency (Hz)
Electric		3,450 (nominal)	60
Power (hp)	Phases	Voltage (V)	IP
15	3	230/460	68
20	3	230/460	68
20	3	230/460	68
25	3	230/460	68
25	3	230/460	68
35	3	460	68

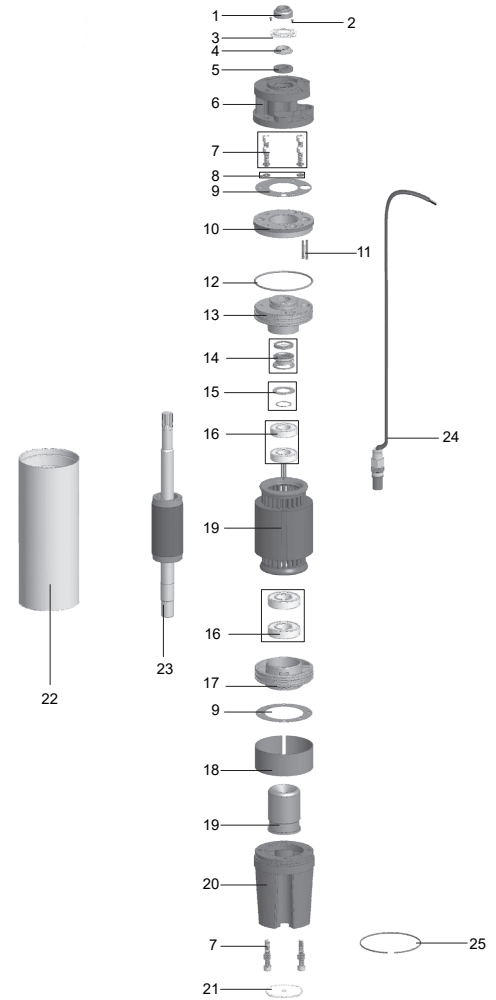
### Performance Curve



Motor 4"	
ITEM	DESCRIPTION
1	NUT
2	SPRING
3	BOLT
4	RUBBER BUSHING
5	GASKET
6	CAP
7	SCUND PROOF COVER
8	OIL SEAL
9	CABLE
10	BOLT
11	O RING
12	BOLT
13	POSITIONING GASKET
14	BOLT
15	BOLT
16	TOP COVER
17	MECHANICAL SEAL
18	GASKET
19	GASKET
20	WASHER
21	BEARING
22	O RING
23	UPPER BUSH
24	ROTOR
25	STATOR
26	BOTTOM BUSH
27	BEARING
28	BOTTOM COVER
29	MOTOR CASING
30	OIL RESERVOIR
31	BOTTOM COVER
32	SEEGER RING



Motor 6"	
ITEM	DESCRIPTION
1	NUT
2	BOLT
3	LOCK WASHER
4	RING
5	OIL SEAL
6	CLAMPING CONNECTOR
7	BOLTS
8	SPRING GASKET
9	COVER GASKET
10	UPPER FIXING BASE
11	CABLE CONNECTOR
12	O RING
13	UPPER COVER
14	MECHANICAL SEAL
15	GASKET
16	BEARINGS 6206
17	LOWER COVER
18	SHAFT SLEEVE
19	STATOR
20	OIL RESERVOIR
21	BASE
22	MOTOR CASING
23	ROTOR
24	FLAT CABLE
25	SEEGER RING



Motors												
Reference	Description	Pump Size (Inch)	Voltage (V)	Frequency (Hz)	Power (Hp)	Power (kw)	Poles	Phases	M (mm)	Weight (Kg)	Motor Outside Diameters (mm)	
62523	MTR SUM2.5 0.5HP 1F 2P 110V	2,5	110	60	0,5	0,37	2P	1F	787	8,2	65	
62525	MTR SUM2.5 0.75HP 1F 2P 110V	2,5	110	60	0,75	0,55	2P	1F	1001	8,9	65	
62527	MTR SUM3 0.5HP 1F 2P 110V	3	110	60	0,5	0,37	2P	1F	338	5,6	73	
62529	MTR SUM3 1HP 1F 2P 220V	3	220	60	1	0,75	2P	1F	408	7,5	73	
61840	MTR SUM4 0,5HP 1F 2P 110	4	110	60	0,5	0,37	2P	1F	314	6,6	95	
70478*	MTR SUM4 1/2HP 1F 2P 110 2W	4	110	60	0,5	0,37	2P	1F	314	6,6	95	

\*Single-phase submersible motors with 2 wires, they do not require a control box, the dimensions are subject to change.

Technical specifications are subject to change without prior notice.

# ST/SP Series

## Motors



www.wdmpumps.com

Motors												
Reference	Description	Pump Size (Inch)	Voltage (V)	Frequency (Hz)	Power (Hp)	Power (kw)	Poles	Phases	M (mm)	Weight (Kg)	Motor Outside Diameters (mm)	
70479*	MTR SUM4 1/2HP 1F 2P 220 2W	4	220	60	0,5	0,37	2P	1F	314	6,6	95	
61842	MTR SUM4 1HP 1F 2P 110	4	110	60	1	0,75	2P	1F	359	8,7	95	
70481*	MTR SUM4 1HP 1F 2P 220 2W	4	220	60	1	0,75	2P	1F	359	8,7	95	
61843	MTR SUM4 1,5HP 1F 2P 110	4	110	60	1,5	1,12	2P	1F	399	10,6	95	
70482*	MTR SUM4 1,5HP 1F 2P 220 2W	4	220	60	1,5	1,12	2P	1F	399	10,6	95	
61844	MTR SUM4 2HP 1F 2P 110	4	110	60	2	1,49	2P	1F	449	12,9	95	
61848	MTR SUM4 1HP 1F 2P 220	4	220	60	1	0,75	2P	1F	359	8,7	95	
61849	MTR SUM4 1,5HP 1F 2P 220	4	220	60	1,5	1,12	2P	1F	399	10,6	95	
61850	MTR SUM4 2HP 1F 2P 220	4	220	60	2	1,49	2P	1F	449	12,9	95	
61872	MTR SUM4 2,5HP 1F 2P 220	4	220	60	2,5	1,86	2P	1F	502	15,9	95	
61851	MTR SUM4 3HP 1F 2P 220	4	220	60	3	2,24	2P	1F	542	17,8	95	
62265	MTR SUM4 3,5HP 1F 2P 220	4	220	60	3,5	2,6	2P	1F	527	16,8	95	
61852	MTR SUM4 1HP 3F 2P 220	4	220	60	1	0,75	2P	3F	344	8,0	95	
61861	MTR SUM4 1,5HP 3F 2P 220	4	220	60	1,5	1,12	2P	3F	379	9,8	95	
61858	MTR SUM4 2HP 3F 2P 220	4	220	60	2	1,49	2P	3F	414	11,2	95	
61873	MTR SUM4 2,5HP 3F 2P 220	4	220	60	2,5	1,86	2P	3F	449	12,9	95	
61859	MTR SUM4 3HP 3F 2P 220	4	220	60	3	2,24	2P	3F	502	15,6	95	
61878	MTR SUM4 3,5HP 3F 2P 220	4	220	60	3,5	2,6	2P	3F	527	16,8	95	
61862	MTR SUM4 5,5HP 3F 2P 220	4	220	60	5,5	4,1	2P	3F	622	21,4	95	
61863	MTR SUM4 7,5HP 3F 2P 220	4	220	60	7,5	5,59	2P	3F	718	25,5	95	
61887	MTR SUM4 10.0HP 3F 2P 220	4	220	60	10	7,49	2P	3F	768	28	95	
61864	MTR SUM4 1,5HP 3F 2P 440	4	440	60	1,5	1,12	2P	3F	379	9,8	95	
61875	MTR SUM4 2,5HP 3F 2P 440	4	440	60	2,5	1,86	2P	3F	449	12,9	95	
61879	MTR SUM4 3,5HP 3F 2P 440	4	440	60	3,5	2,6	2P	3F	527	16,8	95	
61886	MTR SUM4 5,5HP 3F 2P 440	4	440	60	5,5	4,1	2P	3F	622	21,4	95	
61874	MTR SUM4 7,5HP 3F 2P 440	4	440	60	7,5	5,59	2P	3F	718	25,5	95	
61888	MTR SUM4 10HP 3F 2P 440	4	440	60	10	7,49	2P	3F	768	28	95	
61899	MTR SUM6 10.0HP 3F 2P 220	6	220	60	10	7,49	2P	3F	654	46,9	145	
61900	MTR SUM6 15.0HP 3F 2P 220	6	220	60	15	11,19	2P	3F	754	57,5	145	
61901	MTR SUM6 20.0HP 3F 2P 220	6	220	60	20	14,91	2P	3F	854	67,9	145	
61902	MTR SUM6 25.0HP 3F 2P 220	6	220	60	25	18,64	2P	3F	934	82,2	145	
61903	MTR SUM6 30.0HP 3F 2P 220	6	220	60	30	22,37	2P	3F	1014	92,7	145	
61910	MTR SUM6 10HP 3F 2P 440	6	440	60	10	7,46	2P	3F	654	46,9	145	
61911	MTR SUM6 15HP 3F 2P 440	6	440	60	15	11,19	2P	3F	754	57,5	145	
61912	MTR SUM6 20HP 3F 2P 440	6	440	60	20	14,91	2P	3F	854	67,9	145	
61913	MTR SUM6 25HP 3F 2P 440	6	440	60	25	18,64	2P	3F	934	82,2	145	
61914	MTR SUM6 30HP 3F 2P 440	6	440	60	30	22,37	2P	3F	1014	92,7	145	
61915	MTR SUM6 35HP 3F 2P 440	6	440	60	35	26,1	2P	3F	1094	101,7	145	

\*Single-phase submersible motors with 2 wires, they do not require a control box, the dimensions are subject to change.

Motor Materials				
	SUM 2,5	SUM 3	SUM 4	SUM6
Outer Case	Stainless Steel SS304	Stainless Steel SS304	Stainless Steel SS304	Stainless Steel SS201
Top Cover	Cast Cu ASTM C85500	Cast Cu Astm C85500	Cast Cu Astm C85500	Cast Iron Astm N°30
Bottom Cover	Stainless Steel Ss304	Stainless Steel Ss304	Stainless Steel Ss304	Cast Iron Astm N°30
Shaft	Stainless Steel Ss303	Stainless Steel Ss304	Stainless Steel Ss304	Stainless Steel Ss304
Mechanical Seal	Carbon-Ceramic / Tc	Carbón-Cerámica / Tc	Carbon-Ceramic / Tc	Nbr Carbon-Silicon / Tc
Lubrication	Oil	Oil	Oil	Oil
Winding	Copper	Copper	Copper	Copper



Motor Materials				
	SUM 2,5	SUM 3	SUM 4	SUM6
Class	Rewindable	Rewindable	Rewindable	Rewindable
Dimensions	Nema	Nema	Nema	Nema
Voltage	See Table	View Table	View Table	View Table
Phases	View Table	View Table	View Table	View Table
Frequency	View Table	View Table	View Table	View Table
Maximum Liquid Temperature	+35°C	+35°C	50°C	50°C
Cable Length	2 m	2 m	2 m	2 m
Speed	3450 Rpm	3450 Rpm	3450 Rpm	3450 Rpm
Service Factor	1,15	1,15	1,15	1,15
Application	Submersible Well Pump	Submersible Well Pump	Submersible Well Pump	Submersible Well Pump
Power	See Table	View Table	View Table	View Table
Diameter	2,5"	3"	4"	6"
Operation	Vertical	Vertical	Vertical	Vertical
IP	68	68	68	68

# ST/SP Series

## Control Boxes



[www.wdmpumps.com](http://www.wdmpumps.com)



Control Boxes							
Reference	Description	Size (inch)	Voltage (V)	Frequency (Hz)	Power (Hp)	Poles	Phases
62524	CONTROL BOX 0,5HP 110V 1F 2.5in	2,5	110	60	0,5	2P	1F
62526	CONTROL BOX 0,75HP 110V 1F 2.5in	2,5	110	60	0,75	2P	1F
62568	CONTROL BOX 0,5HP 110V 1F 3in	3	110	60	0,5	2P	1F
62570	CONTROL BOX 1HP 220V 1F 3in	3	220	60	1	2P	1F
61881	CONTROL BOX 0,5HP 110V 1F 4"	4	110	60	0,5	2P	1F
61883	CONTROL BOX 1HP 110V 1F 4"	4	110	60	1	2P	1F
61884	CONTROL BOX 1,5HP 110V 1F 4"	4	110	60	1,5	2P	1F
61885	CONTROL BOX 2HP 110V 1F 4"	4	110	60	2	2P	1F
61906	CONTROL BOX 2,5HP 220V 1F 4"	4	220	60	2,5	2P	1F
61889	CONTROL BOX 1HP 220V 1F 4"	4	220	60	1	2P	1F
61890	CONTROL BOX 1,5HP 220V 1F 4"	4	220	60	1,5	2P	1F
61891	CONTROL BOX 2HP 220V 1F 4"	4	220	60	2	2P	1F
61892	CONTROL BOX 3HP 220V 1F 4"	4	220	60	3	2P	1F
62266	CONTROL BOX 3.5HP 220V 1F 4"	4	220	60	3,5	2P	1F

[www.wdmpumps.com](http://www.wdmpumps.com)



■ [www.wdmpumps.com](http://www.wdmpumps.com)

VERSIÓN	1
FECHA	27/06/24